



# Together Activity

## Monitoring, Evaluation and Learning (MEL) Plan, Revision 2

# Monitoring, Evaluation and Learning (MEL) Plan, Revision 2

Activity Title:	Together
Sponsoring USAID Office:	USAID/RDMA
Cooperative Agreement:	72048618CA0008
Activity Start Date and End Date:	August 22, 2018 to August 21, 2022
Agreement Officer's Representative:	Ms. Potjamarn Bunkraisri
Recipient:	DAI Global, LLC
Date of Publication:	19 January 2021

# CONTENTS

- 1. Introduction ..... 1**
  - PURPOSE..... 1
  - THE *TOGETHER* VISION ..... 1
  - CONTEXT ..... 1
  - DEVELOPMENT HYPOTHESIS..... 2
  - GOAL AND OBJECTIVES..... 2
  - Figure 1. Together Results Framework*..... 3
  - GEOGRAPHIC FOCUS..... 4
- 2. Theory of Change and Logic Model..... 4**
  - Table 1. Together Theories of Change and Logic Model*..... 5
- 3. Learning Plan and Learning Questions ..... 6**
  - Table 2. Together Learning Questions and Activities* ..... 6
- 4. Activity Monitoring & Evaluation and Collaborating, Learning & Adapting Plans..... 7**
  - MEL STRUCTURES, FUNCTIONS, AND CAPABILITIES..... 7
  - Figure 2. MEL Structure* ..... 8
  - MONITORING DATA QUALITY AND FLOW..... 8
  - DATA USE AND REPORTING ..... 9
  - DATA-DRIVEN MONITORING ..... 9
  - DATA QUALITY ASSURANCE (DQA) ..... 10
  - SPECIAL STUDIES..... 13
  - CONTEXT MONITORING ..... 15
  - LEARNING AND ADAPTING PLAN ..... 15
- 5. MEL Activity Schedule..... 15**
  - Table 3. Together MEL Activity Plan, 22 August 2018 to 21 August 2022* ..... 16
- 6. Appendix ..... 18**
  - APPENDIX 1: OBJECTIVE – INDICATOR TABLE ..... 19
  - APPENDIX 2: INDICATOR TRACKING TABLE ..... 20
  - APPENDIX 3: INDICATOR REFERENCE SHEETS ..... 23
  - APPENDIX 4: PERCEPTION SURVEY -- COMPOUND VARIABLE BASELINE VALUES ..... 76

## **ABBREVIATIONS**

AOR	Agreement Officer's Representative
CAP	Complex-Aware Planning
CLA	Collaboration, Learning and Adaptation
COP	Chief of Party
CGDCR	Community Governance and Drivers of Conflict Research (Project)
CSO	Civil Society Organization
DCOP	Deputy Chief of Party
DQA	Data Quality Assessment
GESI	Gender Equality and Social Inclusion (Analysis)
GSI	Governance and Social Inclusion (Interviews)
KAP	Knowledge, Attitude and Practice (Survey)
M&A	Monitoring and Assessment
MEL	Monitoring, Evaluation and Learning (Plan; Manager)
PDO	Program Development Officer
RTG	Royal Thai Government
SBPAC	Southern Border Provinces Administration Center
SOW	Scope of Work
SPM	Senior Program Manager
TAMIS	Technical and Administrative Management Information System
USAID	United States Agency for International Development

# I. INTRODUCTION

## PURPOSE

This document is a revision of the Monitoring, Evaluation and Learning (MEL) Plan approved by USAID on 19 February 2019. Following recommendations from the USAID DQA conducted in September to October 2020, it updates various sections of the Plan and presents revised indicator descriptions and targets that *Together* will use to gauge progress over the life of the Activity. The MEL plan is a living document. *Together* staff will review the Plan annually and revise it as needed to ensure it remains relevant to the work environment and any changes in Activity strategy, and useful to staff and stakeholders in measuring achievements. Any changes to the MEL Plan will be presented to USAID for review and approval prior to their application.

This revised MEL Plan presents monitoring, evaluation and learning strategies, systems and tools that *Together* will use to facilitate tracking of progress against objectives during implementation. The Plan encourages a gender and social inclusion-sensitive approach with data disaggregated by sex, geographic area, and marginalized and other groups when possible and as relevant to *Together*. This MEL Plan utilizes DAI's complex adaptive systems approach to monitoring the evolving dynamics in the work environment, which will enable *Together* to more easily identify and leverage entry points, use evidence to inform programming and implementation and collect and analyze data to facilitate the making of decisions.

The foundations of MEL plan are the *Together* Theories of Change and Results Framework. The Result Framework defines what *Together* plans to achieve at the objective and associated outputs levels. Learning questions and activities ensure that *Together* reflects on its work and makes better, more informed decisions at key points in the Activity which, in turn, help *Together* to achieve results more effectively and efficiently.

## THE TOGETHER VISION

*Together's* vision for the end of the Activity is that Thai citizens across the nation, but especially in the Deep South, will have deeper, more meaningful and peaceful dialogue with each other and with government, leading to actions that address citizens' needs and grievances. The improved ability of government to listen to, understand and communicate with citizens—especially women, youth, and minorities—and act to address their concerns will reduce socio-political acrimony. Civil society organizations (CSOs) will collaborate more effectively to pull together the voices of citizens, advocate for the public interest, and work with government to develop effective solutions to common problems. Given sufficient space for dialogue, reconciliation and change in attitudes and inequalities, Thai citizens and institutions will have the skills, networks, and mechanisms to promote peace, tolerance and good governance.

## CONTEXT

The development challenges in Thailand are complex, stemming from a fluid political environment, the deep and long-standing tensions emanating from ethnic, religious, and rural/urban differences, and a limited number of effective mechanisms to facilitate government-citizen dialogue. The following are some of the key challenges and opportunities for *Together* programming.

### *Complex and evolving drivers of conflict.*

The complex, evolving, and inter-related issues and factors that drive conflict in Thailand—political, socio-economic, and cultural—require rigorous and constant monitoring and analysis. These are not new and have persisted because of neglect and inconsistent and inadequate approaches to addressing them. Successive governments have tried to prevent these issues and related grievances from tipping over in to widespread violence, but unintended consequences of their actions include frustrated and impatient citizens and rising tensions in many locales. *Together* can play an important role in examining assumed drivers of conflict, identifying those that most exacerbate conflict and designing innovative activities to bridge divides and mitigate conflict.

### *Identity and social exclusion.*

The lingering contestation over identity gives rise to feelings of exclusion and supports a vulnerability to escalating conflict and violence. Thailand has long promoted a Thai identity that many feel is not inclusive of the diversity of the nation and does not allow for the full participation of all Thai citizens. Malay Muslims must learn the Thai language and customs in school and are afraid of losing their culture and identity. Religious and cultural divides exist. Strict cultural and religious norms limit the ability of Buddhist and Muslim women to participate in the full range of economic and political opportunities.

### *Marginalization and social engagement.*

The CGDCR Project revealed that feelings of individual discrimination were not correlated with more support for destructive or violent actions and extreme ideas showing that extremism is not a problem of isolated individuals. On the other hand, support for such actions and ideas is strong for those who interpret discrimination as being directed at their community. Being socially connected to one's community, conscious of the marginalization and discrimination that one's community faces, makes one more likely to support using violence in defense of one's community. *Together* will work with appropriate leaders and networks that communities already see as legitimate and encourage positive social interaction to address grievances the give rise to feelings of marginalization. Programming will be designed to ensure that community members receive incentives and rewards similar to, but in place of those offered by groups that support extreme ideologies and destructive actions as a pathway to achieve their objectives.

## **DEVELOPMENT HYPOTHESIS**

The *Together* development hypothesis is: as a result of *Together* activities, government institutions will have improved mechanisms for seeking citizen feedback and responding to citizens' needs. CSOs will have the skills to communicate with the public and effectively advocate to the government for the public interest, particularly for under-represented groups. And, CSOs and communities will have better critical thinking and conflict mitigation skills to constructively engage with each other and work together to resolve socio-political issues.

## **GOAL AND OBJECTIVES**

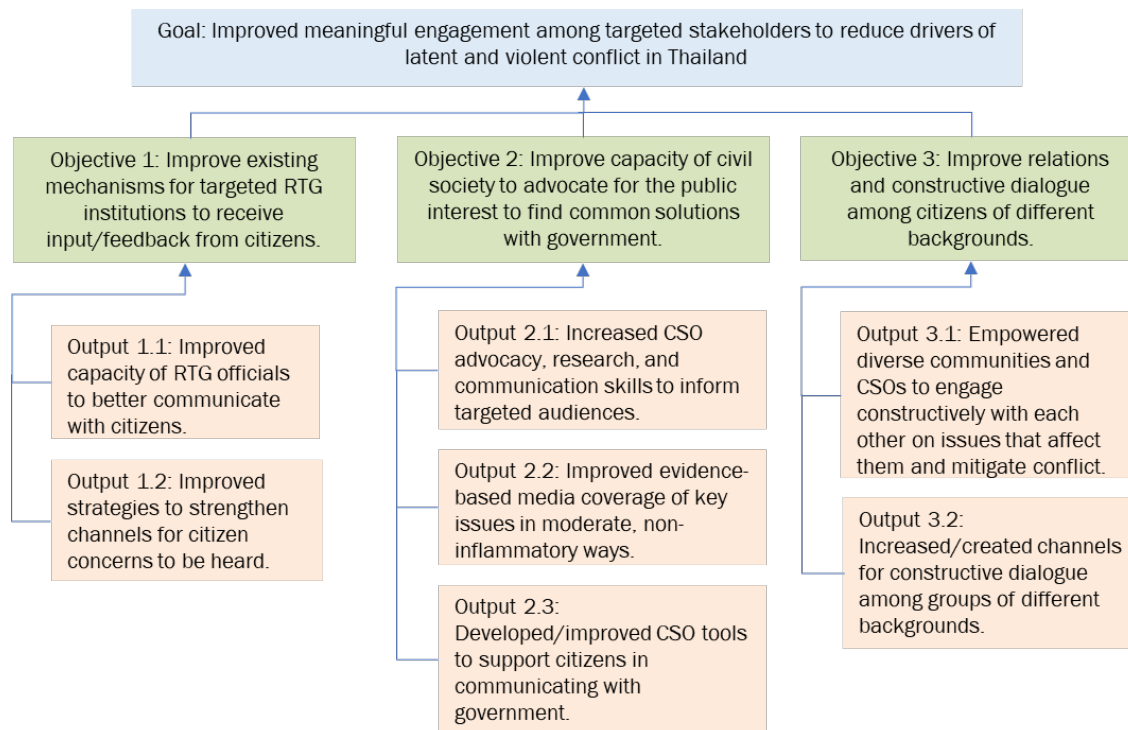
The *Together* goal is to improve meaningful engagement among targeted stakeholders to reduce drivers of latent and violent conflict in Thailand. To achieve this, *Together* supports CSOs and the RTG to deepen

constructive dialogue between citizens and government, leading to actions that address citizens' priorities and grievances and reduce drivers of conflict. *Together* works closely with government to strengthen its capacity to listen to, understand and communicate with citizens, thus increasing the RTG's ability to address issues of concern to citizens and strengthen social inclusion and cohesion. At the same time, *Together* collaborates with CSOs to improve their capacity to advocate for public interests and work with government to develop effective solutions to common problems. Through its partnerships and activities, *Together* expands the space for dialogue and reconciliation, and facilitates the growth of attitudes, networks and mechanisms that nurture peace, tolerance and just governance.

The *Together* framework includes three objectives:

- Improve existing mechanisms for RTG institutions to receive input and feedback from citizens;
- Improve capacity of civil society to advocate for the public interest to find common solutions with government; and
- Improve relations and constructive dialogue among citizens of different backgrounds.

**FIGURE I. TOGETHER RESULTS FRAMEWORK**



**GEOGRAPHIC FOCUS**

The *Together* geographic area of focus presently comprises seven provinces in the North, Northeast and Deep South (subject to change as the Activity progresses):

Deep South	Northeast	North
Pattani	Khon Kaen	Chiang Mai
Yala	Kalasin	Lampang
Narathiwat		

During the period July to November 2019, *Together* conducted an assessment of government mechanisms and agencies employing them to clarify mechanisms that might best address select drivers of latent and violent conflict and critical issues (grievances) that support underlying vulnerabilities to conflict in each focus area. In highlighting effective government mechanisms, including the geographic locations where they operate best, assessment findings guided *Together* in narrowing the number of provinces in the North and Northeast where it might focus programming.

Criteria for selecting mechanisms include:

- Successful in soliciting and using citizen input and feedback, with focus on geographic areas (e.g., Deep South) and demographic groups (e.g., women, youth, marginalized groups) of interest to *Together*;
- Institutionalized – have dedicated staff, budget, and policies;
- Replicable – could be expanded to other locales;
- Engage with external partners, such as CSOs; and
- “Big enough” to have meaning and impact on local issues and underlying vulnerabilities to conflict.

As mechanisms are associated closely with the RTG agencies implementing them, selecting focus mechanisms implies selecting government partners as well. Criteria for selecting RTG partner ministries or agencies include:

- Employ citizen feedback mechanisms that match *Together* criteria (above);
- Interested to learn and lead, are motivated and have the will to strengthen their citizen feedback mechanisms;
- Interested to engage with other government agencies, universities and CSOs; and
- Interested to share experiences with other organizations.

**2. THEORY OF CHANGE AND LOGIC MODEL**

*Together* has three interrelated and mutually reinforcing objectives, which aim to contribute to the ultimate goal of “Improved meaningful engagement among targeted stakeholders to reduce drivers of latent and violent conflict in Thailand.” A Theory of Change underpins each *Together* objective, its associated outputs, and illustrative indicators (see Table 1).



**TABLE I. TOGETHER THEORIES OF CHANGE AND LOGIC MODEL**

<b>Goal: Improved meaningful engagement among targeted stakeholders to reduce drivers of latent and violent conflict in Thailand</b>			
<b>Objectives</b>	<b>Theories of Change</b>	<b>Illustrative Outcome Indicators</b>	<b>Assumptions</b>
Obj 1. Improve existing mechanisms for targeted RTG institutions to receive input/feedback from citizens.	<i>If</i> government officials have better capacity, strategies, and tools to communicate with citizens, <i>then</i> government will be better informed and able to respond to citizen concerns, which will increase government’s legitimacy and reduce grievances.	Ind 1.1. Perception of “Consensus Orientation” in sample of focus community members. (disaggregate by sex).	<ul style="list-style-type: none"> <li>▪ National RTG agencies are willing or capable of partnering with <i>Together</i>.</li> <li>▪ Local RTG agencies and local governments support implementation and perceive that <i>Together</i> activities contribute to one of the national strategies to improve social equality and equity.</li> </ul>
		Ind 1.2. Perception of “Participation” in sample of focus community members (disaggregate by sex).	
Obj 2. Improve capacity of civil society to advocate for the public interest to find common solutions with government.	<i>If</i> universities, CSOs, and media can better use evidence, develop constructive arguments, and use effective governance tools to inform, aggregate, and represent citizen priorities, particularly those of marginalized groups, <i>then</i> the government will be more likely to engage and respond effectively to citizen demands.	Ind 2.1. CSO Advocacy Capacity Index (disaggregate by CSO).	<ul style="list-style-type: none"> <li>▪ CSOs take ownership of their capacity development process and demonstrate desired capacity increases.</li> <li>▪ Conducive environment for the work of civil society groups.</li> <li>▪ CSOs see new relationships with other CSOs and government agencies as an opportunity for collaboration.</li> </ul>
		Ind 2.2. (F) Number of persons trained with USG assistance to advance outcomes consistent with gender equality or female empowerment through their roles in public or private sector institutions or organizations (disaggregate by sex and age cohort).	
Obj 3. Improve relations and constructive dialogue among citizens of different backgrounds.	<i>If</i> different or conflicting groups can better understand and respect each other, develop skills and tools to resolve their difference constructively and work on issues of common concern together, <i>then</i> they will be able to resolve their differences non-violently.	Ind 3.1. Perception of “Community Marginalization and Discrimination” among sample of focus community members (disaggregate by sex).	<ul style="list-style-type: none"> <li>▪ Conducive political environment and groups are willing to work together.</li> <li>▪ Clear understanding of underlying drivers of conflict and able to properly address those drivers.</li> </ul>
		Ind 3.2. Perception of "Self-efficacy" among sample of focus community members (disaggregate sex).	
		Ind 3.3. Perception of "Sense of Belonging" among sample of focus community members (disaggregate sex).	
		Ind 3.4. Perception of "Responsibility for the Common Good" among sample of focus community members (disaggregate sex).	

### 3. LEARNING PLAN AND LEARNING QUESTIONS

Answers to *Together* learning questions and the results of associated activities will fill gaps in staff understanding of the work environment (context) and ensure that monitoring and assessment tasks provide high-quality, timely and relevant information to inform decision-making. Learning activities help *Together* monitor and assess the effectiveness of Activity implementation strategies and approaches, particularly regarding marginalized groups and whether *Together*-supported actions are giving voice and leading to sustainable solutions to their concerns.

TABLE 2. TOGETHER LEARNING QUESTIONS AND ACTIVITIES

Type	Learning Questions	Timing/Key Decision Points	Learning Activities	Resources
Technical Evidence Base	<ul style="list-style-type: none"> <li>How do different drivers of conflict and pathways to violence play out in the lives of men and women and between regions?</li> </ul>	At the beginning of the Activity	Mixed methods research to explore issues of governance, social inclusion and tension in focus geographic areas.	<i>Together</i> in collaboration with universities in each focus geographic area.
	<ul style="list-style-type: none"> <li>What are the topics, audiences, messaging and communication channels used by non-violent influencers to spread positive information and affect or change the way people behave?</li> </ul>	At the beginning of the Activity	Non-violent Influencers Assessment. This assessment includes desk research, interviews and focus group discussions with non-violent influencers and key stakeholders.	<i>Together</i> with support from universities in each focus geographic area.
	<ul style="list-style-type: none"> <li>What government-supported mechanisms are most effectively facilitating government-citizen dialogue and leading to actions to address underlying issues or factors associated with local tensions and conflicts?</li> </ul>	At the beginning of the Activity	Feedback Mechanism Assessment. This assessment includes a literature review, interviews and focus group discussions with constituents.	<i>Together</i> in collaboration with universities in each focus geographic area.
	<ul style="list-style-type: none"> <li>What are the differences between planned and actual Activity results, including intended and unintended consequences, and positive and negative impacts on men, women and identified marginalized groups?</li> <li>To what extent are stated Activity objectives and outputs being achieved? What are the challenges obstacles to greater achievement?</li> </ul>	Annually	Governance and Social Inclusion Interviews, including interviews with key informants and relevant stakeholders in focus areas.	<i>Together</i> in collaboration with universities in each focus geographic area
Monitoring and Assessment for Learning	<ul style="list-style-type: none"> <li>To what extent are <i>Together</i> interventions contributing to planned results?</li> <li>Have implementation challenges been uncovered and addressed quickly?</li> <li>Have successful activities been well-documented to facilitate replication?</li> </ul>	Annually	In-house evaluations of <i>Together</i> -funded activities, including interviews with relevant individuals and groups.	MEL Manager leads assessment of progress toward achievement of results.

## 4. ACTIVITY MONITORING & EVALUATION AND COLLABORATING, LEARNING & ADAPTING PLANS

### MEL STRUCTURES, FUNCTIONS, AND CAPABILITIES

The *Together* MEL Manager provides leadership in conducting monitoring and assessment (M&A) tasks. M&A tasks are designed to channel important information quickly to managers and technical experts. The focus is not on lengthy reports or on meetings to cover details of every activity but rather the flow of information to management and technical experts who can address issues as they arise. With *Together's* Program Development Officers (PDOs) and partners, the MEL Manager assesses progress toward achievement of overall Activity objectives and approved output and outcome targets. *Together* collects information on indicators on a regular basis through periodic research and assessments, site visits, focus group discussions and interviews with civil society leaders, government officials and university representatives and other stakeholders in the focus areas of operation. Input from a variety of information sources will help generate a realistic impression of the impact of *Together* activities.

All individual-level monitoring data will be disaggregated by sex and age-cohort (persons age 20-29 years, and persons age 30 and older). In addition, based on the Gender Equality and Social Inclusion (GESI) analysis and other foundation research, *Together* has developed performance indicators that will facilitate the measurement of change during the implementation period in key factors driving conflict and variables that indicate the strength of local governance and social inclusion in focus areas. Monitoring efforts will seek to uncover and document unintended gender-related consequences of *Together* actions, and, if needed, address them.

Core elements of the M&A tasks include:

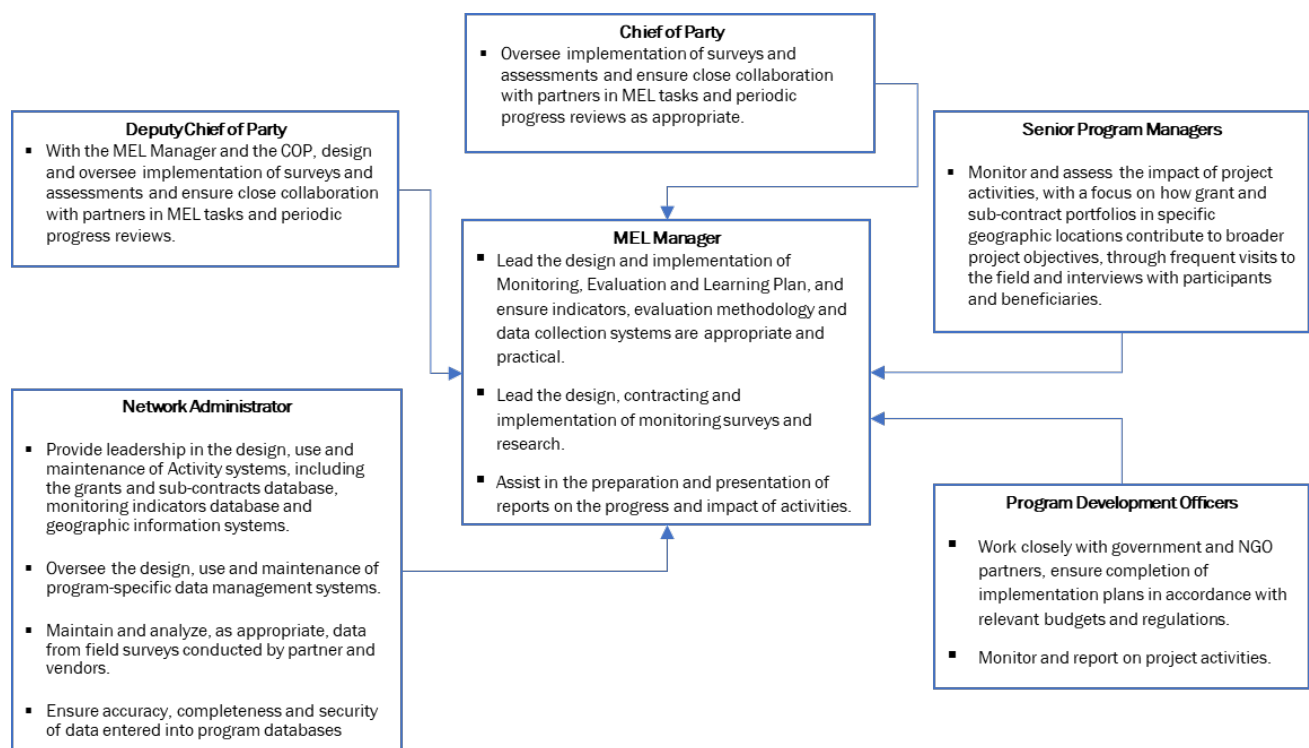
- Regular field visits—with a representative sample of stakeholders, conduct interviews and collect data as appropriate;
- Immediately after field visits, key staff will meet to discuss findings, determine lessons learned and how they might be incorporated into new activities, and discuss implications for existing strategies, policies and procedures;
- Regular collection of quantitative data for all *Together*-funded activities;
- Storage of quantitative data in the *Together* database (the Technical and Administrative Management Information System, or TAMIS) for analysis and documentation;
- Documentation of key lessons learned; and
- Reports written, as necessary.

With the *Together* Chief of Party (COP) and Deputy Chief of Party (DCOP), the MEL Manager designs and oversees implementation of surveys and assessments as defined in the MEL plan. With the DCOP, the MEL Manager is responsible for implementing the learning plan and for reporting results to the *Together* COP and other senior staff. The learning plan encourages analysis that will improve Activity approaches and activities. It facilitates and encourages a cycle of learning that builds staff knowledge and understanding of the outcomes of their activities and uncovers information and reveals alternatives which facilitate

making better decisions. Simply stated, the system facilitates learning about what *Together* is doing—opportunities seized, problems encountered, solutions applied and outcomes achieved—and encourages quick application of lessons learned.

Progress and outcome assessments help illuminate the success of an initiative in relation to its objectives, and the extent to which intended beneficiaries have benefited. They also provide a check on the use of *Together* resources. By encouraging reflection and observation, assessments help staff maintain focus on the larger objectives—the “big picture.”

**FIGURE 2. MEL STRUCTURE**



## MONITORING DATA QUALITY AND FLOW

*Together* will collect information on all indicators on a regular basis during Activity implementation. Sources of information include research and assessments, survey reports and associated data, grant and subcontract agreements, interim and final activity reports, visits to project sites, and interviews and focus group discussions with local and national government officials, civil society leaders and other Activity stakeholders.

When collecting information on outcomes, *Together* staff will gather perspectives and triangulate input from a variety of sources. This generates a realistic impression of the positive and negative outcomes of *Together* activities.

## **DATA USE AND REPORTING**

To encourage the analysis and discussion of monitoring data, *Together* will hold meetings following significant field assessments to discuss findings and lessons learned and how they might be incorporated into new activities, and any implications for existing strategies and policies. Such discussions will be the main forum for analysis and interpretation of activity outcomes.

*Together's* MEL databases will ensure that information is properly catalogued and easily accessible to management and technical experts. This facilitates decisions on technical direction and allocation of resources and enables accurate and timely responses to regular and ad-hoc USAID reporting requirements. It will also facilitate institutional and individual learning throughout the life of the Activity. While periodic reports and success stories will be delivered to USAID that present the "*Together* story," quarterly and annual reports will be the main formats for presenting performance information. Findings will be presented in a clear and concise manner, with appropriate tables and charts integrated into the narrative. Reports will be user friendly and encourage interest in *Together's* performance. In quarterly and annual reports, *Together* will arrange, order and present data in a variety of graphic formats, including tables, bar charts, and line charts, as appropriate.

Inevitably, MEL assessments will uncover unexpected and unintended poor results. As the focus of *Together* MEL assessments is on learning and applications of lessons learned, discovering challenges and problems is a positive event that can lead to and facilitate corrective action. Sub-par performance data will be addressed in narrative comments describing actions taken or planned to address problems identified. The results of corrective actions will be presented in quarterly and annual reports.

## **DATA-DRIVEN MONITORING**

### *Community Governance and Drivers of Conflict Research (CGDCR) Project*

Reliable benchmarking and comparative data analysis help *Together* measure progress and prioritize activities. Starting in November 2018, *Together* collaborated with five universities to implement the mixed methods CGDCR Project to explore issues of governance, social inclusion and conflict in the North, Northeast and Deep South regions of Thailand. The objective of this research was to provide a better and more nuanced understanding of community governance, drivers of conflict and the pathways through which individuals become vulnerable to and involved with destructive or violent actions. The specific outputs of the research project included:

- Identified and tested assumptions regarding the drivers of conflict.
- Deeper understanding of key factors related to governance and social inclusion.
- Clarity on risk factors for destructive and violent actions and of geographic areas and demographic groups that are most vulnerable to being influenced to commit extreme act.

- An understanding of messages used to build support and influence people to commit extreme acts, and the channels of communication that they use.

The research project employed a mixed-methods, iterative approach to achieve these outputs (details are presented in the research background note in the Appendix).

The quantitative perceptions survey component of the research project conducted in March-April 2019 provided baseline indicator data. The survey will be repeated at about the mid-point of *Together* in June-July 2020 and toward the end of the Activity in May-June 2022 after the completion of programming, providing data that can be used to compare progress against the baseline. If possible, the survey will be implemented both in *Together* focus areas and in a control group of non-focus areas to allow *Together* to discern the extent of Activity impact in the focus areas (subject to the availability of time and funds).

#### *Governance and Social Inclusion (GSI) Interviews.*

To complement the quantitative perceptions survey, *Together* will conduct a series of GSI interviews with a cross-section of people involved with *Together* activities in focus areas (e.g. local officials, civil society representatives, youth and women). These interviews will explore issues of governance and social inclusion with key individuals who are uniquely placed to understand community challenges and witness the impacts of *Together* programming. The interviews will provide insight into how and why changes take place in focus areas in response to *Together* programming. To encourage learning and facilitate assessment of the effectiveness of programming strategy, these interviews will be conducted as a baseline once *Together* focus areas identified in September 2019, and at the mid- and end-points of *Together*.

#### *Knowledge, Attitude and Practice (KAP) Surveys.*

*Together* will also conduct KAP surveys on constituent perceptions of partner CSOs to advocate for citizen needs and address their grievances. Surveys will comprise periodic structured interviews with selected CSOs and relevant stakeholders on the activities, perceptions and opinions of the CSO.

## **DATA QUALITY ASSURANCE (DQA)**

The *Together* MEL Manager leads the regular assessment of the overall quality of Activity monitoring data, including quarterly internal DQA. Assessment themes and associated tasks are presented below.

### *Validity*

*Together* self-implemented activities, grant awards and sub-contracts include information on the connections between proposed activities and *Together* objectives and intermediate results. They also include statements on specific links between activity outputs/outcomes and Activity indicators. These statements are reviewed by the DCOP and/or MEL Manager for clarity and accuracy prior to approval.

---

### ***Ensuring equity in Program activities***

---

*Together's* M&A tasks facilitates the flow of information on activities—including data on the sex and diversity of beneficiaries—to managers and technical experts.

Monitoring and analyzing sex and diversity disaggregated data helps staff understand the differences in access to and control of Activity resources, and participation in decision-making processes among a diverse group of beneficiaries.

The data also highlight opportunities for reducing inequalities and discrimination, and promoting more equal relations between groups. As a result, *Together* will be able to adjust strategies and plans to ensure they address the needs and interests of all intended beneficiaries.

---

These measures help ensure a clear and direct relationship between activities and what *Together* must measure and achieve. As deficiencies are exposed, the MEL Manager will correct them, including consultations with and training of staff as needed. The MEL Manager will document the deficiencies and responses, including descriptions of issues involved, dates of actions and persons involved, in the MEL database.

The MEL Manager will ensure that staff and partners responsible for collecting data are qualified and properly supervised as they go about their work. Qualification for collecting data for indicators at the expected results (output) level starts with thorough knowledge of indicators and information to be collected, and of the associated activities that are being implemented with *Together* support. The Senior Program Managers (SPMs) and PDOs are responsible for collecting data at the expected results level (output indicators). These indicators are quite simple – numbers of CSOs or government agencies assisted, persons trained, events held. Discussions were held early in the Activity and continue regularly during implementation to ensure the SPMs and PDOs understand the definitions of these indicators. Data collection forms are created as necessary, and the SPMs and PDOs are trained in their use (e.g., participant name lists and event reports). The SPMs and PDOs will collect and enter data into the Activity database. The SPMs will review data forms and their contents as they are submitted. The MEL Manager also reviews this information at least quarterly. When questions arise, the MEL Manager will consult with the DCOP for clarification.

The MEL Manager will work with the SPMs to correct data errors as they are found. Known "source" data errors are corrected by contacting partner organizations and asking them to review their records and provide revised reports. Data entry errors are corrected by re-entering information into the database.

All *Together* grant awards and subcontracts have scopes of work (SOW) that clearly present milestones or deliverables for the activities contained in the award/subcontract. These include collection and documentation of output indicator data on appropriate forms. PDOs will take the lead in developing SOWs with partners, and thus will be fully aware of the critical data to be collected during Activity implementation (again, with the SPMs supervising the process).

The SPMs will be trained to know and understand the data *Together* requires, the definitions of the data, and how outputs will be derived from individual activities. The MEL Manager and DCOP will monitor the quality and completeness of data in the database and are available to provide clarifications when necessary.

Qualification for collecting data for indicators at the objective (outcome) level starts with thorough knowledge of the indicator and information to be collected, and of the associated Activity objectives. The MEL Manager and the SPMs, supported by the DCOP, are responsible for collecting data at the objective level (outcome indicators). They will have a clear understanding of the objectives of the Activity, having taken part in strategy meetings and annual work plan design sessions. These sessions included discussion of the overall Activity framework and vision, and on methods *Together* will use to determine success of the overall Activity in achieving its objectives.

The PDOs will also have clear understanding of the outcome indicators and associated information to be collected as they participate in annual reviews. The MEL Plan design and subsequent review processes utilized the SPMs and PDOs experiences in MEL in other locations with similar program objectives.

When data problems arise, the MEL Manager will document and present them in appropriate reports for USAID and the data collection system adjusted accordingly.

### *Reliability*

*Together* follows a consistent and standard process for data collection regardless of the timing or location of data collection efforts. At all times, data will be collected on standard forms used by all partners and signed by individual(s) involved (by person participating in training event, and/or person collecting data). Data collected on standard forms will be reviewed in the Activity database by the SPMs and the MEL Manager. When possible, these same staff will cross-check data collected across forms used for varied purposes (e.g., registration list and travel allowance receipts for training events).

On a quarterly basis, the MEL Manager will audit monitoring data collected in the current and previous periods to verify the reliability of all monitoring data. At this time, as necessary, they may also conduct a close review of a sample of data by communicating with partners on specific data collected through them, by matching paper forms with data entered into the database and by review of the data in other various forms.

As problems and challenges are revealed, the MEL Manager will create a list of all issues to be resolved. This list is shared with relevant staff, with instructions on actions to take to address each issue. As issues are addressed, the MEL Manager will mark the relevant issue as “resolved.” The quarterly audit is deemed complete when all items on the checklist have been addressed satisfactorily. The MEL Manager stores the list of audit issues and associated actions taken in the Activity Database. As necessary and appropriate, data problems are communicated to USAID in regular Activity reports.

### *Timeliness*

All *Together* staff members will collect data on a regular basis to support Activity management needs. Activity output data are collected as events occur, reviewed as events are completed and entered into the database within 10 days of the end of each activity, grant award and subcontract. The *Together* Activity database is user-friendly, facilitating easy entry of data by staff and, as it is an open internal database, the data can be viewed by all staff soon after entry. *Together* will submit MEL data to USAID in quarterly and annual reports, and in quarterly TEAMS submissions

### *Precision*

*Together* limits transcription errors by authorizing only persons knowledgeable of the indicators and activities to enter information into the database (e.g., SPMs and PDOs). All data are reviewed for missing and inaccurate information by the MEL Manager.

The Activity database allows for viewing of data in different formats, thus facilitating detection of duplicate and missing data. Data can also be sorted by various criteria to highlight duplicate or missing data (e.g., sorting participant data by last name to highlight multiple entries of individuals in one training course, or to reveal gaps in data entry in any field(s)).



## *Integrity*

TAMIS is a proprietary data management system customized specifically for *Together* and is the repository for all Activity data. All *Together* staff use TAMIS daily for a wide range of tasks, from seeking approval for travel to tracking grant finances and managing award deliverables. It is where monitoring data reside, facilitating the linking of grant and subcontract results to *Together* custom output and outcome indicators. All staff have complete access to TAMIS, enabling them to view important documents, assess Activity progress and make programming and resource allocation decisions. TAMIS features full integration of USAID data standards, including data tracking against the U.S. Foreign Assistance Framework.

The integrity of the *Together* Activity database is maintained by limiting access to the database to only authorized staff members who have responsibility for entering information in the database. The Activity database is safeguarded by password to prevent unauthorized individuals from viewing the dataset. For those authorized to view the dataset, further authorization is required to enter and change data. Only the COP, DCOP and MEL Manager have authority to delete data. Hard copies of data – primarily data capture forms – will be maintained as required in associated grant and project activity files (to ensure compliance in documenting completion of deliverables). Only the COP, DCOP, MEL Manager and Grants Managers will have access to these files. To maintain confidentiality of respondents, all research survey data will be maintained by the DCOP and only the COP and DCOP will have access to these files. (All data on hard copy files resides in the *Together* electronic database).

## **SPECIAL STUDIES**

### *Gender Equality and Social Inclusion Analysis*

At the outset of the Activity, *Together* conducted a GESI Analysis to provide fresh insights and information that senior managers can use to adjust and refine the Activity approach and to ensure that all activities are sensitive and responsive to the needs of men and women and traditionally excluded groups. The GESI Analysis represents a critical foundational exercise that will provide a nuanced understanding of the priority gender and social inclusion issues. It is part of the comprehensive *Together* start-up research initiative that provides a firm foundation for discussions on the overall Activity programming strategy and initial activities, and baseline data that may be used to assess Activity outcomes.

The specific objectives of the GESI Analysis included:

- Inform the design of the overall *Together* approach, strategy and activities, including the MEL framework, by providing an overview of the context for women and vulnerable groups as it relates to engagement, advocacy and dialogue;
- Identify opportunities for addressing gender equality and social inclusion issues that *Together* will explore in its interventions; and
- Raise questions and define issues that *Together* can investigate more deeply in other planned Activity research efforts.

The GESI Analysis addressed the following key questions:

- What are the issues that civil society organizations are mobilizing on?
- In what ways are organizations and citizens involved in engagement, advocacy and dialogue initiatives?

- To what extent are engagement and advocacy initiatives informed by evidence?
- What are the barriers to women and vulnerable groups' participation in engagement and advocacy initiatives?
- What are the challenges facing civil society in mobilizing and advocating for women and vulnerable groups?
- What are the opportunities for increasing the voice and participation of women and vulnerable groups and their organizations at the community and national level?

#### *Non-violent Influencers Assessment*

To learn and understand more about the communication practices of non-violent influencers in *Activity* focus areas, *Together*, with support from university partners, will use a combination of desk research and qualitative methods to identify non-violent influencers and analyze their narratives and messaging. The assessment will also identify opportunities to improve or expand communication of moderate and non-inflammatory messaging, and ways in which non-violent influencers might facilitate citizen engagement, advocacy and constructive dialogue in their communities. In the context of this assessment, non-violent influencer implies those persons who spread information or messages to specific groups to affect or change the way that people behave in a positive manner. Influencers who use, incite or encourage violence are not included in this assessment. *Together* will use assessment results to inform the design of *Activity* interventions and as baseline data that may be used to assess *Activity* outcomes.

#### *Feedback Mechanism Assessment*

To better understand the processes and practices used by the RTG to solicit, collect and utilize information from citizens, and how these might address drivers of conflict and associated underlying vulnerabilities, *Together* will conduct an assessment government feedback mechanisms. The assessment will identify effective mechanisms currently in use and reform-minded government institutions most willing to work with *Together*, as well as convergences between government functions and citizen needs. The assessment includes entry-point mapping that will help identify specific institutional mechanisms at the national and local levels where CSOs and citizens can engage with government counterparts. The specific outputs of the assessment include:

- Identification of mechanisms that receive citizen input and feedback with the intention of improving public service delivery and government decision-making;
- Mapping of processes through which input/feedback are collected, analyzed and utilized to improve service delivery or government decision-making;
- Uncover incentives and motivations of RTG agencies and officials to utilize input/feedback to improve service delivery or government decision-making; and
- Recommendations for priority entry points, geographic locations and potential government partners for *Together* programming to improve meaningful engagement between citizens and government.

## CONTEXT MONITORING

*Together* uses Complex-Aware Planning (CAP), an innovative methodology for monitoring changes and unintended outcomes that result from implementation of activities in complex environments where cause and effect are not easily understood. Through regular contextual analysis, monitoring and assessments of programmatic feedback data, CAP provides information on impacts and outcomes that help staff understand more quickly where *Together* is having an impact than might come from a more traditional monitoring and evaluation approach. *Together* uses CAP to foster rigorous analysis within the Activity team; among CSO, university, and RTG partners; and in communities about how *Together* might best address latent tension and conflict and bridge divides. The CAP approach includes interviews, small group discussions and workshops with CSOs, university partners, RTG partners and citizens.

Described above, the GSI Interviews will also include discussion of changes in the work environment and associated impacts on implementation of activities and programming outcomes.

## LEARNING AND ADAPTING PLAN

*Together* will employ a field-tested Activity Cycle—used on conflict mitigation programs worldwide—to seize windows of opportunity and build trust and increase engagement through quick-response, high-impact activities typically implemented through in-kind grants to local partners. Framed in collaboration, learning, and adaptation (CLA), the Activity Cycle begins with collaborative idea generation and moves into participatory activity development with a focus on learning and adapting from earlier activities. Activity implementation relies on an equal partnership among partners and continual monitoring of progress, with an eye toward adaptation as needed. Once an activity is completed, *Together* will apply the CAP methodology to evaluate it to inform future programming, thereby starting new activity cycles.

In addition, *Together* will hold periodic meetings with partners to reflect on recent experiences, review monitoring data and discuss how to improve strategies and associated project activities. These meetings include:

- Twice annual meetings (or, at the end of significant activities) with CSO and University partners, to encourage formal review of planned versus actual project outputs and emerging outcomes, and adjust strategies and approaches accordingly; and
- Annual work plan design meetings with partners that will include collaborative reflection on past activities and associated outcomes and use of project assessment, research findings and learning questions to improve the design of subsequent year activities.

Finally, *Together* will conduct annual reviews of the MEL Plan, indicators and targets to ensure they remain relevant and appropriate to the work environment and planned activities.

## 5. MEL ACTIVITY SCHEDULE

Core *Together* MEL activities are presented in Table 3, below.





## 6. APPENDIX

## APPENDIX I

### Together Monitoring, Evaluation and Learning Plan -- Objective-Indicator Table

7-May-20

No.	Type	Together ID	Indicator Name	Link with Together Objective
1	FA Output PS.6.2-2	41 (cross-cutting)	Number of USG-funded events, trainings, or activities designed to build support for peace or reconciliation on a mass scale	Primary: 1, 2, 3 Secondary: none
2	FA Output PS.6.2-4	42 (cross-cutting)	Number of people participating in USG-supported events, trainings, or activities designed to build mass support for peace and reconciliation	Primary: 1, 2, 3 Secondary: none
3	FA Output GNDR-8	22	Number of persons trained with USG assistance to advance outcomes consistent with gender equality or female empowerment through their roles in public or private sector institutions or organizations	Primary: 1, 2 Secondary: none
4	FA Output YOUTH-1	43 (cross-cutting)	Number of youth trained in soft skills/life skills through USG assisted programs	Primary: 1, 2 Secondary: none
5	Outcome	11	Perception of "Consensus Orientation" in sample of focus community members	Primary: 1 Secondary: 2, 3
6	Outcome	12	Perception of "Participation" in sample of focus community members	Primary: 1 Secondary: 2, 3
7	Outcome	21	CSO Advocacy Capacity Index	Primary: 2 Secondary: none
8	Outcome	31	Perception of "Community Marginalization and Discrimination" in sample of focus community members	Primary: 3 Secondary: 1, 2
9	Outcome	32	Perception of "Self-efficacy" among sample of focus community members	Primary: 3 Secondary: 1, 2
10	Outcome	33	Perception of "Sense of Belonging" among sample of focus community members	Primary: 3 Secondary: 1, 2
11	Outcome	34	Perception of "Responsibility for the Common Good" among sample of focus community members	Primary: 3 Secondary: 1, 2

## APPENDIX 2

**Together Monitoring, Evaluation and Learning Plan -- Indicator Tracking Table**

19-Jan-21

No.	Type	Together ID	Indicator Name	Unit of Measure	Disaggregated by	Data Source	Method of Collection
1	FA Output PS.6.2-2	41 (cross-cutting)	Number of USG-funded events, trainings, or activities designed to build support for peace or reconciliation on a mass scale	Event	None	Self-implemented SOW, Grant Award, Sub-contract documents	Staff write or collect event reports from partners, upload in TAMIS
2	FA Output PS.6.2-4	42 (cross-cutting)	Number of people participating in USG-supported events, trainings, or activities designed to build mass support for peace and reconciliation	Person	Sex (male and female)	Event report, participant attendance sheet	Staff write or collect event reports from partners, upload in TAMIS. For large public events, number of participants estimated by head count.
3	FA Output GNDR-8	22	Number of persons trained with USG assistance to advance outcomes consistent with gender equality or female empowerment through their roles in public or private sector institutions or organizations	Person	Sex (male and female)	Event report, participant attendance sheet	Staff write or collect event reports from partners, upload in TAMIS
4	FA Output YOUTH-1	43 (cross-cutting)	Number of youth trained in soft skills/life skills through USG assisted programs	Person	Sex (male and female); cohort (age 20-24; 25-29); and province	Event report, participant attendance sheet	Staff write or collect event reports from partners, upload in TAMIS
5	Outcome	11	Perception of "Consensus Orientation" in sample of focus community members	Compound variable	Province	Individual perception survey	Survey using standard approach and tools
6	Outcome	12	Perception of "Participation" in sample of focus community members	Compound variable	Province	Individual perception survey	Survey using standard approach and tools
7	Outcome	21	CSO Advocacy Capacity Index	Compound variable	None	Advocacy Capacity Assessment. CSO staff and relevant stakeholders	Structured interviews using standard approach, scoring method and tools
8	Outcome	31	Perception of "Community Marginalization and Discrimination" in sample of focus community members	Compound variable	Province	Individual perception survey	Survey using standard approach and tools



**Together Monitoring, Evaluation and Learning Plan -- Indicator Tracking Table**

19-Jan-21

No.	Type	Together ID	Indicator Name	Unit of Measure	Disaggregated by	Data Source	Method of Collection
9	Outcome	32	Perception of "Self-efficacy" among sample of focus community members	Compound variable	Province	Individual perception survey	Survey using standard approach and tools
10	Outcome	33	Perception of "Sense of Belonging" among sample of focus community members	Compound variable	Province	Individual perception survey	Survey using standard approach and tools
11	Outcome	34	Perception of "Responsibility for the Common Good" among sample of focus community members	Compound variable	Province	Individual perception survey	Survey using standard approach and tools

Together Monitoring, Evaluation and Learning Plan – Indicator Tracking Table

19-Jan-21		Baseline				Period 1 -- 22 Aug 2018-30 Sept 2019		Period 2 -- 1 Oct 2019-30 Sept 2020		Period 3 -- 1 Oct 2020-30 Sept 2021		Period 4 -- 1 Oct 2021-21 Aug 2022		Life of Activity	
No.	Type	Together ID	Indicator Name	Month-Year	Value	Target	Actual	Target	Actual [to 30Jun20]	Target	Actual	Target	Actual	Target	Actual
1	FA Output PS.6.2-2	41 (cross-cutting)	Number of USG-funded events, trainings, or activities designed to build support for peace or reconciliation on a mass scale	NA	NA	0	0	35	13	21		15		49	
2	FA Output PS.6.2-4	42 (cross-cutting)	Number of people participating in USG-supported events, trainings, or activities designed to build mass support for peace and reconciliation	NA	NA	0	0	611	122 M = 57 F = 65 Youth = 10	2,504		666		3,292	M = 1,646 F = 1,646
3	FA Output GNDR-8	22	Number of persons trained with USG assistance to advance outcomes consistent with gender equality or female empowerment through their roles in public or private sector institutions or organizations	NA	NA	0	0	146	47 M = 15 F = 32 Youth = 10	192		20		259	M = 129 F = 130
4	FA Output YOUTH-1	43 (cross-cutting)	Number of youth trained in soft skills/life skills through USG assisted programs	NA	NA	0	0	35	0 M = 0 F = 0	60		5		65	Age 20-24: 22; M=11; F=11 Age 25-29: 43; M=21; F=22
5	Outcome	11	Perception of "Consensus Orientation" in sample of focus community members	Apr-19	See Table: Custom Indicator Tracking Table	NA	NA	End-of-period value improved over baseline	See Table: Custom Indicator Tracking Table	NA		End-of-period value improved over period 2 value		End-of-Activity value improved over period 2 value	
6	Outcome	12	Perception of "Participation" in sample of focus community members	Apr-19	See Table: Custom Indicator Tracking Table	NA	NA	End-of-period value improved over baseline	See Table: Custom Indicator Tracking Table	NA		End-of-period value improved over period 2 value		End-of-Activity value improved over period 2 value	
7	Outcome	21	CSO Advocacy Capacity Index	Nov-20	TBD	NA	NA	NA	Data available in Y3Q1 (Baseline Values)	TBD Y3Q1		TBD		TBD	
8	Outcome	31	Perception of "Community Marginalization and Discrimination" in sample of focus community members	Apr-19	See Table: Custom Indicator Tracking Table	NA	NA	End-of-period value improved over baseline	See Table: Custom Indicator Tracking Table	NA		End-of-period value improved over period 2 value		End-of-Activity value improved over period 2 value	
9	Outcome	32	Perception of "Self-efficacy" among sample of focus community members	Apr-19	See Table: Custom Indicator Tracking Table	NA	NA	End-of-period value improved over baseline	See Table: Custom Indicator Tracking Table	NA		End-of-period value improved over period 2 value		End-of-Activity value improved over period 2 value	
10	Outcome	33	Perception of "Sense of Belonging" among sample of focus community members	Apr-19	See Table: Custom Indicator Tracking Table	NA	NA	End-of-period value improved over baseline	See Table: Custom Indicator Tracking Table	NA		End-of-period value improved over period 2 value		End-of-Activity value improved over period 2 value	
11	Outcome	34	Perception of "Responsibility for the Common Good" among sample of focus community members	Apr-19	See Table: Custom Indicator Tracking Table	NA	NA	End-of-period value improved over baseline	See Table: Custom Indicator Tracking Table	NA		End-of-period value improved over period 2 value		End-of-Activity value improved over period 2 value	

## APPENDIX 3

### Together Activity Indicator Reference Sheet

<b>Indicator No. &amp; Name:</b> PS.6.2-2: Number of USG-funded events, trainings, or activities designed to build support for peace or reconciliation on a mass scale (F indicator)
<b>DO No. &amp; Name:</b> DO 1: Regional Institutions' Ability to Promote Sustainable and Inclusive Regional Growth Increased
<b>IR No. &amp; Name:</b> IR 1.3: Good Governance Strengthened
<b>Sub-IR No. &amp; Name:</b> Sub-IR 1.3.2: Increased Capacity of Civil Society and Private Citizens to Participate Effective in Public Decision Making
<b>No. &amp; Name of Activity(s):</b> 72048618CA00008, Together
<b>No. &amp; Name of Action(s)/Intervention(s):</b> Output 3.1: Empowered diverse communities and CSOs to engage constructively with each other on issues that affect them and mitigate conflict. And Output 3.2 Increased/created channels for constructive dialogue among groups of different backgrounds.
<b>Geographic Coverage:</b> Thailand
<b>Origin of indicator:</b> Current Foreign Assistance Framework ("F") indicator <u>X</u> No. PS.6.2-2, for reporting year(s) 2020-2022, program area/element/sub-element Peace and Security; Existing PMP Indicator ____ No. ____; Existing IR/Project Indicator ____ No. ____; USAID Global/Regional Indicator ____ (specify ____); Other (specify):
<b>Is this indicator subject to a data quality assessment (DQA) by USAID?</b> Yes <u>X</u> No ____
<b>DESCRIPTION</b>
<p><b>Indicator Definition:</b></p> <p>This indicator registers the number of USG-funded activity activities – such as a trainings or events – that aim to build popular support for peace or reconciliation among the general population. Each activity, event, or training counts as one unit. Individual training sessions are not counted, but the overall training is. To be counted, an activity, training, or event must be time-limited in duration. If a broader activity includes a training (or an event of some kind), only the broader activity should be counted. Generally, any event designed for the purpose of disseminating a message to the general public (as opposed to only key leaders) can be considered to support peace and reconciliation on a mass scale.</p> <p>The number of people attending these events, trainings or activities designed to build mass support for peace and reconciliation should be reported under indicators PS.6.2-4.</p> <p>Training: For this indicator, training is defined as an intervention/session (virtual and/or in person) of at least 3 hours that has learning objectives and focuses on enhancing a certain skill. A focus group or meeting can be considered under training if within the skills topics noted below.</p> <p>Further Specification:</p> <p><i>Together</i> will count the following types of activities under this indicator. All activities noted below are illustrative and may or may not occur or be implemented in the numbers or at the times indicated, based on the situation in <i>Together</i> focus areas and the interests and priorities of <i>Together</i> partners and other CSOs <i>Together</i> may work with. For more current information, see <i>Together</i> annual Work Plans, Quarterly and Final Progress Reports.</p> <p><u>Common Mindset Creation events</u> – to provide a firm foundation for partnerships and clear understanding of expectations among partners, <i>Together</i> will implement a series of Common Mindset Creation (CMC) events. The purpose of the events is to create a common vision and set of values, objectives and expectations for the overall partnerships between <i>Together</i> and the CSOs involved, particularly regarding <i>Together</i>'s core purpose. Core components of the shared vision and values are deep commitments to innovation and creativity – a strong desire and eagerness to move away from the standard ways of work and embrace news methods and approaches. Through their participation in these events, the partners will understand clearly that collaboration with <i>Together</i> includes, by definition, designing and implementing new approaches and thus an ability to change, expand networks and accept and learn from failure. The CMC events also upend the classical approach of beginning partnerships with training needs assessments, designing course content accordingly, and conducting training events. Instead, CMC begins with expanding the box of opportunities. In fact, it throws away the box and starts with introductions to radically new ways of thinking about the roles and actions of CSOs regarding advocacy and public communications, new ways of work and new tools that can be brought to bear on existing issues. These events support achievement of <i>Together</i> objective 2, output 2.1. Activities will be conducted in Bangkok and Pattani. Activities will be conducted in February-March 2020.</p> <p><u>Advocacy campaigns</u> – successful advocacy campaigns are built on a foundation of information that provides justification for the policy or process changes sought, and evidence of the impact that policy/process change may bring. <i>Together</i> will address this issue through technical training, mentoring, and support for targeted CSO</p>

## Together Activity Indicator Reference Sheet

advocacy campaigns. *Together* will support partner advocacy campaigns throughout the agreement period in areas where *Together* core partners operate. Partner advocacy campaigns support achievement of *Together* objective 2, output 2.1. Activities will be conducted mainly in Bangkok, Chiang Mai, Lampang, Khon Kaen, Kalasin, Yala, Pattani and Narathiwat, and possibly other locations as appropriate. These long-term activities will begin about August 2020 and may continue through June 2022, pending discussions and planning with the organizations involved.

Media accelerator workshops and actions – communications campaigns are vital tools in enhancing civil society’s role as an advocate for the public interests. Unfortunately, many NGOs lack the creativity and resources to create effective communications campaigns that extend their messages out to a broad audience. *Together* will address this issue by focusing on developing core partner media groups capacity to act as “accelerators” of key advocacy messages – that is, getting the word out to a larger audience alongside the efforts of core partner NGOs leading advocacy efforts. Training courses and workshops may include discussion of the use of social media, internet and other online platforms to accelerate message dissemination to key stakeholders. In addition, *Together* will assist media group core partners to design content on key issues associated with advocacy campaigns for distribution through their networks. Distribution strategies will include use of video, web and social media channels. *Together* will conduct the workshops and support the work of media partners as accelerators periodically throughout the agreement period in areas where *Together* core media partners and other grant award recipients operate. These workshops support achievement of *Together* objective 2, output 2.2. Activities will be conducted mainly in Bangkok, Chiang Mai, Lampang, Khon Kaen, Kalasin, Yala, Pattani and Narathiwat, and possibly other locations as appropriate. These long-term activities will begin about August 2020 and may continue through June 2022, pending discussions and planning with the organizations involved.

Grant award co-design events – as part of the APS selection process, *Together* invites select applicants to collaborate in the final design of a proposal to ensure they are conceptually and technically sound, clear and complete, and relevant to *Together* objectives. Workshop sessions include analysis of the project context and discussion of the conflict to be addressed, the implementation framework, human resource requirements and budgeting. *Together* will conduct these events as part of the annual solicitation of concept notes under an APS and selection of final proposal to submit to USAID for review. The events will be conducted in locations where the applicants work. These activities most directly support achievement of *Together* objective 3, output 3.1. Activities will be conducted mainly in Bangkok, Chiang Mai, Lampang, Khon Kaen, Kalasin, Yala, Pattani and Narathiwat, and possibly other locations as appropriate. They will be conducted about 3-6 times per year throughout the life of *Together*.

Activities to address drivers of conflict – *Together* will solicit concept notes from local CSOs through APSs to improve relations and constructive dialogue among citizens of different backgrounds and, in doing so, address drivers of conflict highlighted by *Together* research findings. *Together* will announce the APS annually and select approximately 5 organizations for participation in co-design events to develop their concept notes into full proposal for submission to USAID for review. The activities will be implemented in locations where the applicants work. These activities most directly support achievement of *Together* objective 3, output 3.1. Activities will be conducted mainly in Bangkok, Chiang Mai, Lampang, Khon Kaen, Kalasin, Yala, Pattani and Narathiwat, and possibly other locations as appropriate. The activities will be of about 9-12 months duration each and will be conducted throughout the life of *Together*.

Countering hate speech events – extremist messages and information originating within and outside of Thailand are being propagated through social media throughout the country. Thus, *Together* will conduct workshops with CSO partners on hate speech and how to counter it in their activities. Core partner representatives and relevant local leaders (“non-violent influencers”) will participate in workshops to improve their ability to assess the sources, audiences and content of specific messages and narratives, and discuss how they might use these skills to counter hate speech by disseminating facts and raising awareness through their communication platforms (social media and others) and by promoting constructive dialogue in their communities. *Together* will conduct the workshops periodically throughout the agreement period in areas where *Together* core partners and other grant award recipients operate. These workshops support achievement of *Together* objective 3, output 3.2. Activities will be conducted mainly in Bangkok, Chiang Mai, Lampang, Khon Kaen, Kalasin, Yala, Pattani and Narathiwat, and possibly other locations as appropriate. They will be conducted about 3 times per year throughout the life of *Together*.

**Unit of Measurement:** Number of events, trainings, and activities

**Disaggregation(s):** None

**Data Collection:** Staff write or collect event reports from partners, upload in TAMIS

**Data Source(s):** Self-implemented SOW, Grant Award, Sub-contract documents

**Reporting Frequency:** Annual

## Together Activity Indicator Reference Sheet

DATA QUALITY
<b>Date of Previous Data Quality Assessment &amp; Reviewer:</b> None (new Activity and Indicator)
<b>Date of the Next Data Quality Assessment:</b> October 2020
PLAN FOR DATA USE
<b>Known Data Limitations:</b> There are no known data limitations
<b>Plan for Data Use:</b> Reporting; review of Activity strategy, approach and actions; raising awareness among stakeholders of outcomes of their actions (i.e., promote stakeholder learning)
CHANGES TO INDICATOR
<b>Change to Indicator:</b> None
<b>Other Notes:</b> None
<b>This sheet was last updated on:</b> 19 January 2021 <b>by</b> <i>Together</i> COP, and was last reviewed & approved on: _____, by: _____

## Together Activity Indicator Reference Sheet

<b>Indicator No. &amp; Name:</b> PS.6.2-4: Number of people participating in USG-supported events, trainings, or activities designed to build mass support for peace and reconciliation (F indicator)
<b>DO No. &amp; Name:</b> DO 1: Regional Institutions' Ability to Promote Sustainable and Inclusive Regional Growth Increased
<b>IR No. &amp; Name:</b> IR 1.3: Good Governance Strengthened
<b>Sub-IR No. &amp; Name:</b> Sub-IR 1.3.2: Increased Capacity of Civil Society and Private Citizens to Participate Effective in Public Decision Making
<b>No. &amp; Name of Activity(s):</b> 72048618CA00008, Together
<b>No. &amp; Name of Action(s)/Intervention(s):</b> Output 3.1: Empowered diverse communities and CSOs to engage constructively with each other on issues that affect them and mitigate conflict. And Output 3.2 Increased/created channels for constructive dialogue among groups of different backgrounds.
<b>Geographic Coverage:</b> Thailand
<b>Origin of indicator:</b> Current Foreign Assistance Framework ("F") indicator <input checked="" type="checkbox"/> No. PS.6.2-4, for reporting year(s) 2020-2022, program area/element/sub-element: Peace and Security Existing PMP Indicator ____ No. ____; Existing IR/Project Indicator ____ No. ____; USAID Global/Regional Indicator ____ (specify ____); Other (specify):
<b>Is this indicator subject to a data quality assessment (DQA) by USAID?</b> Yes <input type="checkbox"/> No <input checked="" type="checkbox"/>
<b>DESCRIPTION</b>
<p><b>Indicator Definition:</b></p> <p>This indicator registers number of men and women identified with a party or parties to the conflict attending events or activities, both public and private, related to building support for peace and reconciliation.</p> <p>Count each person only once per year.</p> <p>The number of events, trainings or activities designed to build support for peace and reconciliation on a mass scale should be reported under indicators PS.6.2-2.</p> <p>Training: For this indicator, training is defined as an intervention/session (virtual and/or in person) of at least 3 hours that has learning objectives and focuses on enhancing a certain skill. A focus group or meeting can be considered under training if within the listed skills topics. Individuals will be considered trained if they attend approximately 75% of the training period (i.e., 1-day training course, must attend 1 day; 2-day course, must attend 2 days; 3-day course must attend at least 2 days; 4- or 5-day course, must attend at least 3 days). Individuals completing less will not be counted. Count each person once even if they attend multiple trainings within the reporting period.</p> <p>Further Specification:</p> <p><i>Together</i> will count the following types of activities under this indicator. All activities noted below are illustrative and may or may not occur or be implemented in the numbers or at the times indicated, based on the situation in <i>Together</i> focus areas and the interests and priorities of <i>Together</i> partners and other CSOs <i>Together</i> may work with. For more current information, see <i>Together</i> annual Work Plans, Quarterly and Final Progress Reports.</p> <p><u>Common Mindset Creation events</u> – to provide a firm foundation for partnerships and clear understanding of expectations among partners, <i>Together</i> will implement a series of Common Mindset Creation (CMC) events. The purpose of the events is to create a common vision and set of values, objectives and expectations for the overall partnerships between <i>Together</i> and the CSOs involved, particularly regarding <i>Together's</i> core purpose. Core components of the shared vision and values are deep commitments to innovation and creativity – a strong desire and eagerness to move away from the standard ways of work and embrace new methods and approaches. Through their participation in these events, the partners will understand clearly that collaboration with <i>Together</i> includes, by definition, designing and implementing new approaches and thus an ability to change, expand networks and accept and learn from failure. The CMC events also upend the classical approach of beginning partnerships with training needs assessments, designing course content accordingly, and conducting training events. Instead, CMC begins with expanding the box of opportunities. In fact, it throws away the box and starts with introductions to radically new ways of thinking about the roles and actions of CSOs regarding advocacy and public communications, new ways of work and new tools that can be brought to bear on existing issues. These events support achievement of <i>Together</i> objective 2,</p>

## Together Activity Indicator Reference Sheet

output 2.1. Activities will be conducted in Bangkok and Pattani. Activities will be conducted in February-March 2020.

Advocacy campaigns – successful advocacy campaigns are built on a foundation of information that provides justification for the policy or process changes sought, and evidence of the impact that policy/process change may bring. *Together* will address this issue through technical training, mentoring, and support for targeted CSO advocacy campaigns. *Together* will support partner advocacy campaigns throughout the agreement period in areas where *Together* core partners operate. Partner advocacy campaigns support achievement of *Together* objective 2, output 2.1. Activities will be conducted mainly in Bangkok, Chiang Mai, Lampang, Khon Kaen, Kalasin, Yala, Pattani and Narathiwat, and possibly other locations as appropriate. These long-term activities will begin about August 2020 and may continue through June 2022, pending discussions and planning with the organizations involved.

Media accelerator workshops and actions – communications campaigns are vital tools in enhancing civil society's role as an advocate for the public interests. Unfortunately, many NGOs lack the creativity and resources to create effective communications campaigns that extend their messages out to a broad audience. *Together* will address this issue by focusing on developing core partner media groups capacity to act as "accelerators" of key advocacy messages – that is, getting the word out to a larger audience alongside the efforts of core partner NGOs leading advocacy efforts. Training courses and workshops may include discussion of the use of social media, internet and other online platforms to accelerate message dissemination to key stakeholders. In addition, *Together* will assist media group core partners to design content on key issues associated with advocacy campaigns for distribution through their networks. Distribution strategies will include use of video, web and social media channels. *Together* will conduct the workshops and support the work of media partners as accelerators periodically throughout the agreement period in areas where *Together* core media partners and other grant award recipients operate. These workshops support achievement of *Together* objective 2, output 2.2. Activities will be conducted mainly in Bangkok, Chiang Mai, Lampang, Khon Kaen, Kalasin, Yala, Pattani and Narathiwat, and possibly other locations as appropriate. These long-term activities will begin about August 2020 and may continue through June 2022, pending discussions and planning with the organizations involved.

Grant award co-design events – as part of the APS selection process, *Together* invites select applicants to collaborate in the final design of a proposal to ensure they are conceptually and technically sound, clear and complete, and relevant to *Together* objectives. Workshop sessions include analysis of the project context and discussion of the conflict to be addressed, the implementation framework, human resource requirements and budgeting. *Together* will conduct these events as part of the annual solicitation of concept notes under an APS and selection of final proposal to submit to USAID for review. The events will be conducted in locations where the applicants work. These activities most directly support achievement of *Together* objective 3, output 3.1. Activities will be conducted mainly in Bangkok, Chiang Mai, Lampang, Khon Kaen, Kalasin, Yala, Pattani and Narathiwat, and possibly other locations as appropriate. They will be conducted about 3-6 times per year throughout the life of *Together*.

Activities to address drivers of conflict – *Together* will solicit concept notes from local CSOs through APSs to improve relations and constructive dialogue among citizens of different backgrounds and, in doing so, address drivers of conflict highlighted by *Together* research findings. *Together* will announce the APS annually and select approximately 5 organizations for participation in co-design events to develop their concept notes into full proposal for submission to USAID for review. The activities will be implemented in locations where the applicants work. These activities most directly support achievement of *Together* objective 3, output 3.1. Activities will be conducted mainly in Bangkok, Chiang Mai, Lampang, Khon Kaen, Kalasin, Yala, Pattani and Narathiwat, and possibly other locations as appropriate. The activities will be of about 9-12 months duration each and will be conducted throughout the life of *Together*.

Countering hate speech events – extremist messages and information originating within and outside of Thailand are being propagated through social media throughout the country. Thus, *Together* will conduct workshops with CSO partners on hate speech and how to counter it in their activities. Core partner representatives and relevant local leaders ("non-violent influencers") will participate in workshops to improve their ability to assess the sources, audiences and content of specific messages and narratives, and discuss how they might use these skills to counter hate speech by disseminating facts and raising awareness through their communication platforms (social media and others) and by promoting constructive dialogue in their communities. *Together* will conduct the workshops periodically throughout the agreement period in areas where *Together* core partners and other grant award recipients operate. These workshops support achievement of *Together* objective 3, output 3.2. Activities will be conducted mainly in Bangkok, Chiang Mai, Lampang, Khon Kaen, Kalasin, Yala, Pattani and Narathiwat, and possibly other locations as appropriate. They will be conducted about 3 times per year throughout the life of *Together*.

**Unit of Measurement:** Number of people

## Together Activity Indicator Reference Sheet

<b>Disaggregation(s):</b> Sex (male and female)
<b>Data Collection:</b> Staff write or collect event reports from partners, upload in TAMIS. For large public events, number of participants estimated by head count.
<b>Data Source(s):</b> Event report, and participant attendance sheet
<b>Reporting Frequency:</b> Annual
<b>DATA QUALITY</b>
<b>Date of Previous Data Quality Assessment &amp; Reviewer:</b> None (new Activity and Indicator)
<b>Date of the Next Data Quality Assessment:</b> October 2020
<b>PLAN FOR DATA USE</b>
<b>Known Data Limitations:</b> There are no known data limitations
<b>Plan for Data Use:</b> Reporting; review of Activity strategy, approach and actions; raising awareness among stakeholders of outcomes of their actions (i.e., promote stakeholder learning)
<b>CHANGES TO INDICATOR</b>
<b>Change to Indicator:</b> None
<b>Other Notes:</b> None
<b>This sheet was last updated on: 19 January 2021 by <i>Together</i> COP, and was last reviewed &amp; approved on: _____, by: _____</b>



## Together Activity Indicator Reference Sheet

<b>Indicator No. &amp; Name:</b> GNDR-8: Number of persons trained with USG assistance to advance outcomes consistent with gender equality or female empowerment through their roles in public or private sector institutions or organizations (F indicator)
<b>DO No. &amp; Name:</b> DO 1: Regional Institutions' Ability to Promote Sustainable and Inclusive Regional Growth Increased
<b>IR No. &amp; Name:</b> IR 1.3: Good Governance Strengthened
<b>Sub-IR No. &amp; Name:</b> Sub-IR 1.3.2: Increased Capacity of Civil Society and Private Citizens to Participate Effective in Public Decision Making
<b>No. &amp; Name of Activity(s):</b> 72048618CA00008, Together
<b>No. &amp; Name of Action(s)/Intervention(s):</b> Output 1.1: Improved capacity of government officials to better communicate with citizens; Output 1.2: Improved strategies to strengthen channels for local citizen concerns to heard; output 2.1: increased CSO advocacy, research and communication skills to inform targeted audiences; Output 2.2: Improved evidence-based media coverage of key issues in moderate, non-inflammatory way; Output 2.3: Developed/Improved CSO tools to support citizens in communicating with government; Output 3.1: Empowered diverse communities and CSOs to engage constructively with each other on issues that affect them and mitigate conflict; and Output 3.2: Increased/created channels for constructive dialogue among groups of different backgrounds.
<b>Geographic Coverage:</b> Thailand
<b>Origin of indicator:</b> Current Foreign Assistance Framework ("F") indicator <input checked="" type="checkbox"/> No. <input type="checkbox"/> GNDR-8 _____, for reporting year(s) 2020-2022, program area/element/sub-element: Cross-cutting (Gender); Existing PMP Indicator _____ No. _____; Existing IR/Project Indicator _____ No. _____; USAID Global/Regional Indicator _____ (specify _____); Other (specify):
<b>Is this indicator subject to a data quality assessment (DQA) by USAID?</b> Yes <input checked="" type="checkbox"/> No <input type="checkbox"/>
<b>DESCRIPTION</b>
<p><b>Indicator Definition:</b></p> <p>This indicator is a count of the number of persons trained with USG assistance to advance gender equality or female empowerment objectives in the context of their official/formal role(s) within a public or private sector institution or organization.</p> <p>To be counted under this indicator, a person must have been trained in their role as an actor within a public or private sector institution or organization. Persons receiving training in their individual capacity, such as livelihoods training designed to increase individual or household income, should not be counted under this indicator. Public or private sector institutions or organizations include but are not limited to: government agencies forming part of the executive, judicial, or legislative branches; public and private health, financial, and education institutions; and civil society organizations such as rights advocacy groups, business associations, faith-based groups, and labor unions.</p> <p>To be counted under this indicator, persons must have participated in a training of at least 3 hours, with content designed to develop or strengthen the institution's/organization's capacity to advance gender equality or female empowerment objectives. Stand-alone gender trainings may be counted under this indicator, as well as trainings where gender is integrated within a broader sector training. In the latter case, the training must include a substantial focus on gender issues (e.g., gender issues are addressed throughout the training, there is a gender module that explores the relevant gender issues in depth, etc.).</p> <p>Further Specification:</p> <p><i>Together</i> will count the following types of activities under this indicator. All activities noted below are illustrative and may or may not occur or be implemented in the numbers or at the times indicated, based on the situation in <i>Together</i> focus areas and the interests and priorities of <i>Together</i> partners and other CSOs <i>Together</i> may work with. For more current information, see <i>Together</i> annual Work Plans, Quarterly and Final Progress Reports.</p> <p><u>Common Mindset Creation events</u> – to provide a firm foundation for partnerships and clear understanding of expectations among partners, <i>Together</i> will implement a series of Common Mindset Creation (CMC) events. The purpose of the events is to create a common vision and set of values, objectives and expectations for the overall partnerships between <i>Together</i> and the CSOs involved, particularly regarding <i>Together's</i> core purpose. Core components of the shared vision and values are deep commitments to innovation and creativity – a strong desire and eagerness to move away from the standard ways of work and embrace news methods and approaches. Through their participation in these events, the partners will understand clearly that collaboration with <i>Together</i> includes, by definition, designing and implementing new approaches and thus an ability to change, expand networks and accept and learn from failure. The CMC events also upend the classical approach of beginning partnerships with training needs assessments, designing course content accordingly, and conducting training events. Instead, CMC begins with expanding the box of opportunities. In fact, it throws away the box and starts with introductions to</p>

## Together Activity Indicator Reference Sheet

radically new ways of thinking about the roles and actions of CSOs regarding advocacy and public communications, new ways of work and new tools that can be brought to bear on existing issues. These events support achievement of *Together* objective 2, output 2.1. Activities will be conducted in Bangkok and Pattani. Activities will be conducted in February-March 2020.

Grant award co-design events – as part of the APS selection process, *Together* invites select applicants to collaborate in the final design of a proposal to ensure they are conceptually and technically sound, clear and complete, and relevant to *Together* objectives. Workshop sessions include analysis of the project context and discussion of the conflict to be addressed, the implementation framework, human resource requirements and budgeting. *Together* will conduct these events as part of the annual solicitation of concept notes under an APS and selection of final proposal to submit to USAID for review. The events will be conducted in locations where the applicants work. These activities most directly support achievement of *Together* objective 3, output 3.1. Activities will be conducted mainly in Bangkok, Chiang Mai, Lampang, Khon Kaen, Kalasin, Yala, Pattani and Narathiwat, and possibly other locations as appropriate. They will be conducted about 3-6 times per year throughout the life of *Together*.

Learning workshops with government officials – To encourage sharing of experiences and learning among government partners, *Together* will conduct Pause and Reflect Sessions that will bring together government counterparts to reflect on *Together*-supported activities and to identify clearly what is working well, analyze why it is working well, and discuss how to do more of it. These workshops are part of the *Together* MEL Plan learning activities and thus support achievement of all *Together* objectives. Workshops will be conducted mainly in Bangkok but may also be conducted in other provinces where *Together* works, as appropriate. The workshops will be conducted once annually, and begin about August 2020 and may continue through June 2022, pending discussions and planning with the organizations involved.

Workshops with CSO and government core partners – *Together* will support the establishment of learning networks that include CSOs and RTG counterparts to facilitate the sharing of experiences and lessons learned through project implementation. Networking workshops will be convened about once annually to encourage regular interaction and cooperative learning. The learning network and associated workshops will strengthen core partner knowledge and understanding of, and best fit practices for addressing drivers of conflict and issues underlining vulnerabilities to latent and violent conflict, and gender equality and social inclusion concerns. These workshops are part of the *Together* MEL Plan learning activities and thus support achievement of all *Together* objectives. Workshops will be conducted mainly in Bangkok but may also be conducted in other provinces where *Together* works, as appropriate. The workshops will be conducted once annually, and begin about August 2020 and may continue through June 2022, pending discussions and planning with the organizations involved.

**Unit of Measurement:** Number of persons trained

**Disaggregation(s):** Sex (male and female)

**Data Collection:** Staff write or collect event reports from partners, upload in TAMIS.

**Data Source(s):** Event report, and participant attendance sheet

**Reporting Frequency:** Annual

### DATA QUALITY

**Date of Previous Data Quality Assessment & Reviewer:** None (new Activity and Indicator)

**Date of the Next Data Quality Assessment:** October 2020

### PLAN FOR DATA USE

**Known Data Limitations:** There are no known data limitations

**Plan for Data Use:** Reporting; review of Activity strategy, approach and actions; raising awareness among stakeholders of outcomes of their actions (i.e., promote stakeholder learning)

### CHANGES TO INDICATOR

**Change to Indicator:** None

**Other Notes:** None

**This sheet was last updated on: 19 January 2021 by *Together* COP, and was last reviewed & approved on: \_\_\_\_\_, by: \_\_\_\_\_**

## Together Activity Indicator Reference Sheet

<b>Indicator No. &amp; Name: YOUTH-1: Number of youth trained in soft skills/life skills through USG assisted programs (F indicator)</b>
<b>DO No. &amp; Name: DO 1: Regional Institutions' Ability to Promote Sustainable and Inclusive Regional Growth Increased</b>
<b>IR No. &amp; Name: IR 1.3: Good Governance Strengthened</b>
<b>Sub-IR No. &amp; Name: Sub-IR 1.3.2: Increased Capacity of Civil Society and Private Citizens to Participate Effective in Public Decision Making</b>
<b>No. &amp; Name of Activity(s): 72048618CA00008, Together</b>
<b>No. &amp; Name of Action(s)/Intervention(s): Output 2.1: Increased CSO advocacy, research and communication skills to inform targeted audiences.</b>
<b>Geographic Coverage: Thailand</b>
<b>Origin of indicator:</b> Current Foreign Assistance Framework ("F") indicator <input checked="" type="checkbox"/> No. <u>YOUTH-1</u> , for reporting year(s) 2020-2022, program area/element/sub-element: Cross-cutting (Youth); Existing PMP Indicator <u>      </u> No. <u>      </u> ; Existing IR/Project Indicator <u>      </u> No. <u>      </u> ; USAID Global/Regional Indicator <u>      </u> (specify <u>      </u> ); Other (specify):
<b>Is this indicator subject to a data quality assessment (DQA) by USAID?</b> Yes <input checked="" type="checkbox"/> No <input type="checkbox"/>
<b>DESCRIPTION</b>
<p><b>Indicator Definition:</b></p> <p>"Soft skills/life skills" are defined as "a broad set of skills, competencies, behaviors, attitudes, and personal qualities that enable people to effectively navigate their environment, work well with others, perform well, and achieve their goals" (Lippman et al. 2015). This includes a range of skills that are relevant to a variety of sectors, including but not limited to skills such as management, leadership, social, and/or civic engagement skills.</p> <p>"Trained" means that an individual has met the completion requirements of a skills training program. The specific definition of 'completion' is defined by the program offered. For this indicator, skills training is defined as an intervention/session (virtual and/or in person) that has learning objectives and focuses on enhancing a certain skill. A focus group, mentoring or coaching activity, apprenticeship, or internship can be considered under training if it targets soft skill development.</p> <p>"Youth" is defined as individuals aged 10-29 years.</p> <p>"Number of Youth" includes those who have completed skills training programs delivered directly by USAID implementing partners or by other trainees as part of a deliberate service delivery strategy (e.g. cascade training). Each youth should be counted only once, regardless of the number of program components in which the youth participated.</p> <p>Further Specification:</p> <p>For the <i>Together</i>, Youth defined as individuals aged 20-29 years old.</p> <p>Number of youth includes those who have completed skills training programs delivered directly by <i>Together</i> or by other trainers as part of the Activity's strategy. Each youth should be counted only once, regardless of the number of program components in which the youth participated.</p> <p>For <i>Together</i>, trained means that an individual has met the completion requirement of a skills training program. For this indicator, skills training is defined as an intervention/session (virtual and/or in-person) that has learning objectives and focuses on enhancing a certain skill. A focus group or meeting can be considered as training if within the listed skills topics. "Completed" is defined as individuals who attended approximately 75% of the training period (i.e., 1-day training course, must attend 1 day; 2-day course, must attend 2 days; 3-day course must attend at least 2 days; 4- or 5-day course, must attend at least 3 days). Individuals completing less will not be counted.</p> <p><i>Together</i> will count the following types of activities under this indicator. All activities noted below are illustrative and may or may not occur or be implemented in the numbers or at the times indicated, based on the situation in <i>Together</i> focus areas and the interests and priorities of <i>Together</i> partners and other CSOs <i>Together</i> may work with. For more current information, see <i>Together</i> annual Work Plans, Quarterly and Final Progress Reports.</p> <p><u>Countering hate speech events</u> – extremist messages and information originating within and outside of Thailand are being propagated through social media throughout the country. Thus, <i>Together</i> will conduct workshops with CSO partners on hate speech and how to counter it in their activities. Core partner representatives and relevant local leaders ("non-violent influencers") will participate in workshops to improve their ability to assess the sources, audiences and content of specific messages and narratives, and discuss how they might use these skills to counter hate speech</p>

## Together Activity Indicator Reference Sheet

<p>by disseminating facts and raising awareness through their communication platforms (social media and others) and by promoting constructive dialogue in their communities. <i>Together</i> will conduct the workshops periodically throughout the agreement period in areas where <i>Together</i> core partners and other grant award recipients operate. These workshops support achievement of <i>Together</i> objective 3, output 3.2. Activities will be conducted mainly in Bangkok, Chiang Mai, Lampang, Khon Kaen, Kalasin, Yala, Pattani and Narathiwat, and possibly other locations as appropriate. They will be conducted about 3 times per year throughout the life of <i>Together</i>.</p> <p><u>Innovative dialogue workshops</u> – As grant awards that focus on activities to address drivers of conflict conclude, under Objective 3, <i>Together</i> will support “innovative dialogue workshops” with recipients to discuss and assess new channels or innovative approaches and tools they used to bring citizens of different backgrounds together for dialogue on contentious issues. These workshops will lead to the documentation of innovative dialogue techniques that <i>Together</i> can promote and support in other locales. Event reports will also present how the techniques were used, stakeholder assessment of the techniques and specific results of improved dialogue among groups in project locations, including outcomes involving women, youth and marginalized groups. <i>Together</i> will conduct the workshops periodically throughout the agreement period in areas where <i>Together</i> core partners and other grant award recipients operate. These workshops support achievement of <i>Together</i> objective 3, output 3.2. Activities will be conducted mainly in Bangkok, Chiang Mai, Lampang, Khon Kaen, Kalasin, Yala, Pattani and Narathiwat, and possibly other locations as appropriate. They will be conducted about 2 times per year throughout the life of <i>Together</i>.</p>
<b>Unit of Measurement:</b> Number of youth trained
<b>Disaggregation(s):</b> Sex and age: Males age 20-24; Females age 20-24; Males age 25-29; Females age 25-29; and province
<b>Data Collection:</b> Staff write or collect event reports from partners, upload in TAMIS. For large public events, number of participants estimated by head count.
<b>Data Source(s):</b> Event report, and participant attendance sheet
<b>Reporting Frequency:</b> Annual
<b>DATA QUALITY</b>
<b>Date of Previous Data Quality Assessment &amp; Reviewer:</b> None (new Activity and Indicator)
<b>Date of the Next Data Quality Assessment:</b> October 2020
<b>PLAN FOR DATA USE</b>
<b>Known Data Limitations:</b> There are no known data limitations
<b>Plan for Data Use:</b> Reporting; review of Activity strategy, approach and actions; raising awareness among stakeholders of outcomes of their actions (i.e., promote stakeholder learning)
<b>CHANGES TO INDICATOR</b>
<b>Change to Indicator:</b> None
<b>Other Notes:</b> None
<b>This sheet was last updated on: 19 January 2021 by <i>Together</i> COP, and was last reviewed &amp; approved on: _____, by: _____</b>

## Together Activity Indicator Reference Sheet

<b>Indicator No. &amp; Name:</b> 1.1. Perception of “Consensus Orientation” in sample of focus community members
<b>DO No. &amp; Name:</b> DO 1: Regional Institutions’ Ability to Promote Sustainable and Inclusive Regional Growth Increased
<b>IR No. &amp; Name:</b> IR 1.3: Good Governance Strengthened
<b>Sub-IR No. &amp; Name:</b> Sub-IR 1.3.2: Increased Capacity of Civil Society and Private Citizens to Participate Effective in Public Decision Making
<b>No. &amp; Name of Activity(s):</b> 72048618CA00008, Together
<b>No. &amp; Name of Action(s)/Intervention(s):</b> Objective 1: Improve existing mechanisms for targeted RTG institutions to receive input/feedback from citizens
<b>Geographic Coverage:</b> Thailand
<b>Origin of indicator:</b> Current Foreign Assistance Framework (“F”) indicator ____ No. _____, for reporting year(s) 2020-2022, program area/element/sub-element _____; Existing PMP Indicator ____ No. _____; Existing IR/Project Indicator ____ No. _____; USAID Global/Regional Indicator ____ (specify _____); Other (specify): Custom Outcome
<b>Is this indicator subject to a data quality assessment (DQA) by USAID?</b> Yes ___ No ___
<b>DESCRIPTION</b>
<p><b>Indicator Definition:</b></p> <p>“Consensus Orientation” refers to a compound variable developed in the <i>Together</i> Community Governance and Drivers of Conflict Research Project. It captures the perception of respondents regarding the degree of broad community involvement and of efforts to reach agreement in making decisions among community members and with local leaders and local government officials on the priority needs of their community.</p> <p>“Sample of focus community members” refers to a random sample of people in all project geographic locations during the period of <i>Together</i> activity implementation (e.g., all districts or provinces). The sample size is calculated from the total number of persons age 18-60 years in the location and provides a margin of error of +/- 7.5% at the 95% confidence interval. The sample is representative regarding the sex of respondents.</p> <p>The value of the compound variable “Consensus Orientation” is derived from responses to 4 survey questions:</p> <p style="padding-left: 20px;">(14p) To what extent do you agree or disagree with the following statements? You can respond strongly agree, agree somewhat, disagree somewhat, or strongly disagree: Traditional leaders often makes decisions that not everyone agrees with.</p> <p style="padding-left: 20px;">(19c) Next, I would like to ask you some questions about conditions in the community in which you are now living. You can respond strongly agree, agree somewhat, disagree somewhat, or strongly disagree: Leaders in the community in which I am now living consult all groups in the community before making decisions.</p> <p style="padding-left: 20px;">(19d) Next, I would like to ask you some questions about conditions in the community in which you are now living. You can respond strongly agree, agree somewhat, disagree somewhat, or strongly disagree: Officials in the community seek to find consensus among all residents.</p> <p style="padding-left: 20px;">(23d) To what extent do you agree or disagree with the following statements? You can respond strongly agree, agree somewhat, disagree somewhat, or strongly disagree: We should respect the collective decisions of our community.</p> <p>Survey data on the perceptions and opinions of community members will be collected in Chiang Mai, Khon Kaen, Yala, Pattani and Narathiwat at the outset (March 2019), middle (about June 2020) and end of the Activity (about July 2022). An increase in the value of the variable over time indicates positive progress (increased perception of consensus orientation in making decisions). <i>Together</i> will collect data and calculate variable values in March 2019, about June 2020 and about July 2022. Findings will be compared to discern whether there has been a significant change in the variable over time.</p> <p><b>Additional background information on the Community Governance and Drivers of Conflict Research Project</b></p> <p>During November 2018 to January 2019, a research partnership comprising the USAID-funded <i>Together</i> Project (implemented by DAI Global, LLC), Maejo University, Khon Kaen University, Yala Rajabhat University, Prince of Songkla University–Pattani Campus and Princess of Naradhiwas University (here after the “research team”) designed a mixed methods research project to explore issues of governance, social cohesion and conflict in the</p>

## Together Activity Indicator Reference Sheet

North, Northeast and Deep South regions of Thailand. The results of the study will be used in designing activities to strengthen citizen-government engagement and support community-community interaction and to assess the impact of these interventions. The research project includes a quantitative survey of a representative sample of residents in select provinces and interviews of a purposive sample of key actors and influential persons who are well-placed to provide personal insights and share experiences on issues of governance, social cohesion and conflict in the study area.

The objective of this research is to provide a better and more nuanced understanding of community governance and social cohesion issues, drivers of conflict and the pathways through which individuals become vulnerable to and involved with destructive or violent actions.

This objective will be achieved through a mixed methods research approach with qualitative and quantitative components. The first step in the research design process was to compile a list of key factors that underpin strong governance and social cohesion, and those assumed to be drivers of conflict. The research team did this through a close review of available research literature, consultation with experts on governance and conflict in Thailand, and discussions with academics, government officials and civil society leaders in the research area. To understand how the drivers of conflict form pathways to extreme actions, detailed case studies will be conducted through semi-structured interviews of people who have been personally involved in destructive or violent actions, members of their families or close friends, and people who have actively encouraged and influenced others to commit such actions.

The research also includes a quantitative survey of perceptions to enable a test of prevailing assumptions about the drivers of conflict, and to identify risk factors and define at-risk populations in the research area. The research team will collect a stratified random sample of 1,980 persons age 18 to 60 years from 11 provinces spread across the North, Northeast and Deep South regions of Thailand. The perceptions survey and case study interviews, and analysis of resulting data, will be conducted over a period of about three months, during March to May 2019.

The methodology proposed for this research project builds directly on the method developed and employed by Casey and Pottebaum in the Philippines (Casey, Kevin and David Pottebaum. Youth and Violent Extremism in Mindanao, Philippines: A Mixed-Methods Design for Testing Assumptions about Drivers of Extremism. DAI Global, LLC, Bethesda, Maryland, USA, August 2018. <https://www.dai.com/uploads/Youth%20and%20Violent%20Extremism%20in%20Mindanao,%20Philippines.pdf>). As they indicate in their paper, the field of development-based conflict and extremism research is very much in its infancy. Recent efforts by Hedayah and USIP's RESOLVE have provided a needed focus on methodology in the field (RESOLVE Network. Building Consensus and Setting Priorities for Research on Violent Extremism: Working Paper on Findings from Expert Consultations. United States Institute of Peace, September 2016). While these and other efforts have improved methodologies recently, there remains an overreliance on secondary sources and a lack of empirical data that can be used in statistical and inferential analyses. As a result, there remain many untested assumptions, particularly regarding factors driving conflict and extremism.

Casey and Pottebaum describe two gaps in the methodology that they suggest are filled by their mixed-methods approach. First is a lack of qualitative research focusing on the experience of extremists themselves. This results in a lack of clear understanding of the process of radicalization and of how extremists experience the drivers of conflict themselves. Research needs to be more grounded in the experiences of extremists to properly understand the dynamics of radicalization. The second gap highlighted by Casey and Pottebaum is the absence of inferential statistics and quantitative studies that can reveal how assumed drivers of conflict and extremism interact and correlate with social, political and economic factors. Quantitative studies tend to take the form of public opinion polling and include no effort to explore underlying relationships that may shape opinion.

This research project will build on the work of Casey and Pottebaum in two ways. First, it will replicate the method (adapted for the local context) in the similar, violence- and conflict-affected environment of the Deep South. This will test the efficacy of this methodology in a different geographic area with a different demographic group. Second, this research will expand use of the methodology to an environment characterized by tension and latent conflict (North and Northeast Thailand), where subjects of study are not extremists and extremist organizations, but rather persons and groups involved in destructive or violent acts during periods of heightened unrest. No examples could be found of significant research on this topic in these regions, indicating a void of tested methodological approaches in this regard.

At the outset of the design phase, the research team conducted a lengthy review of relevant literature to better understand the drivers of conflict and factors relevant to community governance and social cohesion in Thailand. Much of the literature and research to date can be characterized as general situational analyses and political-social assessments. Most studies relied on secondary data and interviews of a few key informants. Only a

## Together Activity Indicator Reference Sheet

handful included survey data from local populations. The literature predominantly focuses on the conflict in the Deep South, with little available on the North and Northeast. Research conducted by The Asia Foundation, Engvall and Vajirakachorn are noteworthy, adding much to the base of knowledge and provided a foundation for future studies, including the study presented here (Burke, Adam and Pauline Tweedie. *The Contested Corners of Asia: The Case of Southern Thailand*. The Asia Foundation, 2013. Engvall, Anders. *Trust and Conflict in Southern Thailand*. No Date. [https://editorialexpress.com/cgi-bin/conference/download.cgi?db\\_name=SERC2011&paper\\_id=234](https://editorialexpress.com/cgi-bin/conference/download.cgi?db_name=SERC2011&paper_id=234). Engvall, Anders and Magnus Andersson. *The Dynamics of Conflict in Southern Thailand*. *Asian Economic Papers*, Fall 2014, Volume 13, No 3, pp 169-189. Vajirakachorn, Surasit. *Social Inclusion in Southern Border Provinces of Thailand*. *International Journal of Social Quality*, Winter 2012, Vol. 2, Issue 2, pp 63-80).

### Study Outputs

The specific outputs of the research project include:

1. Identified and tested assumptions regarding the drivers of conflict.
2. Deeper understanding of key factors related to community governance and social cohesion.
3. Clarity on risk factors for destructive and violent actions and of geographic areas and demographic groups that are most vulnerable to being influenced to commit extreme acts.
4. An understanding of messages used to build support and influence people to commit extreme acts, and the channels of communication that they use.

### Methodology

This is a mixed methods study comprising two components: pathways case studies and a perceptions survey.

#### *Pathways Case Studies*

A hallmark of case study research is the use of multiple data sources, a feature which enhances data credibility. Case studies will be constructed from both primary and secondary data sources. A review of literature and discussion among research team members from the research locations led to initial themes and concepts that will guide interviews and revealed cases and events that will be explored during the field interviews. Interviews will be conducted with individuals (“Actors”) with direct experience with destructive and violent acts to better understand their assumptions around pathways and drivers of extremism. Interviews will also be conducted with persons who influenced or recruited others to participate in extreme acts (“Influencers”).

Primary data collection will be done through semi-structured interviews with Actors and their family members, friends and other associates, and with Influencers. Interview data will be used to build detailed case studies of pathways to extreme action and of communication methods and messages used to influence and recruit people to commit extreme acts. Interview respondents will be classified in two groups depending on their knowledge of and proximity to primary subjects. Primary respondents include actual Actors or Influencers. Secondary respondents are friends, family members or associates of Actors (case studies of Influencers will not include interviews with secondary respondents as these are not necessary to understand communication methods and messages). Case studies of Actors will aim to use at least three different respondents per case study to increase the validity of the findings.

Sampling for interviews will be conducted through a snowball sampling methodology. Initial interviews will be conducted with either primary or secondary respondents, depending upon the circumstances and researcher knowledge of the individuals involved. During interviews, researchers will ask respondents for names of other persons they might interview who have special knowledge on the topic. This sampling technique will be continued until enough cases are identified and sufficient interviews are conducted to write coherent and complete case studies. A total of 40 Actor case studies and 10 Influencer case studies will be conducted, including sixteen Actors and four of Influencers in the North Region and in the Northeast Region, and eight Actors and two influencers in the Deep South.

Interviews will be semi-structured, following a basic interview guide. Interviewers will ask follow-up questions and probe for clarification or for additional details. Detailed notes will be compiled immediately following each interview. When possible, interviews will be conducted by a lead interviewer assisted by a note taker.

#### *Perceptions Survey*

The quantitative component of the research project is a survey that explores perceptions and issues of

## Together Activity Indicator Reference Sheet

governance, social cohesion and drivers of conflict in three regions of Thailand. The survey will help clarify and deepen understanding of factors that leave people vulnerable to being influenced to commit destructive or violent actions, and to test prevailing assumptions about the drivers of conflict. It will define more precisely the at-risk populations that *Together* might work with in future activities, in collaboration with Royal Thai Government agencies and local civil society organizations. The survey will be completed using face-to-face interviews of people age 18 to 60 years in eleven provinces following a standard set of questions. The questions help define and provide quantitative measures of the abstract drivers and factors of interest in this study. Care will be taken to ensure that the group of respondents includes representation from youth, women and other marginalized groups, as appropriate.

Research location. The research area includes the North, Northeast and Deep South regions of Thailand. Considering population size, recent history regarding key events related to this study, and locations of research partner universities, the research area in the North was narrowed to the standard government local regions of Upper North 1 and Central Northeast, each comprising four provinces. Comprising just three provinces, it was not necessary to reduce the scope of the research area in the Deep South region. This provides a total of eleven provinces in the research area.

The literature review and expert opinion suggest that the population size of a given area might influence perceptions and the relative importance of drivers of conflict. Thus, districts for surveying within each province were purposively selected to include two with “more population” and two with “less population”. This was accomplished by ordering all districts in a province by population size (age 18 to 60 years), then splitting the districts into two groups – half of the total districts with greater population, and half of the population with less population. For example, consider a province with ten districts. The districts are ordered 1 through 10 by population size. The five districts with the greatest population are placed in one group, the other five with less population are placed in another group. A total of four districts are then randomly selected from each province, including two with greater population and two with smaller population. Following this approach, two sub-districts were selected randomly from the list of all sub-districts in each district (without consideration of population size, which was not relevant at this geographic level).

In each sub-district, a form of systematic random sampling of villages to survey will be used that is most appropriate to the context. In areas where 30 or fewer persons are to be surveyed, these persons will be selected randomly from one village. Where more than 30 persons are to be surveyed, the sample will be drawn from two villages selected randomly from within the sub-district.

Sample size. The eleven provinces in the research area provide the level of analysis for the survey (primary sampling unit). This will enable comparison of findings across provinces and regions. The target respondent sample size for each province was calculated based on a confidence interval of 95% and margin of error of +/- 7.5%. To ensure the minimum sample size is met, the number of interviews conducted is increased by 5% above the amount required to allow for the discarding of inaccurate or incomplete forms (note that the sample sizes indicated in Table 2 below include the additional 5% sample). Thus, a total of 1,980 persons will be surveyed (180 persons in each province).

Respondent Selection. Within each village, survey teams will select individuals to participate in the survey following a standard random process. Research teams will meet with relevant local government authorities to obtain census lists of persons residing in each selected village. The persons on these lists will be numbered sequentially, and a random number generator will then be used to randomly select persons from the list for interviewing. The number of persons randomly selected from the master list will be greater than the number required by the study to ensure adequate names (persons) have been shortlisted in case one or more persons on the shortlist are not available or choose not to participate in the survey interview.

### Design Limitations

The research team designed the research approach and tools with a goal of reducing the impact of standard biases encountered in social science research. Interviews with a broad array of individuals and a review of current literature were used to develop a comprehensive list of governance and social cohesion factors and drivers of conflict in Thailand most frequently highlighted by experts and discussed in the literature. The factors and drivers were not evaluated or ranked but were all taken as assumptions which would be tested equally through the research process. This reduced any potential confirmation bias on the part of the research team.

Research tools were structured to reduce common biases that arise from poor design. Leading or double-barreled questions were not used, questionnaires were structured to allow for rapport building before sensitive questions were broached, some questions were reverse coded and others were phrased using neutral language to reduce common response biases. All materials were introduced to research team members and orientation in



## Together Activity Indicator Reference Sheet

their use provided in native languages before administration, reducing chances for spontaneous translation errors. [The research team determined that all research documents (tools) were to be written in Thai Language, with orientation/training discussions in each region using local languages and dialects as appropriate. Interviews of respondents were conducted in either Thai or local language, depending upon the needs of the person interviewed.]

In addition, a random sampling plan was designed to draw as representative a sample as possible given project constraints. Random respondent selection and population quotas guard against selection biases.

Standard practices were followed to ensure the quality of the survey questionnaire. The validity of the questionnaire – the extent to which it measures what it is intended to measure – was established using face validity. The research team consulted a DAI expert on research regarding conflict and violence to discuss and confirm the validity of the factors and associated questions. In addition, the questionnaire to be used in this research project is largely based on and adapted to the Thai context from a similar survey used successfully and which yielded strong results in two separate cases across various demographic groups in the Philippines in 2017 and 2018 (which, in turn, was based on a survey used successfully in Thailand in 2012 under the Sapan Project). This provides assurance that the content of the survey instrument – the questions and variables – represent the domain of factors relevant to this study. Importantly, the questionnaire was constructed and tested through a methodical process by research team members who themselves are experts on the subject matter and are from and work in the various research locations.

Prior to implementing the full survey, the research team pilot tested the questionnaire in each region covered by the research project. A minimum of 20 persons were surveyed in each province, for a total pilot test of 220 persons. This highlighted unclear content and language issues and facilitated the review of the appropriateness and flow of the questions throughout the survey instrument.

Data from the pilot test was used to check the consistency of responses and thus the accuracy in implementing the tool (i.e., Enumerator skill in asking questions and ensuring respondent understanding of questions and response options). The questionnaire includes some negatively phrased questions; responses to these questions were reverse coded and compared for consistency with responses to similar positively phrased questions.

Following the review of pilot test results, the research team revised the questionnaire accordingly and briefed the Enumerators to all changes in content and approach.

The reliability of the questionnaire is also critical and will be tested by the research team following collection of final survey data. While reliability typically refers to the degree to which the results of a survey or measurement can be replicated across time – something not fully applicable for a survey of perceptions that can, and often do, change over time – it also addresses the aspect of the internal consistency of the questionnaire. That is, the extent to which the questions are measuring the same thing. Internal consistency will be estimated using Cronbach's alpha index (note that Cronbach's alpha index was used to measure the consistency of the questionnaire in the Philippines context on two occasions and no problems were found). Should the index score highlight weaknesses in internal consistency of the questionnaire, standard procedures will be followed to assess and, if needed, remove problematic questions (those not correlated closely with others) step-wise until acceptable reliability is obtained.

### Confidentiality and Informed Consent

*Together* and the University partners will implement strict measures to ensure respondent confidentiality. At the time of survey and interviews, respondents will be given a unique number and all documents associated with that respondent will use only the respondent number for identification. If names of specific individuals are discussed in a case study interview and end up in transcripts, names will immediately be redacted and replaced with a pseudonym or a number. As the case studies will have detailed personal information such that deductive disclosure is a concern, full case studies will not be shared with persons outside the research team or published publicly. Anonymous quotes and details can be used in the final report as the danger of deductive disclosure is minimal. Informed consent shall be obtained orally from each participant and participants will be given the option of not participating in the study as part of the informed consent process.

Do no harm. The research team designed the questionnaire and implementation approach using best practices for surveys in conflict areas and which cover sensitive issues. The pilot test confirmed that no questions were too sensitive or stressful for respondents, and that none would compromise their safety. Data will be collected by Enumerators who are from the research locations, who speak local languages and are closely familiar with the local context, helping to ease any anxieties that respondents may feel when discussing sensitive issues. Enumerators will be trained to observe for respondent discomfort, pain or anxiety, or if traumatic memories and

## Together Activity Indicator Reference Sheet

emotions are stirred during the interview and stop the interview if such conditions arise. The security of respondents and research staff is paramount. Survey tasks will not be conducted in areas known to be dangerous, interviews will be stopped and rescheduled or cancelled if security becomes tenuous during implementation.

### Data Quality Control, Processing and Analysis

Data quality begins with sound questionnaires and interview guidelines, and proper training of staff who will collect data in the field. The research team conducted separate training courses for Enumerators who will implement the perceptions survey, and for Interviewers who will complete the case studies. This ensures that this staff understand the overall research project and its objectives, their roles and responsibilities in collecting field data.

During the field survey, Field Supervisors will be present to assist the Enumerators to address problems that might arise and to observe the conduct of the survey to ensure consistency in approach and application of the survey instrument. Field Supervisors will directly observe a minimum of 10% of the survey interviews conducted in their designated research area to ensure all survey standard approaches are being followed as required.

As surveys are completed, the Field Supervisors and Survey Research Managers will review all data capture forms to ensure they were completed accurately, following guidelines presented in the Questionnaire Instructions document. Following their review, university partners will send all forms to Khon Kaen University for processing and statistical analysis tasks. Having a central location for these tasks ensures consistency in approach regarding the acceptance or rejection of data collected in each province, efficient data entry and application of standard and appropriate statistical analysis techniques.

Prior to data entry, research staff at Khon Kaen University will review all survey forms to ensure they are complete and readable. Forms missing data on respondent location or age, or with errors on 5 or more questions will be rejected (e.g., questions having none or more than two responses). A Survey Research Manager will oversee entry of survey data into the survey database. A minimum of 10% of each Data Entry Clerk's work will be double-entered and assessed to detect and minimize data entry errors.

Khon Kaen University-based research team members will complete all statistical analysis tasks, in close coordination with *Together* and the other partner universities.

Initial survey data analysis will focus on: (1) the identification and testing of assumptions regarding the drivers of conflict, and (2) understanding key issues related to governance and social cohesion in the research area. Regression analysis using composite indices for each of the assumed drivers will help identify factors associated with support for extreme action or ideas. For the second output, descriptive statistics and simple correlations and significance tests will be used to explore the data. The analysis will compare results across locations, sex, religion, and age cohort, as appropriate, to identify key findings that can inform targeted programming.

Analysis of case study data will proceed through two phases: building case studies and comparative analysis. As interviews are completed, case studies will be written based on primary and secondary interviews. Individual case studies will be 3-4 pages in length and include all pertinent details discovered data collection.

After the case studies are completed, comparative analysis will be conducted to describe the most common pathways to destructive or violent actions, identify common themes and highlight significant differences in the identified pathways. Case studies will be coded based on a coding matrix developed by the research group. Significant similarities and differences across different pathways will be identified and explored, and the most common pathways will be described in detail.

As the final step in the analysis of data, the research team will integrate the qualitative findings with those of the quantitative survey to help uncover or highlight causality between drivers of conflict and the destructive or extreme actions and extreme ideas. That is, the findings will not just rely on the results of regression analysis, but rather they will pull together those results with the studies of personal life experiences of the Actors interviewed to see how the factors “work” beyond just the correlations data.

**Unit of Measurement:** Compound variable

**Disaggregation(s):** Sex (male and female)

**Data Collection:** Survey using standard approach and tools

**Data Source(s):** Individual perception survey

**Reporting Frequency:** Data will be reported to USAID on/about June 2019 (baseline), September 2020, and September 2022 (beginning, middle and end of Activity)

## Together Activity Indicator Reference Sheet

DATA QUALITY
<b>Date of Previous Data Quality Assessment &amp; Reviewer:</b> None (new Activity and Indicator)
<b>Date of the Next Data Quality Assessment:</b> October 2020
PLAN FOR DATA USE
<b>Known Data Limitations:</b> There are no known data limitations
<b>Plan for Data Use:</b> Reporting; review of Activity strategy, approach and actions; raising awareness among stakeholders of outcomes of their actions (i.e., promote stakeholder learning)
CHANGES TO INDICATOR
<b>Change to Indicator:</b> None
<b>Other Notes:</b> None
<b>This sheet was last updated on: 7 May 2020, by <i>Together</i> COP, and was last reviewed &amp; approved on: _____, by: _____</b>

## Together Activity Indicator Reference Sheet

<b>Indicator No. &amp; Name: 1.2. Perception of “Participation” in sample of focus community members</b>
<b>DO No. &amp; Name:</b> DO 1: Regional Institutions’ Ability to Promote Sustainable and Inclusive Regional Growth Increased
<b>IR No. &amp; Name:</b> IR 1.3: Good Governance Strengthened
<b>Sub-IR No. &amp; Name:</b> Sub-IR 1.3.2: Increased Capacity of Civil Society and Private Citizens to Participate Effective in Public Decision Making
<b>No. &amp; Name of Activity(s):</b> 72048618CA00008, Together
<b>No. &amp; Name of Action(s)/Intervention(s):</b> Objective 1: Improve existing mechanisms for targeted RTG institutions to receive input/feedback from citizens
<b>Geographic Coverage:</b> Thailand
<b>Origin of indicator:</b> Current Foreign Assistance Framework (“F”) indicator ____ No. _____, for reporting year(s) 2020-2022, program area/element/sub-element _____; Existing PMP Indicator ____ No. _____; Existing IR/Project Indicator ____ No. _____; USAID Global/Regional Indicator ____ (specify _____); Other (specify): Custom Outcome
<b>Is this indicator subject to a data quality assessment (DQA) by USAID?</b> Yes ____ No ____
<b>DESCRIPTION</b>
<p><b>Indicator Definition:</b></p> <p>“Participation” refers to a compound variable developed in the <i>Together</i> Community Governance and Drivers of Conflict Research Project. It captures the perception of respondents regarding their involvement in decision-making processes and opportunities to provide their input to local leaders on the priority needs of their community.</p> <p>“Sample of focus community members” refers to a random sample of people in all project geographic locations during the period of <i>Together</i> implementation (e.g., all districts or provinces). The sample size is calculated from the total number of persons age 18-60 years in the location and provides a margin of error of +/- 7.5% at the 95% confidence interval. The sample is representative regarding the sex of respondents.</p> <p>The value of the compound variable “Participation” is derived from responses to 4 survey questions</p> <p>(14a) To what extent do you agree or disagree with the following statements? You can respond strongly agree, agree somewhat, disagree somewhat, or strongly disagree. I feel like I can play a strong role in decision making in my community.</p> <p>(14c) To what extent do you agree or disagree with the following statements? You can respond strongly agree, agree somewhat, disagree somewhat, or strongly disagree. I have opportunity to participate in discussions and decision making about affairs in my community.</p> <p>(14d) To what extent do you agree or disagree with the following statements? You can respond strongly agree, agree somewhat, disagree somewhat, or strongly disagree. Most important decisions in my community are made by others.</p> <p>(19f) Next, I would like to ask you some questions about conditions in the community in which you are now living. You can respond strongly agree, agree somewhat, disagree somewhat, or strongly disagree. Officials take into account the opinions of people like me when they make decisions.</p> <p>Survey data on the perceptions and opinions of community members will be collected in Chiang Mai, Khon Kaen, Yala, Pattani and Narathiwat at the outset (March 2019), middle (about June 2020) and end of the Activity (about July 2022). An increase in the value of the variable over time indicates positive progress (increased perception of consensus orientation in making decisions). <i>Together</i> will collect data and calculate variable values in March 2019, about June 2020 and about July 2022. Findings will be compared to discern whether there has been a significant change in the variable over time.</p> <p><b>Additional background information on the Community Governance and Drivers of Conflict Research Project</b></p> <p>During November 2018 to January 2019, a research partnership comprising the USAID-funded <i>Together</i> Project (implemented by DAI Global, LLC), Maejo University, Khon Kaen University, Yala Rajabhat University, Prince of Songkla University–Pattani Campus and Princess of Naradhiwas University (here after the “research team”) designed a mixed methods research project to explore issues of governance, social cohesion and conflict in the North, Northeast and Deep South regions of Thailand. The results of the study will be used in designing activities</p>

## Together Activity Indicator Reference Sheet

to strengthen citizen-government engagement and support community-community interaction and to assess the impact of these interventions. The research project includes a quantitative survey of a representative sample of residents in select provinces and interviews of a purposive sample of key actors and influential persons who are well-placed to provide personal insights and share experiences on issues of governance, social cohesion and conflict in the study area.

The objective of this research is to provide a better and more nuanced understanding of community governance and social cohesion issues, drivers of conflict and the pathways through which individuals become vulnerable to and involved with destructive or violent actions.

This objective will be achieved through a mixed methods research approach with qualitative and quantitative components. The first step in the research design process was to compile a list of key factors that underpin strong governance and social cohesion, and those assumed to be drivers of conflict. The research team did this through a close review of available research literature, consultation with experts on governance and conflict in Thailand, and discussions with academics, government officials and civil society leaders in the research area. To understand how the drivers of conflict form pathways to extreme actions, detailed case studies will be conducted through semi-structured interviews of people who have been personally involved in destructive or violent actions, members of their families or close friends, and people who have actively encouraged and influenced others to commit such actions.

The research also includes a quantitative survey of perceptions to enable a test of prevailing assumptions about the drivers of conflict, and to identify risk factors and define at-risk populations in the research area. The research team will collect a stratified random sample of 1,980 persons age 18 to 60 years from 11 provinces spread across the North, Northeast and Deep South regions of Thailand. The perceptions survey and case study interviews, and analysis of resulting data, will be conducted over a period of about three months, during March to May 2019.

The methodology proposed for this research project builds directly on the method developed and employed by Casey and Pottebaum in the Philippines (Casey, Kevin and David Pottebaum. Youth and Violent Extremism in Mindanao, Philippines: A Mixed-Methods Design for Testing Assumptions about Drivers of Extremism. DAI Global, LLC, Bethesda, Maryland, USA, August 2018. <https://www.dai.com/uploads/Youth%20and%20Violent%20Extremism%20in%20Mindanao.%20Philippines.pdf>). As they indicate in their paper, the field of development-based conflict and extremism research is very much in its infancy. Recent efforts by Hedayah and USIP's RESOLVE have provided a needed focus on methodology in the field (RESOLVE Network. Building Consensus and Setting Priorities for Research on Violent Extremism: Working Paper on Findings from Expert Consultations. United States Institute of Peace, September 2016). While these and other efforts have improved methodologies recently, there remains an overreliance on secondary sources and a lack of empirical data that can be used in statistical and inferential analyses. As a result, there remain many untested assumptions, particularly regarding factors driving conflict and extremism.

Casey and Pottebaum describe two gaps in the methodology that they suggest are filled by their mixed-methods approach. First is a lack of qualitative research focusing on the experience of extremists themselves. This results in a lack of clear understanding of the process of radicalization and of how extremists experience the drivers of conflict themselves. Research needs to be more grounded in the experiences of extremists to properly understand the dynamics of radicalization. The second gap highlighted by Casey and Pottebaum is the absence of inferential statistics and quantitative studies that can reveal how assumed drivers of conflict and extremism interact and correlate with social, political and economic factors. Quantitative studies tend to take the form of public opinion polling and include no effort to explore underlying relationships that may shape opinion.

This research project will build on the work of Casey and Pottebaum in two ways. First, it will replicate the method (adapted for the local context) in the similar, violence- and conflict-affected environment of the Deep South. This will test the efficacy of this methodology in a different geographic area with a different demographic group. Second, this research will expand use of the methodology to an environment characterized by tension and latent conflict (North and Northeast Thailand), where subjects of study are not extremists and extremist organizations, but rather persons and groups involved in destructive or violent acts during periods of heightened unrest. No examples could be found of significant research on this topic in these regions, indicating a void of tested methodological approaches in this regard.

At the outset of the design phase, the research team conducted a lengthy review of relevant literature to better understand the drivers of conflict and factors relevant to community governance and social cohesion in Thailand. Much of the literature and research to date can be characterized as general situational analyses and political-social assessments. Most studies relied on secondary data and interviews of a few key informants. Only a handful included survey data from local populations. The literature predominantly focuses on the conflict in the

## Together Activity Indicator Reference Sheet

Deep South, with little available on the North and Northeast. Research conducted by The Asia Foundation, Engvall and Vajirakachorn are noteworthy, adding much to the base of knowledge and provided a foundation for future studies, including the study presented here (Burke, Adam and Pauline Tweedie. *The Contested Corners of Asia: The Case of Southern Thailand*. The Asia Foundation, 2013. Engvall, Anders. *Trust and Conflict in Southern Thailand*. No Date. [https://editorialexpress.com/cgi-bin/conference/download.cgi?db\\_name=SERC2011&paper\\_id=234](https://editorialexpress.com/cgi-bin/conference/download.cgi?db_name=SERC2011&paper_id=234). Engvall, Anders and Magnus Andersson. *The Dynamics of Conflict in Southern Thailand*. *Asian Economic Papers*, Fall 2014, Volume 13, No 3, pp 169-189. Vajirakachorn, Surasit. *Social Inclusion in Southern Border Provinces of Thailand*. *International Journal of Social Quality*, Winter 2012, Vol. 2, Issue 2, pp 63-80).

### Study Outputs

The specific outputs of the research project include:

1. Identified and tested assumptions regarding the drivers of conflict.
2. Deeper understanding of key factors related to community governance and social cohesion.
3. Clarity on risk factors for destructive and violent actions and of geographic areas and demographic groups that are most vulnerable to being influenced to commit extreme acts.
4. An understanding of messages used to build support and influence people to commit extreme acts, and the channels of communication that they use.

### Methodology

This is a mixed methods study comprising two components: pathways case studies and a perceptions survey.

#### *Pathways Case Studies*

A hallmark of case study research is the use of multiple data sources, a feature which enhances data credibility. Case studies will be constructed from both primary and secondary data sources. A review of literature and discussion among research team members from the research locations led to initial themes and concepts that will guide interviews and revealed cases and events that will be explored during the field interviews. Interviews will be conducted with individuals (“Actors”) with direct experience with destructive and violent acts to better understand their assumptions around pathways and drivers of extremism. Interviews will also be conducted with persons who influenced or recruited others to participate in extreme acts (“Influencers”).

Primary data collection will be done through semi-structured interviews with Actors and their family members, friends and other associates, and with Influencers. Interview data will be used to build detailed case studies of pathways to extreme action and of communication methods and messages used to influence and recruit people to commit extreme acts. Interview respondents will be classified in two groups depending on their knowledge of and proximity to primary subjects. Primary respondents include actual Actors or Influencers. Secondary respondents are friends, family members or associates of Actors (case studies of Influencers will not include interviews with secondary respondents as these are not necessary to understand communication methods and messages). Case studies of Actors will aim to use at least three different respondents per case study to increase the validity of the findings.

Sampling for interviews will be conducted through a snowball sampling methodology. Initial interviews will be conducted with either primary or secondary respondents, depending upon the circumstances and researcher knowledge of the individuals involved. During interviews, researchers will ask respondents for names of other persons they might interview who have special knowledge on the topic. This sampling technique will be continued until enough cases are identified and sufficient interviews are conducted to write coherent and complete case studies. A total of 40 Actor case studies and 10 Influencer case studies will be conducted, including sixteen Actors and four of Influencers in the North Region and in the Northeast Region, and eight Actors and two influencers in the Deep South.

Interviews will be semi-structured, following a basic interview guide. Interviewers will ask follow-up questions and probe for clarification or for additional details. Detailed notes will be compiled immediately following each interview. When possible, interviews will be conducted by a lead interviewer assisted by a note taker.

#### *Perceptions Survey*

The quantitative component of the research project is a survey that explores perceptions and issues of governance, social cohesion and drivers of conflict in three regions of Thailand. The survey will help clarify and

## Together Activity Indicator Reference Sheet

deepen understanding of factors that leave people vulnerable to being influenced to commit destructive or violent actions, and to test prevailing assumptions about the drivers of conflict. It will define more precisely the at-risk populations that *Together* might work with in future activities, in collaboration with Royal Thai Government agencies and local civil society organizations. The survey will be completed using face-to-face interviews of people age 18 to 60 years in eleven provinces following a standard set of questions. The questions help define and provide quantitative measures of the abstract drivers and factors of interest in this study. Care will be taken to ensure that the group of respondents includes representation from youth, women and other marginalized groups, as appropriate.

Research location. The research area includes the North, Northeast and Deep South regions of Thailand. Considering population size, recent history regarding key events related to this study, and locations of research partner universities, the research area in the North was narrowed to the standard government local regions of Upper North 1 and Central Northeast, each comprising four provinces. Comprising just three provinces, it was not necessary to reduce the scope of the research area in the Deep South region. This provides a total of eleven provinces in the research area.

The literature review and expert opinion suggest that the population size of a given area might influence perceptions and the relative importance of drivers of conflict. Thus, districts for surveying within each province were purposively selected to include two with “more population” and two with “less population”. This was accomplished by ordering all districts in a province by population size (age 18 to 60 years), then splitting the districts into two groups – half of the total districts with greater population, and half of the population with less population. For example, consider a province with ten districts. The districts are ordered 1 through 10 by population size. The five districts with the greatest population are placed in one group, the other five with less population are placed in another group. A total of four districts are then randomly selected from each province, including two with greater population and two with smaller population. Following this approach, two sub-districts were selected randomly from the list of all sub-districts in each district (without consideration of population size, which was not relevant at this geographic level).

In each sub-district, a form of systematic random sampling of villages to survey will be used that is most appropriate to the context. In areas where 30 or fewer persons are to be surveyed, these persons will be selected randomly from one village. Where more than 30 persons are to be surveyed, the sample will be drawn from two villages selected randomly from within the sub-district.

Sample size. The eleven provinces in the research area provide the level of analysis for the survey (primary sampling unit). This will enable comparison of findings across provinces and regions. The target respondent sample size for each province was calculated based on a confidence interval of 95% and margin of error of +/- 7.5%. To ensure the minimum sample size is met, the number of interviews conducted is increased by 5% above the amount required to allow for the discarding of inaccurate or incomplete forms (note that the sample sizes indicated in Table 2 below include the additional 5% sample). Thus, a total of 1,980 persons will be surveyed (180 persons in each province).

Respondent Selection. Within each village, survey teams will select individuals to participate in the survey following a standard random process. Research teams will meet with relevant local government authorities to obtain census lists of persons residing in each selected village. The persons on these lists will be numbered sequentially, and a random number generator will then be used to randomly select persons from the list for interviewing. The number of persons randomly selected from the master list will be greater than the number required by the study to ensure adequate names (persons) have been shortlisted in case one or more persons on the shortlist are not available or choose not to participate in the survey interview.

### Design Limitations

The research team designed the research approach and tools with a goal of reducing the impact of standard biases encountered in social science research. Interviews with a broad array of individuals and a review of current literature were used to develop a comprehensive list governance and social cohesion factors and drivers of conflict in Thailand most frequently highlighted by experts and discussed in the literature. The factors and drivers were not evaluated or ranked but were all taken as assumptions which would be tested equally through the research process. This reduced any potential confirmation bias on the part of the research team.

Research tools were structured to reduce common biases that arise from poor design. Leading or double-barreled questions were not used, questionnaires were structured to allow for rapport building before sensitive questions were broached, some questions were reverse coded and others were phrased using neutral language to reduce common response biases. All materials were introduced to research team members and orientation in their use provided in native languages before administration, reducing chances for spontaneous translation

## Together Activity Indicator Reference Sheet

errors. [The research team determined that all research documents (tools) were to be written in Thai Language, with orientation/training discussions in each region using local languages and dialects as appropriate. Interviews of respondents were conducted in either Thai or local language, depending upon the needs of the person interviewed.]

In addition, a random sampling plan was designed to draw as representative a sample as possible given project constraints. Random respondent selection and population quotas guard against selection biases.

Standard practices were followed to ensure the quality of the survey questionnaire. The validity of the questionnaire – the extent to which it measures what it is intended to measure – was established using face validity. The research team consulted a DAI expert on research regarding conflict and violence to discuss and confirm the validity of the factors and associated questions. In addition, the questionnaire to be used in this research project is largely based on and adapted to the Thai context from a similar survey used successfully and which yielded strong results in two separate cases across various demographic groups in the Philippines in 2017 and 2018 (which, in turn, was based on a survey used successfully in Thailand in 2012 under the Sapan Project). This provides assurance that the content of the survey instrument – the questions and variables – represent the domain of factors relevant to this study. Importantly, the questionnaire was constructed and tested through a methodical process by research team members who themselves are experts on the subject matter and are from and work in the various research locations.

Prior to implementing the full survey, the research team pilot tested the questionnaire in each region covered by the research project. A minimum of 20 persons were surveyed in each province, for a total pilot test of 220 persons. This highlighted unclear content and language issues and facilitated the review of the appropriateness and flow of the questions throughout the survey instrument.

Data from the pilot test was used to check the consistency of responses and thus the accuracy in implementing the tool (i.e., Enumerator skill in asking questions and ensuring respondent understanding of questions and response options). The questionnaire includes some negatively phrased questions; responses to these questions were reverse coded and compared for consistency with responses to similar positively phrased questions.

Following the review of pilot test results, the research team revised the questionnaire accordingly and briefed the Enumerators to all changes in content and approach.

The reliability of the questionnaire is also critical and will be tested by the research team following collection of final survey data. While reliability typically refers to the degree to which the results of a survey or measurement can be replicated across time – something not fully applicable for a survey of perceptions that can, and often do, change over time – it also addresses the aspect of the internal consistency of the questionnaire. That is, the extent to which the questions are measuring the same thing. Internal consistency will be estimated using Cronbach's alpha index (note that Cronbach's alpha index was used to measure the consistency of the questionnaire in the Philippines context on two occasions and no problems were found). Should the index score highlight weaknesses in internal consistency of the questionnaire, standard procedures will be followed to assess and, if needed, remove problematic questions (those not correlated closely with others) step-wise until acceptable reliability is obtained.

### Confidentiality and Informed Consent

*Together* and the University partners will implement strict measures to ensure respondent confidentiality. At the time of survey and interviews, respondents will be given a unique number and all documents associated with that respondent will use only the respondent number for identification. If names of specific individuals are discussed in a case study interview and end up in transcripts, names will immediately be redacted and replaced with a pseudonym or a number. As the case studies will have detailed personal information such that deductive disclosure is a concern, full case studies will not be shared with persons outside the research team or published publicly. Anonymous quotes and details can be used in the final report as the danger of deductive disclosure is minimal. Informed consent shall be obtained orally from each participant and participants will be given the option of not participating in the study as part of the informed consent process.

Do no harm. The research team designed the questionnaire and implementation approach using best practices for surveys in conflict areas and which cover sensitive issues. The pilot test confirmed that no questions were too sensitive or stressful for respondents, and that none would compromise their safety. Data will be collected by Enumerators who are from the research locations, who speak local languages and are closely familiar with the local context, helping to ease any anxieties that respondents may feel when discussing sensitive issues. Enumerators will be trained to observe for respondent discomfort, pain or anxiety, or if traumatic memories and



## Together Activity Indicator Reference Sheet

emotions are stirred during the interview and stop the interview if such conditions arise. The security of respondents and research staff is paramount. Survey tasks will not be conducted in areas known to be dangerous, interviews will be stopped and rescheduled or cancelled if security becomes tenuous during implementation.

### Data Quality Control, Processing and Analysis

Data quality begins with sound questionnaires and interview guidelines, and proper training of staff who will collect data in the field. The research team conducted separate training courses for Enumerators who will implement the perceptions survey, and for Interviewers who will complete the case studies. This ensures that this staff understand the overall research project and its objectives, their roles and responsibilities in collecting field data.

During the field survey, Field Supervisors will be present to assist the Enumerators to address problems that might arise and to observe the conduct of the survey to ensure consistency in approach and application of the survey instrument. Field Supervisors will directly observe a minimum of 10% of the survey interviews conducted in their designated research area to ensure all survey standard approaches are being followed as required.

As surveys are completed, the Field Supervisors and Survey Research Managers will review all data capture forms to ensure they were completed accurately, following guidelines presented in the Questionnaire Instructions document. Following their review, university partners will send all forms to Khon Kaen University for processing and statistical analysis tasks. Having a central location for these tasks ensures consistency in approach regarding the acceptance or rejection of data collected in each province, efficient data entry and application of standard and appropriate statistical analysis techniques.

Prior to data entry, research staff at Khon Kaen University will review all survey forms to ensure they are complete and readable. Forms missing data on respondent location or age, or with errors on 5 or more questions will be rejected (e.g., questions having none or more than two responses). A Survey Research Manager will oversee entry of survey data into the survey database. A minimum of 10% of each Data Entry Clerk's work will be double-entered and assessed to detect and minimize data entry errors.

Khon Kaen University-based research team members will complete all statistical analysis tasks, in close coordination with *Together* and the other partner universities.

Initial survey data analysis will focus on: (1) the identification and testing of assumptions regarding the drivers of conflict, and (2) understanding key issues related to governance and social cohesion in the research area. Regression analysis using composite indices for each of the assumed drivers will help identify factors associated with support for extreme action or ideas. For the second output, descriptive statistics and simple correlations and significance tests will be used to explore the data. The analysis will compare results across locations, sex, religion, and age cohort, as appropriate, to identify key findings that can inform targeted programming.

Analysis of case study data will proceed through two phases: building case studies and comparative analysis. As interviews are completed, case studies will be written based on primary and secondary interviews. Individual case studies will be 3-4 pages in length and include all pertinent details discovered data collection.

After the case studies are completed, comparative analysis will be conducted to describe the most common pathways to destructive or violent actions, identify common themes and highlight significant differences in the identified pathways. Case studies will be coded based on a coding matrix developed by the research group. Significant similarities and differences across different pathways will be identified and explored, and the most common pathways will be described in detail.

As the final step in the analysis of data, the research team will integrate the qualitative findings with those of the quantitative survey to help uncover or highlight causality between drivers of conflict and the destructive or extreme actions and extreme ideas. That is, the findings will not just rely on the results of regression analysis, but rather they will pull together those results with the studies of personal life experiences of the Actors interviewed to see how the factors “work” beyond just the correlations data.

**Unit of Measurement:** Compound variable

**Disaggregation(s):** Sex (male and female)

**Data Collection:** Survey using standard approach and tools

**Data Source(s):** Individual perception survey

**Reporting Frequency:** Data will be reported to USAID on/about June 2019 (baseline), October 2020, and September 2022 (beginning, middle and end of Activity)

## Together Activity Indicator Reference Sheet

<b>DATA QUALITY</b>
<b>Date of Previous Data Quality Assessment &amp; Reviewer:</b> None (new Activity and Indicator)
<b>Date of the Next Data Quality Assessment:</b> October 2020
<b>PLAN FOR DATA USE</b>
<b>Known Data Limitations:</b> There are no known data limitations
<b>Plan for Data Use:</b> Reporting; review of Activity strategy, approach and actions; raising awareness among stakeholders of outcomes of their actions (i.e., promote stakeholder learning)
<b>CHANGES TO INDICATOR</b>
<b>Change to Indicator:</b> None
<b>Other Notes:</b> None
<p><b>This sheet was last updated on: 7 May 2020, by <i>Together</i> COP, and was last reviewed &amp; approved</b>  on: _____, by: _____</p>

## Together Activity Indicator Reference Sheet

<b>Indicator No. &amp; Name: 2.1. CSO Advocacy Capacity Index</b>
<b>DO No. &amp; Name:</b> DO 1: Regional Institutions' Ability to Promote Sustainable and Inclusive Regional Growth Increased
<b>IR No. &amp; Name:</b> IR 1.3: Good Governance Strengthened
<b>Sub-IR No. &amp; Name:</b> Sub-IR 1.3.2: Increased Capacity of Civil Society and Private Citizens to Participate Effective in Public Decision Making
<b>No. &amp; Name of Activity(s):</b> 72048618CA00008, Together
<b>No. &amp; Name of Action(s)/Intervention(s):</b> Objective 2. Improve capacity of civil society to advocate for public interest, especially underrepresented groups to find common solutions with government using non-violent means
<b>Geographic Coverage:</b> Thailand
<b>Origin of indicator:</b> Current Foreign Assistance Framework ("F") indicator ____ No. _____, for reporting year(s) 2020-2022, program area/element/sub-element _____; Existing PMP Indicator ____ No. _____; Existing IR/Project Indicator ____ No. _____; USAID Global/Regional Indicator ____ (specify _____); Other (specify): Custom Outcome
<b>Is this indicator subject to a data quality assessment (DQA) by USAID?</b> Yes ____ No ____
<b>DESCRIPTION</b>
<b>Indicator Definition:</b> <p>"CSO" (civil society organization) refers to those groups working on issues associated with governance, social cohesion and latent and violent conflict. CSO is defined as occupants of the space between the state and individuals, normally interest groups with varying degrees of accountability to their members. Examples include NGOs, religious organizations, professional associations, trade unions, co-operatives, voluntary and self-help groups, youth groups, foundations, the media, community-based organizations, legal and human rights groups, and university and research organizations.</p> <p>"Advocacy capacity index" refers to a compound variable comprising a range of factors, for example: research, consultation, alternate policy formulation, public education, coalition and network, engagement of policy makers, institutionalizing advocacy, and internal governance (final factors to be determined following selection of CSO partners and determination of core factors with them). CSOs will be assessed against each factor and scored using a scale from 0 to 5, with 0 being the lowest score.</p> <p>The factor scores of the "advocacy capacity index" are derived from structured interviews with selected CSOs and relevant stakeholders on their perceptions and opinions of the CSO and of its activities at the outset, middle and end of the Activity. An increase in the value of the index over time indicates positive progress.</p>
<b>Unit of Measurement:</b> Compound variable
<b>Disaggregation(s):</b> None
<b>Data Collection:</b> Structured interviews using standard approach, scoring method and tools
<b>Data Source(s):</b> CSOs and relevant stakeholders
<b>Reporting Frequency:</b> Data will be reported to USAID on/about February 2020 (baseline), June 2021, and September 2022
<b>DATA QUALITY</b>
<b>Date of Previous Data Quality Assessment &amp; Reviewer:</b> None (new Activity and Indicator)
<b>Date of the Next Data Quality Assessment:</b> August 2020
<b>PLAN FOR DATA USE</b>
<b>Known Data Limitations:</b> There are no known data limitations
<b>Plan for Data Use:</b> Reporting; review of Activity strategy, approach and actions; raising awareness among stakeholders of outcomes of their actions (i.e., promote stakeholder learning)
<b>CHANGES TO INDICATOR</b>
<b>Change to Indicator:</b> None
<b>Other Notes:</b> None
<b>This sheet was last updated on: 7 May 2020, by Together COP, and was last reviewed &amp; approved on: _____, by: _____</b>

## Together Activity Indicator Reference Sheet

<b>Indicator No. &amp; Name: 3.1. Perception of "Community Marginalization and Discrimination" in sample of focus community members</b>
<b>DO No. &amp; Name:</b> DO 1: Regional Institutions' Ability to Promote Sustainable and Inclusive Regional Growth Increased
<b>IR No. &amp; Name:</b> IR 1.3: Good Governance Strengthened
<b>Sub-IR No. &amp; Name:</b> Sub-IR 1.3.2: Increased Capacity of Civil Society and Private Citizens to Participate Effectively in Public Decision Making
<b>No. &amp; Name of Activity(s):</b> 72048618CA00008, Together
<b>No. &amp; Name of Action(s)/Intervention(s):</b> Objective 3. Improve relations and constructive dialogue among citizens of different backgrounds
<b>Geographic Coverage:</b> Thailand
<b>Origin of indicator:</b> Current Foreign Assistance Framework ("F") indicator ____ No. _____, for reporting year(s) 2020-2022, program area/element/sub-element _____; Existing PMP Indicator ____ No. _____; Existing IR/Project Indicator ____ No. _____; USAID Global/Regional Indicator ____ (specify _____); Other (specify): Custom Outcome
<b>Is this indicator subject to a data quality assessment (DQA) by USAID?</b> Yes ___ No ___
<b>DESCRIPTION</b>
<p><b>Indicator Definition:</b></p> <p>"Community Marginalization and Discrimination" refers to a compound variable developed in the <i>Together</i> Community Governance and Drivers of Conflict Research Project. It captures the perceptions of respondents regarding the extent to which they feel their communities are marginalized by or discriminated against by another community or group.</p> <p>"Sample of focus community members" refers to a random sample of people in all project geographic locations during the period of <i>Together</i> implementation (e.g., all districts or provinces). The sample size is calculated from the total number of persons age 18-60 years in the location and provides a margin of error of +/- 7.5% at the 95% confidence interval. The sample is representative regarding the sex of respondents.</p> <p>The value of the compound variable "Community Marginalization and Discrimination" is derived from responses to 6 survey questions:</p> <p>14b. To what extent do you agree or disagree with the following statements? You can respond strongly agree, agree somewhat, disagree somewhat, or strongly disagree. Local government responds to the needs and priorities of my community.</p> <p>15a. To what extent do you agree or disagree with the following statements? You can respond strongly agree, agree somewhat, disagree somewhat, or strongly disagree. My community is under threat.</p> <p>15b. To what extent do you agree or disagree with the following statements? You can respond strongly agree, agree somewhat, disagree somewhat, or strongly disagree. My community has historically suffered more than most other communities.</p> <p>15i. To what extent do you agree or disagree with the following statements? You can respond strongly agree, agree somewhat, disagree somewhat, or strongly disagree. My groups are treated equally in this community.</p> <p>15l. To what extent do you agree or disagree with the following statements? You can respond strongly agree, agree somewhat, disagree somewhat, or strongly disagree. Your community is able to restore and preserve customs, local wisdom, arts or traditions.</p> <p>19g. Next, I would like to ask you some questions about conditions in the community in which you are now living. You can respond strongly agree, agree somewhat, disagree somewhat, or strongly disagree. My community has limited access to financial resources, development projects and government services.</p> <p>Survey data on the perceptions and opinions of community members will be collected in Chiang Mai, Khon Kaen, Yala, Pattani and Narathiwat at the outset (March 2019), middle (about June 2020) and end of the Activity (about July 2022). An increase in the value of the variable over time indicates positive progress (increased perception of consensus orientation in making decisions). <i>Together</i> will collect data and calculate variable values in March 2019, about June 2020 and about July 2022. Findings will be compared to discern whether there has been a significant change in the variable over time.</p>

## Together Activity Indicator Reference Sheet

### **Additional background information on the Community Governance and Drivers of Conflict Research Project**

During November 2018 to January 2019, a research partnership comprising the USAID-funded *Together* Project (implemented by DAI Global, LLC), Maejo University, Khon Kaen University, Yala Rajabhat University, Prince of Songkla University–Pattani Campus and Princess of Naradhiwas University (here after the “research team”) designed a mixed methods research project to explore issues of governance, social cohesion and conflict in the North, Northeast and Deep South regions of Thailand. The results of the study will be used in designing activities to strengthen citizen-government engagement and support community-community interaction and to assess the impact of these interventions. The research project includes a quantitative survey of a representative sample of residents in select provinces and interviews of a purposive sample of key actors and influential persons who are well-placed to provide personal insights and share experiences on issues of governance, social cohesion and conflict in the study area.

The objective of this research is to provide a better and more nuanced understanding of community governance and social cohesion issues, drivers of conflict and the pathways through which individuals become vulnerable to and involved with destructive or violent actions.

This objective will be achieved through a mixed methods research approach with qualitative and quantitative components. The first step in the research design process was to compile a list of key factors that underpin strong governance and social cohesion, and those assumed to be drivers of conflict. The research team did this through a close review of available research literature, consultation with experts on governance and conflict in Thailand, and discussions with academics, government officials and civil society leaders in the research area. To understand how the drivers of conflict form pathways to extreme actions, detailed case studies will be conducted through semi-structured interviews of people who have been personally involved in destructive or violent actions, members of their families or close friends, and people who have actively encouraged and influenced others to commit such actions.

The research also includes a quantitative survey of perceptions to enable a test of prevailing assumptions about the drivers of conflict, and to identify risk factors and define at-risk populations in the research area. The research team will collect a stratified random sample of 1,980 persons age 18 to 60 years from 11 provinces spread across the North, Northeast and Deep South regions of Thailand. The perceptions survey and case study interviews, and analysis of resulting data, will be conducted over a period of about three months, during March to May 2019.

The methodology proposed for this research project builds directly on the method developed and employed by Casey and Pottebaum in the Philippines (Casey, Kevin and David Pottebaum. Youth and Violent Extremism in Mindanao, Philippines: A Mixed-Methods Design for Testing Assumptions about Drivers of Extremism. DAI Global, LLC, Bethesda, Maryland, USA, August 2018. <https://www.dai.com/uploads/Youth%20and%20Violent%20Extremism%20in%20Mindanao,%20Philippines.pdf>). As they indicate in their paper, the field of development-based conflict and extremism research is very much in its infancy. Recent efforts by Hedayah and USIP’s RESOLVE have provided a needed focus on methodology in the field (RESOLVE Network. Building Consensus and Setting Priorities for Research on Violent Extremism: Working Paper on Findings from Expert Consultations. United States Institute of Peace, September 2016). While these and other efforts have improved methodologies recently, there remains an overreliance on secondary sources and a lack of empirical data that can be used in statistical and inferential analyses. As a result, there remain many untested assumptions, particularly regarding factors driving conflict and extremism.

Casey and Pottebaum describe two gaps in the methodology that they suggest are filled by their mixed-methods approach. First is a lack of qualitative research focusing on the experience of extremists themselves. This results in a lack of clear understanding of the process of radicalization and of how extremists experience the drivers of conflict themselves. Research needs to be more grounded in the experiences of extremists to properly understand the dynamics of radicalization. The second gap highlighted by Casey and Pottebaum is the absence of inferential statistics and quantitative studies that can reveal how assumed drivers of conflict and extremism interact and correlate with social, political and economic factors. Quantitative studies tend to take the form of public opinion polling and include no effort to explore underlying relationships that may shape opinion.

This research project will build on the work of Casey and Pottebaum in two ways. First, it will replicate the method (adapted for the local context) in the similar, violence- and conflict-affected environment of the Deep South. This will test the efficacy of this methodology in a different geographic area with a different demographic group. Second, this research will expand use of the methodology to an environment characterized by tension and latent conflict (North and Northeast Thailand), where subjects of study are not

## Together Activity Indicator Reference Sheet

extremists and extremist organizations, but rather persons and groups involved in destructive or violent acts during periods of heightened unrest. No examples could be found of significant research on this topic in these regions, indicating a void of tested methodological approaches in this regard.

At the outset of the design phase, the research team conducted a lengthy review of relevant literature to better understand the drivers of conflict and factors relevant to community governance and social cohesion in Thailand. Much of the literature and research to date can be characterized as general situational analyses and political-social assessments. Most studies relied on secondary data and interviews of a few key informants. Only a handful included survey data from local populations. The literature predominantly focuses on the conflict in the Deep South, with little available on the North and Northeast. Research conducted by The Asia Foundation, Engvall and Vajirakachorn are noteworthy, adding much to the base of knowledge and provided a foundation for future studies, including the study presented here (Burke, Adam and Pauline Tweedie. *The Contested Corners of Asia: The Case of Southern Thailand*. The Asia Foundation, 2013. Engvall, Anders. *Trust and Conflict in Southern Thailand*. No Date. [https://editorialexpress.com/cgi-bin/conference/download.cgi?db\\_name=SERC2011&paper\\_id=234](https://editorialexpress.com/cgi-bin/conference/download.cgi?db_name=SERC2011&paper_id=234). Engvall, Anders and Magnus Andersson. *The Dynamics of Conflict in Southern Thailand*. *Asian Economic Papers*, Fall 2014, Volume 13, No 3, pp 169-189. Vajirakachorn, Surasit. *Social Inclusion in Southern Border Provinces of Thailand*. *International Journal of Social Quality*, Winter 2012, Vol. 2, Issue 2, pp 63-80).

### Study Outputs

The specific outputs of the research project include:

1. Identified and tested assumptions regarding the drivers of conflict.
2. Deeper understanding of key factors related to community governance and social cohesion.
3. Clarity on risk factors for destructive and violent actions and of geographic areas and demographic groups that are most vulnerable to being influenced to commit extreme acts.
4. An understanding of messages used to build support and influence people to commit extreme acts, and the channels of communication that they use.

### Methodology

This is a mixed methods study comprising two components: pathways case studies and a perceptions survey.

#### *Pathways Case Studies*

A hallmark of case study research is the use of multiple data sources, a feature which enhances data credibility. Case studies will be constructed from both primary and secondary data sources. A review of literature and discussion among research team members from the research locations led to initial themes and concepts that will guide interviews and revealed cases and events that will be explored during the field interviews. Interviews will be conducted with individuals (“Actors”) with direct experience with destructive and violent acts to better understand their assumptions around pathways and drivers of extremism. Interviews will also be conducted with persons who influenced or recruited others to participate in extreme acts (“Influencers”).

Primary data collection will be done through semi-structured interviews with Actors and their family members, friends and other associates, and with Influencers. Interview data will be used to build detailed case studies of pathways to extreme action and of communication methods and messages used to influence and recruit people to commit extreme acts. Interview respondents will be classified in two groups depending on their knowledge of and proximity to primary subjects. Primary respondents include actual Actors or Influencers. Secondary respondents are friends, family members or associates of Actors (case studies of Influencers will not include interviews with secondary respondents as these are not necessary to understand communication methods and messages). Case studies of Actors will aim to use at least three different respondents per case study to increase the validity of the findings.

Sampling for interviews will be conducted through a snowball sampling methodology. Initial interviews will be conducted with either primary or secondary respondents, depending upon the circumstances and researcher knowledge of the individuals involved. During interviews, researchers will ask respondents for names of other persons they might interview who have special knowledge on the topic. This sampling technique will be continued until enough cases are identified and sufficient interviews are conducted to write coherent and complete case studies. A total of 40 Actor case studies and 10 Influencer case studies will be conducted, including sixteen Actors and four of Influencers in the North Region and in the Northeast Region, and eight

## Together Activity Indicator Reference Sheet

Actors and two influencers in the Deep South.

Interviews will be semi-structured, following a basic interview guide. Interviewers will ask follow-up questions and probe for clarification or for additional details. Detailed notes will be compiled immediately following each interview. When possible, interviews will be conducted by a lead interviewer assisted by a note taker.

### *Perceptions Survey*

The quantitative component of the research project is a survey that explores perceptions and issues of governance, social cohesion and drivers of conflict in three regions of Thailand. The survey will help clarify and deepen understanding of factors that leave people vulnerable to being influenced to commit destructive or violent actions, and to test prevailing assumptions about the drivers of conflict. It will define more precisely the at-risk populations that *Together* might work with in future activities, in collaboration with Royal Thai Government agencies and local civil society organizations. The survey will be completed using face-to-face interviews of people age 18 to 60 years in eleven provinces following a standard set of questions. The questions help define and provide quantitative measures of the abstract drivers and factors of interest in this study. Care will be taken to ensure that the group of respondents includes representation from youth, women and other marginalized groups, as appropriate.

Research location. The research area includes the North, Northeast and Deep South regions of Thailand. Considering population size, recent history regarding key events related to this study, and locations of research partner universities, the research area in the North was narrowed to the standard government local regions of Upper North 1 and Central Northeast, each comprising four provinces. Comprising just three provinces, it was not necessary to reduce the scope of the research area in the Deep South region. This provides a total of eleven provinces in the research area.

The literature review and expert opinion suggest that the population size of a given area might influence perceptions and the relative importance of drivers of conflict. Thus, districts for surveying within each province were purposively selected to include two with “more population” and two with “less population”. This was accomplished by ordering all districts in a province by population size (age 18 to 60 years), then splitting the districts into two groups – half of the total districts with greater population, and half of the population with less population. For example, consider a province with ten districts. The districts are ordered 1 through 10 by population size. The five districts with the greatest population are placed in one group, the other five with less population are placed in another group. A total of four districts are then randomly selected from each province, including two with greater population and two with smaller population. Following this approach, two sub-districts were selected randomly from the list of all sub-districts in each district (without consideration of population size, which was not relevant at this geographic level).

In each sub-district, a form of systematic random sampling of villages to survey will be used that is most appropriate to the context. In areas where 30 or fewer persons are to be surveyed, these persons will be selected randomly from one village. Where more than 30 persons are to be surveyed, the sample will be drawn from two villages selected randomly from within the sub-district.

Sample size. The eleven provinces in the research area provide the level of analysis for the survey (primary sampling unit). This will enable comparison of findings across provinces and regions. The target respondent sample size for each province was calculated based on a confidence interval of 95% and margin of error of +/- 7.5%. To ensure the minimum sample size is met, the number of interviews conducted is increased by 5% above the amount required to allow for the discarding of inaccurate or incomplete forms (note that the sample sizes indicated in Table 2 below include the additional 5% sample). Thus, a total of 1,980 persons will be surveyed (180 persons in each province).

Respondent Selection. Within each village, survey teams will select individuals to participate in the survey following a standard random process. Research teams will meet with relevant local government authorities to obtain census lists of persons residing in each selected village. The persons on these lists will be numbered sequentially, and a random number generator will then be used to randomly select persons from the list for interviewing. The number of persons randomly selected from the master list will be greater than the number required by the study to ensure adequate names (persons) have been shortlisted in case one or more persons on the shortlist are not available or choose not to participate in the survey interview.

### Design Limitations

The research team designed the research approach and tools with a goal of reducing the impact of standard biases encountered in social science research. Interviews with a broad array of individuals and a review of

## Together Activity Indicator Reference Sheet

current literature were used to develop a comprehensive list governance and social cohesion factors and drivers of conflict in Thailand most frequently highlighted by experts and discussed in the literature. The factors and drivers were not evaluated or ranked but were all taken as assumptions which would be tested equally through the research process. This reduced any potential confirmation bias on the part of the research team.

Research tools were structured to reduce common biases that arise from poor design. Leading or double-barreled questions were not used, questionnaires were structured to allow for rapport building before sensitive questions were broached, some questions were reverse coded and others were phrased using neutral language to reduce common response biases. All materials were introduced to research team members and orientation in their use provided in native languages before administration, reducing chances for spontaneous translation errors. [The research team determined that all research documents (tools) were to be written in Thai Language, with orientation/training discussions in each region using local languages and dialects as appropriate. Interviews of respondents were conducted in either Thai or local language, depending upon the needs of the person interviewed.]

In addition, a random sampling plan was designed to draw as representative a sample as possible given project constraints. Random respondent selection and population quotas guard against selection biases.

Standard practices were followed to ensure the quality of the survey questionnaire. The validity of the questionnaire – the extent to which it measures what it is intended to measure – was established using face validity. The research team consulted a DAI expert on research regarding conflict and violence to discuss and confirm the validity of the factors and associated questions. In addition, the questionnaire to be used in this research project is largely based on and adapted to the Thai context from a similar survey used successfully and which yielded strong results in two separate cases across various demographic groups in the Philippines in 2017 and 2018 (which, in turn, was based on a survey used successfully in Thailand in 2012 under the Sapan Project). This provides assurance that the content of the survey instrument – the questions and variables – represent the domain of factors relevant to this study. Importantly, the questionnaire was constructed and tested through a methodical process by research team members who themselves are experts on the subject matter and are from and work in the various research locations.

Prior to implementing the full survey, the research team pilot tested the questionnaire in each region covered by the research project. A minimum of 20 persons were surveyed in each province, for a total pilot test of 220 persons. This highlighted unclear content and language issues and facilitated the review of the appropriateness and flow of the questions throughout the survey instrument.

Data from the pilot test was used to check the consistency of responses and thus the accuracy in implementing the tool (i.e., Enumerator skill in asking questions and ensuring respondent understanding of questions and response options). The questionnaire includes some negatively phrased questions; responses to these questions were reverse coded and compared for consistency with responses to similar positively phrased questions.

Following the review of pilot test results, the research team revised the questionnaire accordingly and briefed the Enumerators to all changes in content and approach.

The reliability of the questionnaire is also critical and will be tested by the research team following collection of final survey data. While reliability typically refers to the degree to which the results of a survey or measurement can be replicated across time – something not fully applicable for a survey of perceptions that can, and often do, change over time – it also addresses the aspect of the internal consistency of the questionnaire. That is, the extent to which the questions are measuring the same thing. Internal consistency will be estimated using Cronbach's alpha index (note that Cronbach's alpha index was used to measure the consistency of the questionnaire in the Philippines context on two occasions and no problems were found). Should the index score highlight weaknesses in internal consistency of the questionnaire, standard procedures will be followed to assess and, if needed, remove problematic questions (those not correlated closely with others) step-wise until acceptable reliability is obtained.

### Confidentiality and Informed Consent

*Together* and the University partners will implement strict measures to ensure respondent confidentiality. At the time of survey and interviews, respondents will be given a unique number and all documents associated with that respondent will use only the respondent number for identification. If names of specific individuals are discussed in a case study interview and end up in transcripts, names will immediately be redacted and replaced with a pseudonym or a number. As the case studies will have detailed personal information such that deductive disclosure is a concern, full case studies will not be shared with persons outside the research team



## Together Activity Indicator Reference Sheet

or published publicly. Anonymous quotes and details can be used in the final report as the danger of deductive disclosure is minimal. Informed consent shall be obtained orally from each participant and participants will be given the option of not participating in the study as part of the informed consent process.

Do no harm. The research team designed the questionnaire and implementation approach using best practices for surveys in conflict areas and which cover sensitive issues. The pilot test confirmed that no questions were too sensitive or stressful for respondents, and that none would compromise their safety. Data will be collected by Enumerators who are from the research locations, who speak local languages and are closely familiar with the local context, helping to ease any anxieties that respondents may feel when discussing sensitive issues. Enumerators will be trained to observe for respondent discomfort, pain or anxiety, or if traumatic memories and emotions are stirred during the interview and stop the interview if such conditions arise. The security of respondents and research staff is paramount. Survey tasks will not be conducted in areas known to be dangerous, interviews will be stopped and rescheduled or cancelled if security becomes tenuous during implementation.

### Data Quality Control, Processing and Analysis

Data quality begins with sound questionnaires and interview guidelines, and proper training of staff who will collect data in the field. The research team conducted separate training courses for Enumerators who will implement the perceptions survey, and for Interviewers who will complete the case studies. This ensures that this staff understand the overall research project and its objectives, their roles and responsibilities in collecting field data.

During the field survey, Field Supervisors will be present to assist the Enumerators to address problems that might arise and to observe the conduct of the survey to ensure consistency in approach and application of the survey instrument. Field Supervisors will directly observe a minimum of 10% of the survey interviews conducted in their designated research area to ensure all survey standard approaches are being followed as required.

As surveys are completed, the Field Supervisors and Survey Research Managers will review all data capture forms to ensure they were completed accurately, following guidelines presented in the Questionnaire Instructions document. Following their review, university partners will send all forms to Khon Kaen University for processing and statistical analysis tasks. Having a central location for these tasks ensures consistency in approach regarding the acceptance or rejection of data collected in each province, efficient data entry and application of standard and appropriate statistical analysis techniques.

Prior to data entry, research staff at Khon Kaen University will review all survey forms to ensure they are complete and readable. Forms missing data on respondent location or age, or with errors on 5 or more questions will be rejected (e.g., questions having none or more than two responses). A Survey Research Manager will oversee entry of survey data into the survey database. A minimum of 10% of each Data Entry Clerk's work will be double-entered and assessed to detect and minimize data entry errors. Khon Kaen University-based research team members will complete all statistical analysis tasks, in close coordination with Together and the other partner universities.

Initial survey data analysis will focus on: (1) the identification and testing of assumptions regarding the drivers of conflict, and (2) understanding key issues related to governance and social cohesion in the research area. Regression analysis using composite indices for each of the assumed drivers will help identify factors associated with support for extreme action or ideas. For the second output, descriptive statistics and simple correlations and significance tests will be used to explore the data. The analysis will compare results across locations, sex, religion, and age cohort, as appropriate, to identify key findings that can inform targeted programming.

Analysis of case study data will proceed through two phases: building case studies and comparative analysis. As interviews are completed, case studies will be written based on primary and secondary interviews. Individual case studies will be 3-4 pages in length and include all pertinent details discovered data collection.

After the case studies are completed, comparative analysis will be conducted to describe the most common pathways to destructive or violent actions, identify common themes and highlight significant differences in the identified pathways. Case studies will be coded based on a coding matrix developed by the research group. Significant similarities and differences across different pathways will be identified and explored, and the most common pathways will be described in detail.

As the final step in the analysis of data, the research team will integrate the qualitative findings with those of

## Together Activity Indicator Reference Sheet

the quantitative survey to help uncover or highlight causality between drivers of conflict and the destructive or extreme actions and extreme ideas. That is, the findings will not just rely on the results of regression analysis, but rather they will pull together those results with the studies of personal life experiences of the Actors interviewed to see how the factors “work” beyond just the correlations data.
<b>Unit of Measurement:</b> Compound variable
<b>Disaggregation(s):</b> Sex (male and female)
<b>Data Collection:</b> Survey using standard approach and tools
<b>Data Source(s):</b> Individual perception survey
<b>Reporting Frequency:</b> Data will be reported to USAID on/about June 2019 (baseline), October 2020, and September 2022 (beginning, middle and end of Activity)
<b>DATA QUALITY</b>
<b>Date of Previous Data Quality Assessment &amp; Reviewer:</b> None (new Activity and Indicator)
<b>Date of the Next Data Quality Assessment:</b> October 2020
<b>PLAN FOR DATA USE</b>
<b>Known Data Limitations:</b> There are no known data limitations
<b>Plan for Data Use:</b> Reporting; review of Activity strategy, approach and actions; raising awareness among stakeholders of outcomes of their actions (i.e., promote stakeholder learning)
<b>CHANGES TO INDICATOR</b>
<b>Change to Indicator:</b> None
<b>Other Notes:</b> None
<b>This sheet was last updated on: 7 May 2020, by Together COP, and was last reviewed &amp; approved on: _____, by: _____</b>

## Together Activity Indicator Reference Sheet

<b>Indicator No. &amp; Name: 3.2. Perception of "Self-efficacy" among sample of focus community members</b>
<b>DO No. &amp; Name:</b> DO 1: Regional Institutions' Ability to Promote Sustainable and Inclusive Regional Growth Increased
<b>IR No. &amp; Name:</b> IR 1.3: Good Governance Strengthened
<b>Sub-IR No. &amp; Name:</b> Sub-IR 1.3.2: Increased Capacity of Civil Society and Private Citizens to Participate Effective in Public Decision Making
<b>No. &amp; Name of Activity(s):</b> 72048618CA00008, Together
<b>No. &amp; Name of Action(s)/Intervention(s):</b> Objective 3. Improve relations and constructive dialogue among citizens of different backgrounds
<b>Geographic Coverage:</b> Thailand
<b>Origin of indicator:</b> Current Foreign Assistance Framework ("F") indicator ____ No. _____, for reporting year(s) 2020-2022, program area/element/sub-element _____; Existing PMP Indicator ____ No. _____; Existing IR/Project Indicator ____ No. _____; USAID Global/Regional Indicator ____ (specify _____); Other (specify): Custom Outcome
<b>Is this indicator subject to a data quality assessment (DQA) by USAID?</b> Yes ___ No ___
<b>DESCRIPTION</b>
<p><b>Indicator Definition:</b></p> <p>"Self-efficacy" refers to a compound variable developed in the <i>Together</i> Community Governance and Drivers of Conflict Research Project. It captures the perceptions of respondents regarding the extent to which they feel empowered and in control of their lives.</p> <p>"Sample of focus community members" refers to a random sample of people in all project geographic locations during the period of <i>Together</i> implementation (e.g., all districts or provinces). The sample size is calculated from the total number of persons age 18-60 years in the location and provides a margin of error of +/- 7.5% at the 95% confidence interval. The sample is representative regarding the sex of respondents.</p> <p>The value of the compound variable "Self-efficacy" is derived from responses to 5 survey questions:</p> <p>14e. To what extent do you agree or disagree with the following statements? You can respond strongly agree, agree somewhat, disagree somewhat, or strongly disagree. If a person does well at school and works hard, they will be successful in life.</p> <p>14f. To what extent do you agree or disagree with the following statements? You can respond strongly agree, agree somewhat, disagree somewhat, or strongly disagree. If a person perseveres and endeavors, they will be successful in life.</p> <p>14i. To what extent do you agree or disagree with the following statements? You can respond strongly agree, agree somewhat, disagree somewhat, or strongly disagree. I feel like my life has purpose.</p> <p>14j. To what extent do you agree or disagree with the following statements? You can respond strongly agree, agree somewhat, disagree somewhat, or strongly disagree. In general, my life seems boring.</p> <p>14k. To what extent do you agree or disagree with the following statements? You can respond strongly agree, agree somewhat, disagree somewhat, or strongly disagree. I am in control of my own life.</p> <p>Survey data on the perceptions and opinions of community members will be collected in Chiang Mai, Khon Kaen, Yala, Pattani and Narathiwat at the outset (March 2019), middle (about June 2020) and end of the Activity (about July 2022). An increase in the value of the variable over time indicates positive progress (increased perception of consensus orientation in making decisions). <i>Together</i> will collect data and calculate variable values in March 2019, about June 2020 and about July 2022. Findings will be compared to discern whether there has been a significant change in the variable over time.</p> <p><b>Additional background information on the Community Governance and Drivers of Conflict Research Project</b></p> <p>During November 2018 to January 2019, a research partnership comprising the USAID-funded <i>Together</i> Project (implemented by DAI Global, LLC), Maejo University, Khon Kaen University, Yala Rajabhat University, Prince of Songkla University–Pattani Campus and Princess of Naradhiwas University (here after the "research team") designed a mixed methods research project to explore issues of governance, social cohesion and conflict in the North, Northeast and Deep South regions of Thailand. The results of the study will be used in</p>

## Together Activity Indicator Reference Sheet

designing activities to strengthen citizen-government engagement and support community-community interaction and to assess the impact of these interventions. The research project includes a quantitative survey of a representative sample of residents in select provinces and interviews of a purposive sample of key actors and influential persons who are well-placed to provide personal insights and share experiences on issues of governance, social cohesion and conflict in the study area.

The objective of this research is to provide a better and more nuanced understanding of community governance and social cohesion issues, drivers of conflict and the pathways through which individuals become vulnerable to and involved with destructive or violent actions.

This objective will be achieved through a mixed methods research approach with qualitative and quantitative components. The first step in the research design process was to compile a list of key factors that underpin strong governance and social cohesion, and those assumed to be drivers of conflict. The research team did this through a close review of available research literature, consultation with experts on governance and conflict in Thailand, and discussions with academics, government officials and civil society leaders in the research area. To understand how the drivers of conflict form pathways to extreme actions, detailed case studies will be conducted through semi-structured interviews of people who have been personally involved in destructive or violent actions, members of their families or close friends, and people who have actively encouraged and influenced others to commit such actions.

The research also includes a quantitative survey of perceptions to enable a test of prevailing assumptions about the drivers of conflict, and to identify risk factors and define at-risk populations in the research area. The research team will collect a stratified random sample of 1,980 persons age 18 to 60 years from 11 provinces spread across the North, Northeast and Deep South regions of Thailand. The perceptions survey and case study interviews, and analysis of resulting data, will be conducted over a period of about three months, during March to May 2019.

The methodology proposed for this research project builds directly on the method developed and employed by Casey and Pottebaum in the Philippines (Casey, Kevin and David Pottebaum. Youth and Violent Extremism in Mindanao, Philippines: A Mixed-Methods Design for Testing Assumptions about Drivers of Extremism. DAI Global, LLC, Bethesda, Maryland, USA, August 2018. <https://www.dai.com/uploads/Youth%20and%20Violent%20Extremism%20in%20Mindanao,%20Philippines.pdf>). As they indicate in their paper, the field of development-based conflict and extremism research is very much in its infancy. Recent efforts by Hedayah and USIP's RESOLVE have provided a needed focus on methodology in the field (RESOLVE Network. Building Consensus and Setting Priorities for Research on Violent Extremism: Working Paper on Findings from Expert Consultations. United States Institute of Peace, September 2016). While these and other efforts have improved methodologies recently, there remains an overreliance on secondary sources and a lack of empirical data that can be used in statistical and inferential analyses. As a result, there remain many untested assumptions, particularly regarding factors driving conflict and extremism.

Casey and Pottebaum describe two gaps in the methodology that they suggest are filled by their mixed-methods approach. First is a lack of qualitative research focusing on the experience of extremists themselves. This results in a lack of clear understanding of the process of radicalization and of how extremists experience the drivers of conflict themselves. Research needs to be more grounded in the experiences of extremists to properly understand the dynamics of radicalization. The second gap highlighted by Casey and Pottebaum is the absence of inferential statistics and quantitative studies that can reveal how assumed drivers of conflict and extremism interact and correlate with social, political and economic factors. Quantitative studies tend to take the form of public opinion polling and include no effort to explore underlying relationships that may shape opinion.

This research project will build on the work of Casey and Pottebaum in two ways. First, it will replicate the method (adapted for the local context) in the similar, violence- and conflict-affected environment of the Deep South. This will test the efficacy of this methodology in a different geographic area with a different demographic group. Second, this research will expand use of the methodology to an environment characterized by tension and latent conflict (North and Northeast Thailand), where subjects of study are not extremists and extremist organizations, but rather persons and groups involved in destructive or violent acts during periods of heightened unrest. No examples could be found of significant research on this topic in these regions, indicating a void of tested methodological approaches in this regard.

At the outset of the design phase, the research team conducted a lengthy review of relevant literature to better understand the drivers of conflict and factors relevant to community governance and social cohesion in Thailand. Much of the literature and research to date can be characterized as general situational analyses and political-social assessments. Most studies relied on secondary data and interviews of a few key informants. Only a handful included survey data from local populations. The literature predominantly focuses on the conflict

## Together Activity Indicator Reference Sheet

in the Deep South, with little available on the North and Northeast. Research conducted by The Asia Foundation, Engvall and Vajirakachorn are noteworthy, adding much to the base of knowledge and provided a foundation for future studies, including the study presented here (Burke, Adam and Pauline Tweedie. *The Contested Corners of Asia: The Case of Southern Thailand*. The Asia Foundation, 2013. Engvall, Anders. *Trust and Conflict in Southern Thailand*. No Date. [https://editorialexpress.com/cgi-bin/conference/download.cgi?db\\_name=SERC2011&paper\\_id=234](https://editorialexpress.com/cgi-bin/conference/download.cgi?db_name=SERC2011&paper_id=234). Engvall, Anders and Magnus Andersson. *The Dynamics of Conflict in Southern Thailand*. *Asian Economic Papers*, Fall 2014, Volume 13, No 3, pp 169-189. Vajirakachorn, Surasit. *Social Inclusion in Southern Border Provinces of Thailand*. *International Journal of Social Quality*, Winter 2012, Vol. 2, Issue 2, pp 63-80).

### Study Outputs

The specific outputs of the research project include:

1. Identified and tested assumptions regarding the drivers of conflict.
2. Deeper understanding of key factors related to community governance and social cohesion.
3. Clarity on risk factors for destructive and violent actions and of geographic areas and demographic groups that are most vulnerable to being influenced to commit extreme acts.
4. An understanding of messages used to build support and influence people to commit extreme acts, and the channels of communication that they use.

### Methodology

This is a mixed methods study comprising two components: pathways case studies and a perceptions survey.

#### *Pathways Case Studies*

A hallmark of case study research is the use of multiple data sources, a feature which enhances data credibility. Case studies will be constructed from both primary and secondary data sources. A review of literature and discussion among research team members from the research locations led to initial themes and concepts that will guide interviews and revealed cases and events that will be explored during the field interviews. Interviews will be conducted with individuals (“Actors”) with direct experience with destructive and violent acts to better understand their assumptions around pathways and drivers of extremism. Interviews will also be conducted with persons who influenced or recruited others to participate in extreme acts (“Influencers”).

Primary data collection will be done through semi-structured interviews with Actors and their family members, friends and other associates, and with Influencers. Interview data will be used to build detailed case studies of pathways to extreme action and of communication methods and messages used to influence and recruit people to commit extreme acts. Interview respondents will be classified in two groups depending on their knowledge of and proximity to primary subjects. Primary respondents include actual Actors or Influencers. Secondary respondents are friends, family members or associates of Actors (case studies of Influencers will not include interviews with secondary respondents as these are not necessary to understand communication methods and messages). Case studies of Actors will aim to use at least three different respondents per case study to increase the validity of the findings.

Sampling for interviews will be conducted through a snowball sampling methodology. Initial interviews will be conducted with either primary or secondary respondents, depending upon the circumstances and researcher knowledge of the individuals involved. During interviews, researchers will ask respondents for names of other persons they might interview who have special knowledge on the topic. This sampling technique will be continued until enough cases are identified and sufficient interviews are conducted to write coherent and complete case studies. A total of 40 Actor case studies and 10 Influencer case studies will be conducted, including sixteen Actors and four of Influencers in the North Region and in the Northeast Region, and eight Actors and two influencers in the Deep South.

Interviews will be semi-structured, following a basic interview guide. Interviewers will ask follow-up questions and probe for clarification or for additional details. Detailed notes will be compiled immediately following each interview. When possible, interviews will be conducted by a lead interviewer assisted by a note taker.

#### *Perceptions Survey*

The quantitative component of the research project is a survey that explores perceptions and issues of governance, social cohesion and drivers of conflict in three regions of Thailand. The survey will help clarify and

## Together Activity Indicator Reference Sheet

deepen understanding of factors that leave people vulnerable to being influenced to commit destructive or violent actions, and to test prevailing assumptions about the drivers of conflict. It will define more precisely the at-risk populations that *Together* might work with in future activities, in collaboration with Royal Thai Government agencies and local civil society organizations. The survey will be completed using face-to-face interviews of people age 18 to 60 years in eleven provinces following a standard set of questions. The questions help define and provide quantitative measures of the abstract drivers and factors of interest in this study. Care will be taken to ensure that the group of respondents includes representation from youth, women and other marginalized groups, as appropriate.

Research location. The research area includes the North, Northeast and Deep South regions of Thailand. Considering population size, recent history regarding key events related to this study, and locations of research partner universities, the research area in the North was narrowed to the standard government local regions of Upper North 1 and Central Northeast, each comprising four provinces. Comprising just three provinces, it was not necessary to reduce the scope of the research area in the Deep South region. This provides a total of eleven provinces in the research area.

The literature review and expert opinion suggest that the population size of a given area might influence perceptions and the relative importance of drivers of conflict. Thus, districts for surveying within each province were purposively selected to include two with “more population” and two with “less population”. This was accomplished by ordering all districts in a province by population size (age 18 to 60 years), then splitting the districts into two groups – half of the total districts with greater population, and half of the population with less population. For example, consider a province with ten districts. The districts are ordered 1 through 10 by population size. The five districts with the greatest population are placed in one group, the other five with less population are placed in another group. A total of four districts are then randomly selected from each province, including two with greater population and two with smaller population. Following this approach, two sub-districts were selected randomly from the list of all sub-districts in each district (without consideration of population size, which was not relevant at this geographic level).

In each sub-district, a form of systematic random sampling of villages to survey will be used that is most appropriate to the context. In areas where 30 or fewer persons are to be surveyed, these persons will be selected randomly from one village. Where more than 30 persons are to be surveyed, the sample will be drawn from two villages selected randomly from within the sub-district.

Sample size. The eleven provinces in the research area provide the level of analysis for the survey (primary sampling unit). This will enable comparison of findings across provinces and regions. The target respondent sample size for each province was calculated based on a confidence interval of 95% and margin of error of +/- 7.5%. To ensure the minimum sample size is met, the number of interviews conducted is increased by 5% above the amount required to allow for the discarding of inaccurate or incomplete forms (note that the sample sizes indicated in Table 2 below include the additional 5% sample). Thus, a total of 1,980 persons will be surveyed (180 persons in each province).

Respondent Selection. Within each village, survey teams will select individuals to participate in the survey following a standard random process. Research teams will meet with relevant local government authorities to obtain census lists of persons residing in each selected village. The persons on these lists will be numbered sequentially, and a random number generator will then be used to randomly select persons from the list for interviewing. The number of persons randomly selected from the master list will be greater than the number required by the study to ensure adequate names (persons) have been shortlisted in case one or more persons on the shortlist are not available or choose not to participate in the survey interview.

### Design Limitations

The research team designed the research approach and tools with a goal of reducing the impact of standard biases encountered in social science research. Interviews with a broad array of individuals and a review of current literature were used to develop a comprehensive list of governance and social cohesion factors and drivers of conflict in Thailand most frequently highlighted by experts and discussed in the literature. The factors and drivers were not evaluated or ranked but were all taken as assumptions which would be tested equally through the research process. This reduced any potential confirmation bias on the part of the research team.

Research tools were structured to reduce common biases that arise from poor design. Leading or double-barreled questions were not used, questionnaires were structured to allow for rapport building before sensitive questions were broached, some questions were reverse coded and others were phrased using neutral language to reduce common response biases. All materials were introduced to research team members and orientation in their use provided in native languages before administration, reducing chances for spontaneous

## Together Activity Indicator Reference Sheet

translation errors. [The research team determined that all research documents (tools) were to be written in Thai Language, with orientation/training discussions in each region using local languages and dialects as appropriate. Interviews of respondents were conducted in either Thai or local language, depending upon the needs of the person interviewed.]

In addition, a random sampling plan was designed to draw as representative a sample as possible given project constraints. Random respondent selection and population quotas guard against selection biases.

Standard practices were followed to ensure the quality of the survey questionnaire. The validity of the questionnaire – the extent to which it measures what it is intended to measure – was established using face validity. The research team consulted a DAI expert on research regarding conflict and violence to discuss and confirm the validity of the factors and associated questions. In addition, the questionnaire to be used in this research project is largely based on and adapted to the Thai context from a similar survey used successfully and which yielded strong results in two separate cases across various demographic groups in the Philippines in 2017 and 2018 (which, in turn, was based on a survey used successfully in Thailand in 2012 under the Sapan Project). This provides assurance that the content of the survey instrument – the questions and variables – represent the domain of factors relevant to this study. Importantly, the questionnaire was constructed and tested through a methodical process by research team members who themselves are experts on the subject matter and are from and work in the various research locations.

Prior to implementing the full survey, the research team pilot tested the questionnaire in each region covered by the research project. A minimum of 20 persons were surveyed in each province, for a total pilot test of 220 persons. This highlighted unclear content and language issues and facilitated the review of the appropriateness and flow of the questions throughout the survey instrument.

Data from the pilot test was used to check the consistency of responses and thus the accuracy in implementing the tool (i.e., Enumerator skill in asking questions and ensuring respondent understanding of questions and response options). The questionnaire includes some negatively phrased questions; responses to these questions were reverse coded and compared for consistency with responses to similar positively phrased questions.

Following the review of pilot test results, the research team revised the questionnaire accordingly and briefed the Enumerators to all changes in content and approach.

The reliability of the questionnaire is also critical and will be tested by the research team following collection of final survey data. While reliability typically refers to the degree to which the results of a survey or measurement can be replicated across time – something not fully applicable for a survey of perceptions that can, and often do, change over time – it also addresses the aspect of the internal consistency of the questionnaire. That is, the extent to which the questions are measuring the same thing. Internal consistency will be estimated using Cronbach's alpha index (note that Cronbach's alpha index was used to measure the consistency of the questionnaire in the Philippines context on two occasions and no problems were found). Should the index score highlight weaknesses in internal consistency of the questionnaire, standard procedures will be followed to assess and, if needed, remove problematic questions (those not correlated closely with others) step-wise until acceptable reliability is obtained.

### Confidentiality and Informed Consent

*Together* and the University partners will implement strict measures to ensure respondent confidentiality. At the time of survey and interviews, respondents will be given a unique number and all documents associated with that respondent will use only the respondent number for identification. If names of specific individuals are discussed in a case study interview and end up in transcripts, names will immediately be redacted and replaced with a pseudonym or a number. As the case studies will have detailed personal information such that deductive disclosure is a concern, full case studies will not be shared with persons outside the research team or published publicly. Anonymous quotes and details can be used in the final report as the danger of deductive disclosure is minimal. Informed consent shall be obtained orally from each participant and participants will be given the option of not participating in the study as part of the informed consent process.

Do no harm. The research team designed the questionnaire and implementation approach using best practices for surveys in conflict areas and which cover sensitive issues. The pilot test confirmed that no questions were too sensitive or stressful for respondents, and that none would compromise their safety. Data will be collected by Enumerators who are from the research locations, who speak local languages and are closely familiar with the local context, helping to ease any anxieties that respondents may feel when discussing sensitive issues. Enumerators will be trained to observe for respondent discomfort, pain or anxiety, or if traumatic memories and

## Together Activity Indicator Reference Sheet

emotions are stirred during the interview and stop the interview if such conditions arise. The security of respondents and research staff is paramount. Survey tasks will not be conducted in areas known to be dangerous, interviews will be stopped and rescheduled or cancelled if security becomes tenuous during implementation.

### Data Quality Control, Processing and Analysis

Data quality begins with sound questionnaires and interview guidelines, and proper training of staff who will collect data in the field. The research team conducted separate training courses for Enumerators who will implement the perceptions survey, and for Interviewers who will complete the case studies. This ensures that this staff understand the overall research project and its objectives, their roles and responsibilities in collecting field data.

During the field survey, Field Supervisors will be present to assist the Enumerators to address problems that might arise and to observe the conduct of the survey to ensure consistency in approach and application of the survey instrument. Field Supervisors will directly observe a minimum of 10% of the survey interviews conducted in their designated research area to ensure all survey standard approaches are being followed as required.

As surveys are completed, the Field Supervisors and Survey Research Managers will review all data capture forms to ensure they were completed accurately, following guidelines presented in the Questionnaire Instructions document. Following their review, university partners will send all forms to Khon Kaen University for processing and statistical analysis tasks. Having a central location for these tasks ensures consistency in approach regarding the acceptance or rejection of data collected in each province, efficient data entry and application of standard and appropriate statistical analysis techniques.

Prior to data entry, research staff at Khon Kaen University will review all survey forms to ensure they are complete and readable. Forms missing data on respondent location or age, or with errors on 5 or more questions will be rejected (e.g., questions having none or more than two responses). A Survey Research Manager will oversee entry of survey data into the survey database. A minimum of 10% of each Data Entry Clerk's work will be double-entered and assessed to detect and minimize data entry errors. Khon Kaen University-based research team members will complete all statistical analysis tasks, in close coordination with *Together* and the other partner universities.

Initial survey data analysis will focus on: (1) the identification and testing of assumptions regarding the drivers of conflict, and (2) understanding key issues related to governance and social cohesion in the research area. Regression analysis using composite indices for each of the assumed drivers will help identify factors associated with support for extreme action or ideas. For the second output, descriptive statistics and simple correlations and significance tests will be used to explore the data. The analysis will compare results across locations, sex, religion, and age cohort, as appropriate, to identify key findings that can inform targeted programming.

Analysis of case study data will proceed through two phases: building case studies and comparative analysis. As interviews are completed, case studies will be written based on primary and secondary interviews. Individual case studies will be 3-4 pages in length and include all pertinent details discovered data collection.

After the case studies are completed, comparative analysis will be conducted to describe the most common pathways to destructive or violent actions, identify common themes and highlight significant differences in the identified pathways. Case studies will be coded based on a coding matrix developed by the research group. Significant similarities and differences across different pathways will be identified and explored, and the most common pathways will be described in detail.

As the final step in the analysis of data, the research team will integrate the qualitative findings with those of the quantitative survey to help uncover or highlight causality between drivers of conflict and the destructive or extreme actions and extreme ideas. That is, the findings will not just rely on the results of regression analysis, but rather they will pull together those results with the studies of personal life experiences of the Actors interviewed to see how the factors "work" beyond just the correlations data.

**Unit of Measurement:** Compound variable

**Disaggregation(s):** Sex (male and female)

**Data Collection:** Survey using standard approach and tools

**Data Source(s):** Individual perception survey

**Reporting Frequency:** Data will be reported to USAID on/about June 2019 (baseline), October 2020, and



## Together Activity Indicator Reference Sheet

September 2022 (beginning, middle and end of Activity)
<b>DATA QUALITY</b>
<b>Date of Previous Data Quality Assessment &amp; Reviewer:</b> None (new Activity and Indicator)
<b>Date of the Next Data Quality Assessment:</b> October 2020
<b>PLAN FOR DATA USE</b>
<b>Known Data Limitations:</b> There are no known data limitations
<b>Plan for Data Use:</b> Reporting; review of Activity strategy, approach and actions; raising awareness among stakeholders of outcomes of their actions (i.e., promote stakeholder learning)
<b>CHANGES TO INDICATOR</b>
<b>Change to Indicator:</b> None
<b>Other Notes:</b> None
<b>This sheet was last updated on: 7 May 2020, by <i>Together</i> COP, and was last reviewed &amp; approved on: _____, by: _____</b>

## Together Activity Indicator Reference Sheet

<b>Indicator No. &amp; Name: 3.3. Perception of "Responsibility for the Common Good" of in sample of focus community members</b>
<b>DO No. &amp; Name:</b> DO 1: Regional Institutions' Ability to Promote Sustainable and Inclusive Regional Growth Increased
<b>IR No. &amp; Name:</b> IR 1.3: Good Governance Strengthened
<b>Sub-IR No. &amp; Name:</b> Sub-IR 1.3.2: Increased Capacity of Civil Society and Private Citizens to Participate Effective in Public Decision Making
<b>No. &amp; Name of Activity(s):</b> 72048618CA00008, Together
<b>No. &amp; Name of Action(s)/Intervention(s):</b> Objective 3. Improve relations and constructive dialogue among citizens of different backgrounds
<b>Geographic Coverage:</b> Thailand
<b>Origin of indicator:</b> Current Foreign Assistance Framework ("F") indicator ____ No. _____, for reporting year(s) 2020-2022, program area/element/sub-element _____; Existing PMP Indicator ____ No. _____; Existing IR/Project Indicator ____ No. _____; USAID Global/Regional Indicator ____ (specify _____); Other (specify): Custom Outcome
<b>Is this indicator subject to a data quality assessment (DQA) by USAID?</b> Yes ____ No ____
<b>DESCRIPTION</b>
<p><b>Indicator Definition:</b></p> <p>"Responsibility for the Common Good" refers to a compound variable developed in the <i>Together</i> Community Governance and Drivers of Conflict Research Project. It captures the perceptions of respondents regarding the extent to which community members feel a sense of responsibility for the common good of their community.</p> <p>"Sample of focus community members" refers to a random sample of people in all project geographic locations during the period of <i>Together</i> implementation (e.g., all districts or provinces). The sample size is calculated from the total number of persons age 18-60 years in the location and provides a margin of error of +/- 7.5% at the 95% confidence interval. The sample is representative regarding the sex of respondents.</p> <p>The value of the compound variable "Responsibility for the Common Good" is derived from responses to 2 survey questions:</p> <p style="padding-left: 20px;">19a. Next, I would like to ask you some questions about conditions in community in which you are now living. You can respond strongly agree, agree somewhat, disagree somewhat, or strongly disagree. People in this community are willing to cooperate to improve the community.</p> <p style="padding-left: 20px;">19h. Next, I would like to ask you some questions about conditions in the community in which you are now living. You can respond strongly agree, agree somewhat, disagree somewhat, or strongly disagree. Officials in the community make decisions with the best interests of the whole community in mind.</p> <p>Survey data on the perceptions and opinions of community members will be collected in Chiang Mai, Khon Kaen, Yala, Pattani and Narathiwat at the outset (March 2019), middle (about June 2020) and end of the Activity (about July 2022). An increase in the value of the variable over time indicates positive progress (increased perception of consensus orientation in making decisions). <i>Together</i> will collect data and calculate variable values in March 2019, about June 2020 and about July 2022. Findings will be compared to discern whether there has been a significant change in the variable over time.</p> <p><b>Additional background information on the Community Governance and Drivers of Conflict Research Project</b></p> <p>During November 2018 to January 2019, a research partnership comprising the USAID-funded <i>Together</i> Project (implemented by DAI Global, LLC), Maejo University, Khon Kaen University, Yala Rajabhat University, Prince of Songkla University–Pattani Campus and Princess of Naradhiwas University (here after the "research team") designed a mixed methods research project to explore issues of governance, social cohesion and conflict in the North, Northeast and Deep South regions of Thailand. The results of the study will be used in designing activities to strengthen citizen-government engagement and support community-community interaction and to assess the impact of these interventions. The research project includes a quantitative survey of a representative sample of residents in select provinces and interviews of a purposive sample of key actors and influential persons who are well-placed to provide personal insights and share experiences on issues of governance, social cohesion and conflict in the study area.</p>

## Together Activity Indicator Reference Sheet

The objective of this research is to provide a better and more nuanced understanding of community governance and social cohesion issues, drivers of conflict and the pathways through which individuals become vulnerable to and involved with destructive or violent actions.

This objective will be achieved through a mixed methods research approach with qualitative and quantitative components. The first step in the research design process was to compile a list of key factors that underpin strong governance and social cohesion, and those assumed to be drivers of conflict. The research team did this through a close review of available research literature, consultation with experts on governance and conflict in Thailand, and discussions with academics, government officials and civil society leaders in the research area. To understand how the drivers of conflict form pathways to extreme actions, detailed case studies will be conducted through semi-structured interviews of people who have been personally involved in destructive or violent actions, members of their families or close friends, and people who have actively encouraged and influenced others to commit such actions.

The research also includes a quantitative survey of perceptions to enable a test of prevailing assumptions about the drivers of conflict, and to identify risk factors and define at-risk populations in the research area. The research team will collect a stratified random sample of 1,980 persons age 18 to 60 years from 11 provinces spread across the North, Northeast and Deep South regions of Thailand. The perceptions survey and case study interviews, and analysis of resulting data, will be conducted over a period of about three months, during March to May 2019.

The methodology proposed for this research project builds directly on the method developed and employed by Casey and Pottebaum in the Philippines (Casey, Kevin and David Pottebaum. Youth and Violent Extremism in Mindanao, Philippines: A Mixed-Methods Design for Testing Assumptions about Drivers of Extremism. DAI Global, LLC, Bethesda, Maryland, USA, August 2018. <https://www.dai.com/uploads/Youth%20and%20Violent%20Extremism%20in%20Mindanao,%20Philippines.pdf>). As they indicate in their paper, the field of development-based conflict and extremism research is very much in its infancy. Recent efforts by Hedayah and USIP's RESOLVE have provided a needed focus on methodology in the field (RESOLVE Network. Building Consensus and Setting Priorities for Research on Violent Extremism: Working Paper on Findings from Expert Consultations. United States Institute of Peace, September 2016). While these and other efforts have improved methodologies recently, there remains an overreliance on secondary sources and a lack of empirical data that can be used in statistical and inferential analyses. As a result, there remain many untested assumptions, particularly regarding factors driving conflict and extremism.

Casey and Pottebaum describe two gaps in the methodology that they suggest are filled by their mixed-methods approach. First is a lack of qualitative research focusing on the experience of extremists themselves. This results in a lack of clear understanding of the process of radicalization and of how extremists experience the drivers of conflict themselves. Research needs to be more grounded in the experiences of extremists to properly understand the dynamics of radicalization. The second gap highlighted by Casey and Pottebaum is the absence of inferential statistics and quantitative studies that can reveal how assumed drivers of conflict and extremism interact and correlate with social, political and economic factors. Quantitative studies tend to take the form of public opinion polling and include no effort to explore underlying relationships that may shape opinion.

This research project will build on the work of Casey and Pottebaum in two ways. First, it will replicate the method (adapted for the local context) in the similar, violence- and conflict-affected environment of the Deep South. This will test the efficacy of this methodology in a different geographic area with a different demographic group. Second, this research will expand use of the methodology to an environment characterized by tension and latent conflict (North and Northeast Thailand), where subjects of study are not extremists and extremist organizations, but rather persons and groups involved in destructive or violent acts during periods of heightened unrest. No examples could be found of significant research on this topic in these regions, indicating a void of tested methodological approaches in this regard.

At the outset of the design phase, the research team conducted a lengthy review of relevant literature to better understand the drivers of conflict and factors relevant to community governance and social cohesion in Thailand. Much of the literature and research to date can be characterized as general situational analyses and political-social assessments. Most studies relied on secondary data and interviews of a few key informants. Only a handful included survey data from local populations. The literature predominantly focuses on the conflict in the Deep South, with little available on the North and Northeast. Research conducted by The Asia Foundation, Engvall and Vajirakachorn are noteworthy, adding much to the base of knowledge and provided a foundation for future studies, including the study presented here (Burke, Adam and Pauline

## Together Activity Indicator Reference Sheet

Tweedie. *The Contested Corners of Asia: The Case of Southern Thailand*. The Asia Foundation, 2013.  
Engvall, Anders. *Trust and Conflict in Southern Thailand*. No Date. [https://editorialexpress.com/cgi-bin/conference/download.cgi?db\\_name=SERC2011&paper\\_id=234](https://editorialexpress.com/cgi-bin/conference/download.cgi?db_name=SERC2011&paper_id=234). Engvall, Anders and Magnus Andersson. *The Dynamics of Conflict in Southern Thailand*. *Asian Economic Papers*, Fall 2014, Volume 13, No 3, pp 169-189. Vajirakachorn, Surasit. *Social Inclusion in Southern Border Provinces of Thailand*. *International Journal of Social Quality*, Winter 2012, Vol. 2, Issue 2, pp 63-80).

### Study Outputs

The specific outputs of the research project include:

1. Identified and tested assumptions regarding the drivers of conflict.
2. Deeper understanding of key factors related to community governance and social cohesion.
3. Clarity on risk factors for destructive and violent actions and of geographic areas and demographic groups that are most vulnerable to being influenced to commit extreme acts.
4. An understanding of messages used to build support and influence people to commit extreme acts, and the channels of communication that they use.

### Methodology

This is a mixed methods study comprising two components: pathways case studies and a perceptions survey.

#### *Pathways Case Studies*

A hallmark of case study research is the use of multiple data sources, a feature which enhances data credibility. Case studies will be constructed from both primary and secondary data sources. A review of literature and discussion among research team members from the research locations led to initial themes and concepts that will guide interviews and revealed cases and events that will be explored during the field interviews. Interviews will be conducted with individuals (“Actors”) with direct experience with destructive and violent acts to better understand their assumptions around pathways and drivers of extremism. Interviews will also be conducted with persons who influenced or recruited others to participate in extreme acts (“Influencers”).

Primary data collection will be done through semi-structured interviews with Actors and their family members, friends and other associates, and with Influencers. Interview data will be used to build detailed case studies of pathways to extreme action and of communication methods and messages used to influence and recruit people to commit extreme acts. Interview respondents will be classified in two groups depending on their knowledge of and proximity to primary subjects. Primary respondents include actual Actors or Influencers. Secondary respondents are friends, family members or associates of Actors (case studies of Influencers will not include interviews with secondary respondents as these are not necessary to understand communication methods and messages). Case studies of Actors will aim to use at least three different respondents per case study to increase the validity of the findings.

Sampling for interviews will be conducted through a snowball sampling methodology. Initial interviews will be conducted with either primary or secondary respondents, depending upon the circumstances and researcher knowledge of the individuals involved. During interviews, researchers will ask respondents for names of other persons they might interview who have special knowledge on the topic. This sampling technique will be continued until enough cases are identified and sufficient interviews are conducted to write coherent and complete case studies. A total of 40 Actor case studies and 10 Influencer case studies will be conducted, including sixteen Actors and four of Influencers in the North Region and in the Northeast Region, and eight Actors and two influencers in the Deep South.

Interviews will be semi-structured, following a basic interview guide. Interviewers will ask follow-up questions and probe for clarification or for additional details. Detailed notes will be compiled immediately following each interview. When possible, interviews will be conducted by a lead interviewer assisted by a note taker.

#### *Perceptions Survey*

The quantitative component of the research project is a survey that explores perceptions and issues of governance, social cohesion and drivers of conflict in three regions of Thailand. The survey will help clarify and deepen understanding of factors that leave people vulnerable to being influenced to commit destructive or violent actions, and to test prevailing assumptions about the drivers of conflict. It will define more precisely

## Together Activity Indicator Reference Sheet

the at-risk populations that *Together* might work with in future activities, in collaboration with Royal Thai Government agencies and local civil society organizations. The survey will be completed using face-to-face interviews of people age 18 to 60 years in eleven provinces following a standard set of questions. The questions help define and provide quantitative measures of the abstract drivers and factors of interest in this study. Care will be taken to ensure that the group of respondents includes representation from youth, women and other marginalized groups, as appropriate.

Research location. The research area includes the North, Northeast and Deep South regions of Thailand. Considering population size, recent history regarding key events related to this study, and locations of research partner universities, the research area in the North was narrowed to the standard government local regions of Upper North 1 and Central Northeast, each comprising four provinces. Comprising just three provinces, it was not necessary to reduce the scope of the research area in the Deep South region. This provides a total of eleven provinces in the research area.

The literature review and expert opinion suggest that the population size of a given area might influence perceptions and the relative importance of drivers of conflict. Thus, districts for surveying within each province were purposively selected to include two with “more population” and two with “less population”. This was accomplished by ordering all districts in a province by population size (age 18 to 60 years), then splitting the districts into two groups – half of the total districts with greater population, and half of the population with less population. For example, consider a province with ten districts. The districts are ordered 1 through 10 by population size. The five districts with the greatest population are placed in one group, the other five with less population are placed in another group. A total of four districts are then randomly selected from each province, including two with greater population and two with smaller population. Following this approach, two sub-districts were selected randomly from the list of all sub-districts in each district (without consideration of population size, which was not relevant at this geographic level).

In each sub-district, a form of systematic random sampling of villages to survey will be used that is most appropriate to the context. In areas where 30 or fewer persons are to be surveyed, these persons will be selected randomly from one village. Where more than 30 persons are to be surveyed, the sample will be drawn from two villages selected randomly from within the sub-district.

Sample size. The eleven provinces in the research area provide the level of analysis for the survey (primary sampling unit). This will enable comparison of findings across provinces and regions. The target respondent sample size for each province was calculated based on a confidence interval of 95% and margin of error of +/- 7.5%. To ensure the minimum sample size is met, the number of interviews conducted is increased by 5% above the amount required to allow for the discarding of inaccurate or incomplete forms (note that the sample sizes indicated in Table 2 below include the additional 5% sample). Thus, a total of 1,980 persons will be surveyed (180 persons in each province).

Respondent Selection. Within each village, survey teams will select individuals to participate in the survey following a standard random process. Research teams will meet with relevant local government authorities to obtain census lists of persons residing in each selected village. The persons on these lists will be numbered sequentially, and a random number generator will then be used to randomly select persons from the list for interviewing. The number of persons randomly selected from the master list will be greater than the number required by the study to ensure adequate names (persons) have been shortlisted in case one or more persons on the shortlist are not available or choose not to participate in the survey interview.

### Design Limitations

The research team designed the research approach and tools with a goal of reducing the impact of standard biases encountered in social science research. Interviews with a broad array of individuals and a review of current literature were used to develop a comprehensive list of governance and social cohesion factors and drivers of conflict in Thailand most frequently highlighted by experts and discussed in the literature. The factors and drivers were not evaluated or ranked but were all taken as assumptions which would be tested equally through the research process. This reduced any potential confirmation bias on the part of the research team.

Research tools were structured to reduce common biases that arise from poor design. Leading or double-barreled questions were not used, questionnaires were structured to allow for rapport building before sensitive questions were broached, some questions were reverse coded and others were phrased using neutral language to reduce common response biases. All materials were introduced to research team members and orientation in their use provided in native languages before administration, reducing chances for spontaneous translation errors. [The research team determined that all research documents (tools) were

## Together Activity Indicator Reference Sheet

to be written in Thai Language, with orientation/training discussions in each region using local languages and dialects as appropriate. Interviews of respondents were conducted in either Thai or local language, depending upon the needs of the person interviewed.]

In addition, a random sampling plan was designed to draw as representative a sample as possible given project constraints. Random respondent selection and population quotas guard against selection biases.

Standard practices were followed to ensure the quality of the survey questionnaire. The validity of the questionnaire – the extent to which it measures what it is intended to measure – was established using face validity. The research team consulted a DAI expert on research regarding conflict and violence to discuss and confirm the validity of the factors and associated questions. In addition, the questionnaire to be used in this research project is largely based on and adapted to the Thai context from a similar survey used successfully and which yielded strong results in two separate cases across various demographic groups in the Philippines in 2017 and 2018 (which, in turn, was based on a survey used successfully in Thailand in 2012 under the Sapan Project). This provides assurance that the content of the survey instrument – the questions and variables – represent the domain of factors relevant to this study. Importantly, the questionnaire was constructed and tested through a methodical process by research team members who themselves are experts on the subject matter and are from and work in the various research locations.

Prior to implementing the full survey, the research team pilot tested the questionnaire in each region covered by the research project. A minimum of 20 persons were surveyed in each province, for a total pilot test of 220 persons. This highlighted unclear content and language issues and facilitated the review of the appropriateness and flow of the questions throughout the survey instrument.

Data from the pilot test was used to check the consistency of responses and thus the accuracy in implementing the tool (i.e., Enumerator skill in asking questions and ensuring respondent understanding of questions and response options). The questionnaire includes some negatively phrased questions; responses to these questions were reverse coded and compared for consistency with responses to similar positively phrased questions.

Following the review of pilot test results, the research team revised the questionnaire accordingly and briefed the Enumerators to all changes in content and approach.

The reliability of the questionnaire is also critical and will be tested by the research team following collection of final survey data. While reliability typically refers to the degree to which the results of a survey or measurement can be replicated across time – something not fully applicable for a survey of perceptions that can, and often do, change over time – it also addresses the aspect of the internal consistency of the questionnaire. That is, the extent to which the questions are measuring the same thing. Internal consistency will be estimated using Cronbach's alpha index (note that Cronbach's alpha index was used to measure the consistency of the questionnaire in the Philippines context on two occasions and no problems were found). Should the index score highlight weaknesses in internal consistency of the questionnaire, standard procedures will be followed to assess and, if needed, remove problematic questions (those not correlated closely with others) step-wise until acceptable reliability is obtained.

### Confidentiality and Informed Consent

*Together* and the University partners will implement strict measures to ensure respondent confidentiality. At the time of survey and interviews, respondents will be given a unique number and all documents associated with that respondent will use only the respondent number for identification. If names of specific individuals are discussed in a case study interview and end up in transcripts, names will immediately be redacted and replaced with a pseudonym or a number. As the case studies will have detailed personal information such that deductive disclosure is a concern, full case studies will not be shared with persons outside the research team or published publicly. Anonymous quotes and details can be used in the final report as the danger of deductive disclosure is minimal. Informed consent shall be obtained orally from each participant and participants will be given the option of not participating in the study as part of the informed consent process.

Do no harm. The research team designed the questionnaire and implementation approach using best practices for surveys in conflict areas and which cover sensitive issues. The pilot test confirmed that no questions were too sensitive or stressful for respondents, and that none would compromise their safety. Data will be collected by Enumerators who are from the research locations, who speak local languages and are closely familiar with the local context, helping to ease any anxieties that respondents may feel when discussing sensitive issues. Enumerators will be trained to observe for respondent discomfort, pain or anxiety, or if traumatic memories and emotions are stirred during the interview and stop the interview if such

## Together Activity Indicator Reference Sheet

conditions arise. The security of respondents and research staff is paramount. Survey tasks will not be conducted in areas known to be dangerous, interviews will be stopped and rescheduled or cancelled if security becomes tenuous during implementation.

### Data Quality Control, Processing and Analysis

Data quality begins with sound questionnaires and interview guidelines, and proper training of staff who will collect data in the field. The research team conducted separate training courses for Enumerators who will implement the perceptions survey, and for Interviewers who will complete the case studies. This ensures that this staff understand the overall research project and its objectives, their roles and responsibilities in collecting field data.

During the field survey, Field Supervisors will be present to assist the Enumerators to address problems that might arise and to observe the conduct of the survey to ensure consistency in approach and application of the survey instrument. Field Supervisors will directly observe a minimum of 10% of the survey interviews conducted in their designated research area to ensure all survey standard approaches are being followed as required.

As surveys are completed, the Field Supervisors and Survey Research Managers will review all data capture forms to ensure they were completed accurately, following guidelines presented in the Questionnaire Instructions document. Following their review, university partners will send all forms to Khon Kaen University for processing and statistical analysis tasks. Having a central location for these tasks ensures consistency in approach regarding the acceptance or rejection of data collected in each province, efficient data entry and application of standard and appropriate statistical analysis techniques.

Prior to data entry, research staff at Khon Kaen University will review all survey forms to ensure they are complete and readable. Forms missing data on respondent location or age, or with errors on 5 or more questions will be rejected (e.g., questions having none or more than two responses). A Survey Research Manager will oversee entry of survey data into the survey database. A minimum of 10% of each Data Entry Clerk's work will be double-entered and assessed to detect and minimize data entry errors. Khon Kaen University-based research team members will complete all statistical analysis tasks, in close coordination with *Together* and the other partner universities.

Initial survey data analysis will focus on: (1) the identification and testing of assumptions regarding the drivers of conflict, and (2) understanding key issues related to governance and social cohesion in the research area. Regression analysis using composite indices for each of the assumed drivers will help identify factors associated with support for extreme action or ideas. For the second output, descriptive statistics and simple correlations and significance tests will be used to explore the data. The analysis will compare results across locations, sex, religion, and age cohort, as appropriate, to identify key findings that can inform targeted programming.

Analysis of case study data will proceed through two phases: building case studies and comparative analysis. As interviews are completed, case studies will be written based on primary and secondary interviews. Individual case studies will be 3-4 pages in length and include all pertinent details discovered data collection.

After the case studies are completed, comparative analysis will be conducted to describe the most common pathways to destructive or violent actions, identify common themes and highlight significant differences in the identified pathways. Case studies will be coded based on a coding matrix developed by the research group. Significant similarities and differences across different pathways will be identified and explored, and the most common pathways will be described in detail.

As the final step in the analysis of data, the research team will integrate the qualitative findings with those of the quantitative survey to help uncover or highlight causality between drivers of conflict and the destructive or extreme actions and extreme ideas. That is, the findings will not just rely on the results of regression analysis, but rather they will pull together those results with the studies of personal life experiences of the Actors interviewed to see how the factors "work" beyond just the correlations data.

**Unit of Measurement:** Compound variable

**Disaggregation(s):** Sex (male and female)

**Data Collection:** Survey using standard approach and tools

**Data Source(s):** Individual perception survey

**Reporting Frequency:** Data will be reported to USAID on/about June 2019 (baseline), October 2020, and

## Together Activity Indicator Reference Sheet

September 2022 (beginning, middle and end of Activity)
<b>DATA QUALITY</b>
<b>Date of Previous Data Quality Assessment &amp; Reviewer:</b> None (new Activity and Indicator)
<b>Date of the Next Data Quality Assessment:</b> October 2020
<b>PLAN FOR DATA USE</b>
<b>Known Data Limitations:</b> There are no known data limitations
<b>Plan for Data Use:</b> Reporting; review of Activity strategy, approach and actions; raising awareness among stakeholders of outcomes of their actions (i.e., promote stakeholder learning)
<b>CHANGES TO INDICATOR</b>
<b>Change to Indicator:</b> None
<b>Other Notes:</b> None
<b>This sheet was last updated on: 7 May 2020, by <i>Together</i> COP, and was last reviewed &amp; approved on: _____, by: _____</b>



## Together Activity Indicator Reference Sheet

<b>Indicator No. &amp; Name: 3.4. Perception of "Sense of Belonging" among sample of focus community members</b>
<b>DO No. &amp; Name:</b> DO 1: Regional Institutions' Ability to Promote Sustainable and Inclusive Regional Growth Increased
<b>IR No. &amp; Name:</b> IR 1.3: Good Governance Strengthened
<b>Sub-IR No. &amp; Name:</b> Sub-IR 1.3.2: Increased Capacity of Civil Society and Private Citizens to Participate Effective in Public Decision Making
<b>No. &amp; Name of Activity(s):</b> 72048618CA00008, Together
<b>No. &amp; Name of Action(s)/Intervention(s):</b> Objective 3. Improve relations and constructive dialogue among citizens of different backgrounds
<b>Geographic Coverage:</b> Thailand
<b>Origin of indicator:</b> Current Foreign Assistance Framework ("F") indicator ____ No. _____, for reporting year(s) 2020-2022, program area/element/sub-element _____; Existing PMP Indicator ____ No. _____; Existing IR/Project Indicator ____ No. _____; USAID Global/Regional Indicator ____ (specify _____); Other (specify): Custom Outcome
<b>Is this indicator subject to a data quality assessment (DQA) by USAID?</b> Yes ___ No ___
<b>DESCRIPTION</b>
<p><b>Indicator Definition:</b></p> <p>"Sense of Belonging" refers to a compound variable developed in the <i>Together</i> Community Governance and Drivers of Conflict Research Project. It captures the perceptions of respondents regarding the extent to which they feel that they (and other community members) share values, beliefs and culture.</p> <p>"Sample of focus community members" refers to a random sample of people in all project geographic locations during the period of <i>Together</i> implementation (e.g., all districts or provinces). The sample size is calculated from the total number of persons age 18-60 years in the location and provides a margin of error of +/- 7.5% at the 95% confidence interval. The sample is representative regarding the sex of respondents.</p> <p>The value of the compound variable "Sense of Belonging" is derived from responses to 3 survey questions</p> <p>14q. To what extent do you agree or disagree with the following statements? You can respond strongly agree, agree somewhat, disagree somewhat, or strongly disagree. I feel a sense of belonging towards the community in which I am now living.</p> <p>19b. Next, I would like to ask you some questions about conditions in the community in which you are now living. You can respond strongly agree, agree somewhat, disagree somewhat, or strongly disagree. Most of the people in this community share my values.</p> <p>19j. Next, I would like to ask you some questions about conditions in the community in which you are now living. You can respond strongly agree, agree somewhat, disagree somewhat, or strongly disagree. Most people in your community share similar values, beliefs, culture and tradition as yours.</p> <p>Survey data on the perceptions and opinions of community members will be collected in Chiang Mai, Khon Kaen, Yala, Pattani and Narathiwat at the outset (March 2019), middle (about June 2020) and end of the Activity (about July 2022). An increase in the value of the variable over time indicates positive progress (increased perception of consensus orientation in making decisions). <i>Together</i> will collect data and calculate variable values in March 2019, about June 2020 and about July 2022. Findings will be compared to discern whether there has been a significant change in the variable over time.</p> <p><b>Additional background information on the Community Governance and Drivers of Conflict Research Project</b></p> <p>During November 2018 to January 2019, a research partnership comprising the USAID-funded <i>Together</i> Project (implemented by DAI Global, LLC), Maejo University, Khon Kaen University, Yala Rajabhat University, Prince of Songkla University–Pattani Campus and Princess of Naradhiwas University (here after the "research team") designed a mixed methods research project to explore issues of governance, social cohesion and conflict in the North, Northeast and Deep South regions of Thailand. The results of the study will be used in designing activities to strengthen citizen-government engagement and support community-community interaction and to assess the impact of these interventions. The research project includes a quantitative survey of a representative sample of residents in select provinces and interviews of a purposive</p>

## Together Activity Indicator Reference Sheet

sample of key actors and influential persons who are well-placed to provide personal insights and share experiences on issues of governance, social cohesion and conflict in the study area.

The objective of this research is to provide a better and more nuanced understanding of community governance and social cohesion issues, drivers of conflict and the pathways through which individuals become vulnerable to and involved with destructive or violent actions.

This objective will be achieved through a mixed methods research approach with qualitative and quantitative components. The first step in the research design process was to compile a list of key factors that underpin strong governance and social cohesion, and those assumed to be drivers of conflict. The research team did this through a close review of available research literature, consultation with experts on governance and conflict in Thailand, and discussions with academics, government officials and civil society leaders in the research area. To understand how the drivers of conflict form pathways to extreme actions, detailed case studies will be conducted through semi-structured interviews of people who have been personally involved in destructive or violent actions, members of their families or close friends, and people who have actively encouraged and influenced others to commit such actions.

The research also includes a quantitative survey of perceptions to enable a test of prevailing assumptions about the drivers of conflict, and to identify risk factors and define at-risk populations in the research area. The research team will collect a stratified random sample of 1,980 persons age 18 to 60 years from 11 provinces spread across the North, Northeast and Deep South regions of Thailand. The perceptions survey and case study interviews, and analysis of resulting data, will be conducted over a period of about three months, during March to May 2019.

The methodology proposed for this research project builds directly on the method developed and employed by Casey and Pottebaum in the Philippines (Casey, Kevin and David Pottebaum. Youth and Violent Extremism in Mindanao, Philippines: A Mixed-Methods Design for Testing Assumptions about Drivers of Extremism. DAI Global, LLC, Bethesda, Maryland, USA, August 2018. <https://www.dai.com/uploads/Youth%20and%20Violent%20Extremism%20in%20Mindanao,%20Philippines.pdf>). As they indicate in their paper, the field of development-based conflict and extremism research is very much in its infancy. Recent efforts by Hedayah and USIP's RESOLVE have provided a needed focus on methodology in the field (RESOLVE Network. Building Consensus and Setting Priorities for Research on Violent Extremism: Working Paper on Findings from Expert Consultations. United States Institute of Peace, September 2016). While these and other efforts have improved methodologies recently, there remains an overreliance on secondary sources and a lack of empirical data that can be used in statistical and inferential analyses. As a result, there remain many untested assumptions, particularly regarding factors driving conflict and extremism.

Casey and Pottebaum describe two gaps in the methodology that they suggest are filled by their mixed-methods approach. First is a lack of qualitative research focusing on the experience of extremists themselves. This results in a lack of clear understanding of the process of radicalization and of how extremists experience the drivers of conflict themselves. Research needs to be more grounded in the experiences of extremists to properly understand the dynamics of radicalization. The second gap highlighted by Casey and Pottebaum is the absence of inferential statistics and quantitative studies that can reveal how assumed drivers of conflict and extremism interact and correlate with social, political and economic factors. Quantitative studies tend to take the form of public opinion polling and include no effort to explore underlying relationships that may shape opinion.

This research project will build on the work of Casey and Pottebaum in two ways. First, it will replicate the method (adapted for the local context) in the similar, violence- and conflict-affected environment of the Deep South. This will test the efficacy of this methodology in a different geographic area with a different demographic group. Second, this research will expand use of the methodology to an environment characterized by tension and latent conflict (North and Northeast Thailand), where subjects of study are not extremists and extremist organizations, but rather persons and groups involved in destructive or violent acts during periods of heightened unrest. No examples could be found of significant research on this topic in these regions, indicating a void of tested methodological approaches in this regard.

At the outset of the design phase, the research team conducted a lengthy review of relevant literature to better understand the drivers of conflict and factors relevant to community governance and social cohesion in Thailand. Much of the literature and research to date can be characterized as general situational analyses and political-social assessments. Most studies relied on secondary data and interviews of a few key informants. Only a handful included survey data from local populations. The literature predominantly focuses on the conflict in the Deep South, with little available on the North and Northeast. Research conducted by The

## Together Activity Indicator Reference Sheet

Asia Foundation, Engvall and Vajirakachorn are noteworthy, adding much to the base of knowledge and provided a foundation for future studies, including the study presented here (Burke, Adam and Pauline Tweedie. *The Contested Corners of Asia: The Case of Southern Thailand*. The Asia Foundation, 2013. Engvall, Anders. *Trust and Conflict in Southern Thailand*. No Date. [https://editorialexpress.com/cgi-bin/conference/download.cgi?db\\_name=SERC2011&paper\\_id=234](https://editorialexpress.com/cgi-bin/conference/download.cgi?db_name=SERC2011&paper_id=234). Engvall, Anders and Magnus Andersson. *The Dynamics of Conflict in Southern Thailand*. *Asian Economic Papers*, Fall 2014, Volume 13, No 3, pp 169-189. Vajirakachorn, Surasit. *Social Inclusion in Southern Border Provinces of Thailand*. *International Journal of Social Quality*, Winter 2012, Vol. 2, Issue 2, pp 63-80).

### Study Outputs

The specific outputs of the research project include:

1. Identified and tested assumptions regarding the drivers of conflict.
2. Deeper understanding of key factors related to community governance and social cohesion.
3. Clarity on risk factors for destructive and violent actions and of geographic areas and demographic groups that are most vulnerable to being influenced to commit extreme acts.
4. An understanding of messages used to build support and influence people to commit extreme acts, and the channels of communication that they use.

### Methodology

This is a mixed methods study comprising two components: pathways case studies and a perceptions survey.

#### *Pathways Case Studies*

A hallmark of case study research is the use of multiple data sources, a feature which enhances data credibility. Case studies will be constructed from both primary and secondary data sources. A review of literature and discussion among research team members from the research locations led to initial themes and concepts that will guide interviews and revealed cases and events that will be explored during the field interviews. Interviews will be conducted with individuals (“Actors”) with direct experience with destructive and violent acts to better understand their assumptions around pathways and drivers of extremism. Interviews will also be conducted with persons who influenced or recruited others to participate in extreme acts (“Influencers”).

Primary data collection will be done through semi-structured interviews with Actors and their family members, friends and other associates, and with Influencers. Interview data will be used to build detailed case studies of pathways to extreme action and of communication methods and messages used to influence and recruit people to commit extreme acts. Interview respondents will be classified in two groups depending on their knowledge of and proximity to primary subjects. Primary respondents include actual Actors or Influencers. Secondary respondents are friends, family members or associates of Actors (case studies of Influencers will not include interviews with secondary respondents as these are not necessary to understand communication methods and messages). Case studies of Actors will aim to use at least three different respondents per case study to increase the validity of the findings.

Sampling for interviews will be conducted through a snowball sampling methodology. Initial interviews will be conducted with either primary or secondary respondents, depending upon the circumstances and researcher knowledge of the individuals involved. During interviews, researchers will ask respondents for names of other persons they might interview who have special knowledge on the topic. This sampling technique will be continued until enough cases are identified and sufficient interviews are conducted to write coherent and complete case studies. A total of 40 Actor case studies and 10 Influencer case studies will be conducted, including sixteen Actors and four of Influencers in the North Region and in the Northeast Region, and eight Actors and two influencers in the Deep South.

Interviews will be semi-structured, following a basic interview guide. Interviewers will ask follow-up questions and probe for clarification or for additional details. Detailed notes will be compiled immediately following each interview. When possible, interviews will be conducted by a lead interviewer assisted by a note taker.

#### *Perceptions Survey*

The quantitative component of the research project is a survey that explores perceptions and issues of governance, social cohesion and drivers of conflict in three regions of Thailand. The survey will help clarify

## Together Activity Indicator Reference Sheet

and deepen understanding of factors that leave people vulnerable to being influenced to commit destructive or violent actions, and to test prevailing assumptions about the drivers of conflict. It will define more precisely the at-risk populations that *Together* might work with in future activities, in collaboration with Royal Thai Government agencies and local civil society organizations. The survey will be completed using face-to-face interviews of people age 18 to 60 years in eleven provinces following a standard set of questions. The questions help define and provide quantitative measures of the abstract drivers and factors of interest in this study. Care will be taken to ensure that the group of respondents includes representation from youth, women and other marginalized groups, as appropriate.

Research location. The research area includes the North, Northeast and Deep South regions of Thailand. Considering population size, recent history regarding key events related to this study, and locations of research partner universities, the research area in the North was narrowed to the standard government local regions of Upper North 1 and Central Northeast, each comprising four provinces. Comprising just three provinces, it was not necessary to reduce the scope of the research area in the Deep South region. This provides a total of eleven provinces in the research area.

The literature review and expert opinion suggest that the population size of a given area might influence perceptions and the relative importance of drivers of conflict. Thus, districts for surveying within each province were purposively selected to include two with “more population” and two with “less population”. This was accomplished by ordering all districts in a province by population size (age 18 to 60 years), then splitting the districts into two groups – half of the total districts with greater population, and half of the population with less population. For example, consider a province with ten districts. The districts are ordered 1 through 10 by population size. The five districts with the greatest population are placed in one group, the other five with less population are placed in another group. A total of four districts are then randomly selected from each province, including two with greater population and two with smaller population. Following this approach, two sub-districts were selected randomly from the list of all sub-districts in each district (without consideration of population size, which was not relevant at this geographic level).

In each sub-district, a form of systematic random sampling of villages to survey will be used that is most appropriate to the context. In areas where 30 or fewer persons are to be surveyed, these persons will be selected randomly from one village. Where more than 30 persons are to be surveyed, the sample will be drawn from two villages selected randomly from within the sub-district.

Sample size. The eleven provinces in the research area provide the level of analysis for the survey (primary sampling unit). This will enable comparison of findings across provinces and regions. The target respondent sample size for each province was calculated based on a confidence interval of 95% and margin of error of +/- 7.5%. To ensure the minimum sample size is met, the number of interviews conducted is increased by 5% above the amount required to allow for the discarding of inaccurate or incomplete forms (note that the sample sizes indicated in Table 2 below include the additional 5% sample). Thus, a total of 1,980 persons will be surveyed (180 persons in each province).

Respondent Selection. Within each village, survey teams will select individuals to participate in the survey following a standard random process. Research teams will meet with relevant local government authorities to obtain census lists of persons residing in each selected village. The persons on these lists will be numbered sequentially, and a random number generator will then be used to randomly select persons from the list for interviewing. The number of persons randomly selected from the master list will be greater than the number required by the study to ensure adequate names (persons) have been shortlisted in case one or more persons on the shortlist are not available or choose not to participate in the survey interview.

### Design Limitations

The research team designed the research approach and tools with a goal of reducing the impact of standard biases encountered in social science research. Interviews with a broad array of individuals and a review of current literature were used to develop a comprehensive list of governance and social cohesion factors and drivers of conflict in Thailand most frequently highlighted by experts and discussed in the literature. The factors and drivers were not evaluated or ranked but were all taken as assumptions which would be tested equally through the research process. This reduced any potential confirmation bias on the part of the research team.

Research tools were structured to reduce common biases that arise from poor design. Leading or double-barreled questions were not used, questionnaires were structured to allow for rapport building before sensitive questions were broached, some questions were reverse coded and others were phrased using neutral language to reduce common response biases. All materials were introduced to research team

## Together Activity Indicator Reference Sheet

members and orientation in their use provided in native languages before administration, reducing chances for spontaneous translation errors. [The research team determined that all research documents (tools) were to be written in Thai Language, with orientation/training discussions in each region using local languages and dialects as appropriate. Interviews of respondents were conducted in either Thai or local language, depending upon the needs of the person interviewed.]

In addition, a random sampling plan was designed to draw as representative a sample as possible given project constraints. Random respondent selection and population quotas guard against selection biases.

Standard practices were followed to ensure the quality of the survey questionnaire. The validity of the questionnaire – the extent to which it measures what it is intended to measure – was established using face validity. The research team consulted a DAI expert on research regarding conflict and violence to discuss and confirm the validity of the factors and associated questions. In addition, the questionnaire to be used in this research project is largely based on and adapted to the Thai context from a similar survey used successfully and which yielded strong results in two separate cases across various demographic groups in the Philippines in 2017 and 2018 (which, in turn, was based on a survey used successfully in Thailand in 2012 under the Sapan Project). This provides assurance that the content of the survey instrument – the questions and variables – represent the domain of factors relevant to this study. Importantly, the questionnaire was constructed and tested through a methodical process by research team members who themselves are experts on the subject matter and are from and work in the various research locations.

Prior to implementing the full survey, the research team pilot tested the questionnaire in each region covered by the research project. A minimum of 20 persons were surveyed in each province, for a total pilot test of 220 persons. This highlighted unclear content and language issues and facilitated the review of the appropriateness and flow of the questions throughout the survey instrument.

Data from the pilot test was used to check the consistency of responses and thus the accuracy in implementing the tool (i.e., Enumerator skill in asking questions and ensuring respondent understanding of questions and response options). The questionnaire includes some negatively phrased questions; responses to these questions were reverse coded and compared for consistency with responses to similar positively phrased questions.

Following the review of pilot test results, the research team revised the questionnaire accordingly and briefed the Enumerators to all changes in content and approach.

The reliability of the questionnaire is also critical and will be tested by the research team following collection of final survey data. While reliability typically refers to the degree to which the results of a survey or measurement can be replicated across time – something not fully applicable for a survey of perceptions that can, and often do, change over time – it also addresses the aspect of the internal consistency of the questionnaire. That is, the extent to which the questions are measuring the same thing. Internal consistency will be estimated using Cronbach's alpha index (note that Cronbach's alpha index was used to measure the consistency of the questionnaire in the Philippines context on two occasions and no problems were found). Should the index score highlight weaknesses in internal consistency of the questionnaire, standard procedures will be followed to assess and, if needed, remove problematic questions (those not correlated closely with others) step-wise until acceptable reliability is obtained.

### Confidentiality and Informed Consent

*Together* and the University partners will implement strict measures to ensure respondent confidentiality. At the time of survey and interviews, respondents will be given a unique number and all documents associated with that respondent will use only the respondent number for identification. If names of specific individuals are discussed in a case study interview and end up in transcripts, names will immediately be redacted and replaced with a pseudonym or a number. As the case studies will have detailed personal information such that deductive disclosure is a concern, full case studies will not be shared with persons outside the research team or published publicly. Anonymous quotes and details can be used in the final report as the danger of deductive disclosure is minimal. Informed consent shall be obtained orally from each participant and participants will be given the option of not participating in the study as part of the informed consent process.

Do no harm. The research team designed the questionnaire and implementation approach using best practices for surveys in conflict areas and which cover sensitive issues. The pilot test confirmed that no questions were too sensitive or stressful for respondents, and that none would compromise their safety. Data will be collected by Enumerators who are from the research locations, who speak local languages and are closely familiar with the local context, helping to ease any anxieties that respondents may feel when

## Together Activity Indicator Reference Sheet

discussing sensitive issues. Enumerators will be trained to observe for respondent discomfort, pain or anxiety, or if traumatic memories and emotions are stirred during the interview and stop the interview if such conditions arise. The security of respondents and research staff is paramount. Survey tasks will not be conducted in areas known to be dangerous, interviews will be stopped and rescheduled or cancelled if security becomes tenuous during implementation.

### Data Quality Control, Processing and Analysis

Data quality begins with sound questionnaires and interview guidelines, and proper training of staff who will collect data in the field. The research team conducted separate training courses for Enumerators who will implement the perceptions survey, and for Interviewers who will complete the case studies. This ensures that this staff understand the overall research project and its objectives, their roles and responsibilities in collecting field data.

During the field survey, Field Supervisors will be present to assist the Enumerators to address problems that might arise and to observe the conduct of the survey to ensure consistency in approach and application of the survey instrument. Field Supervisors will directly observe a minimum of 10% of the survey interviews conducted in their designated research area to ensure all survey standard approaches are being followed as required.

As surveys are completed, the Field Supervisors and Survey Research Managers will review all data capture forms to ensure they were completed accurately, following guidelines presented in the Questionnaire Instructions document. Following their review, university partners will send all forms to Khon Kaen University for processing and statistical analysis tasks. Having a central location for these tasks ensures consistency in approach regarding the acceptance or rejection of data collected in each province, efficient data entry and application of standard and appropriate statistical analysis techniques.

Prior to data entry, research staff at Khon Kaen University will review all survey forms to ensure they are complete and readable. Forms missing data on respondent location or age, or with errors on 5 or more questions will be rejected (e.g., questions having none or more than two responses). A Survey Research Manager will oversee entry of survey data into the survey database. A minimum of 10% of each Data Entry Clerk's work will be double-entered and assessed to detect and minimize data entry errors. Khon Kaen University-based research team members will complete all statistical analysis tasks, in close coordination with *Together* and the other partner universities.

Initial survey data analysis will focus on: (1) the identification and testing of assumptions regarding the drivers of conflict, and (2) understanding key issues related to governance and social cohesion in the research area. Regression analysis using composite indices for each of the assumed drivers will help identify factors associated with support for extreme action or ideas. For the second output, descriptive statistics and simple correlations and significance tests will be used to explore the data. The analysis will compare results across locations, sex, religion, and age cohort, as appropriate, to identify key findings that can inform targeted programming.

Analysis of case study data will proceed through two phases: building case studies and comparative analysis. As interviews are completed, case studies will be written based on primary and secondary interviews. Individual case studies will be 3-4 pages in length and include all pertinent details discovered data collection.

After the case studies are completed, comparative analysis will be conducted to describe the most common pathways to destructive or violent actions, identify common themes and highlight significant differences in the identified pathways. Case studies will be coded based on a coding matrix developed by the research group. Significant similarities and differences across different pathways will be identified and explored, and the most common pathways will be described in detail.

As the final step in the analysis of data, the research team will integrate the qualitative findings with those of the quantitative survey to help uncover or highlight causality between drivers of conflict and the destructive or extreme actions and extreme ideas. That is, the findings will not just rely on the results of regression analysis, but rather they will pull together those results with the studies of personal life experiences of the Actors interviewed to see how the factors "work" beyond just the correlations data.

**Unit of Measurement:** Compound variable

**Disaggregation(s):** Sex (male and female)

**Data Collection:** Survey using standard approach and tools

## Together Activity Indicator Reference Sheet

<b>Data Source(s):</b> Individual perception survey
<b>Reporting Frequency:</b> Data will be reported to USAID on/about June 2019 (baseline), October 2020, and September 2022 (beginning, middle and end of Activity)
<b>DATA QUALITY</b>
<b>Date of Previous Data Quality Assessment &amp; Review:</b> None (new Activity and Indicator)
<b>Date of the Next Data Quality Assessment:</b> October 2020
<b>PLAN FOR DATA USE</b>
<b>Known Data Limitations:</b> There are no known data limitations
<b>Plan for Data Use:</b> Reporting; review of Activity strategy, approach and actions; raising awareness among stakeholders of outcomes of their actions (i.e., promote stakeholder learning)
<b>CHANGES TO INDICATOR</b>
<b>Change to Indicator:</b> None
<b>Other Notes:</b> None
<b>This sheet was last updated on: 7 May 2020, by Together COP, and was last reviewed &amp; approved on: _____, by: _____</b>

## APPENDIX 4

**Together Activity Perception Survey - Compound Variable Baseline Values\***

ID	Province	1.1. Consensus Orientation	1.2. Participation	3.1. Community Marginalization & Discrimination	3.2. Self Efficacy	3.3. Sense of Belonging	3.4. Responsible for Common Good
1	Pattani	0.553	0.614	0.688	0.818	0.847	0.788
2	Yala	0.551	0.576	0.666	0.760	0.799	0.769
3	Narathiwat	0.528	0.615	0.637	0.749	0.747	0.783
4	Khon Kaen	0.553	0.656	0.708	0.801	0.826	0.814
5	Roi-et	0.572	0.654	0.738	0.825	0.881	0.864
6	Kalasin	0.572	0.644	0.737	0.815	0.886	0.835
7	Maharakham	0.559	0.661	0.743	0.821	0.854	0.820
8	Chiang Mai	0.546	0.618	0.691	0.771	0.775	0.791
9	Mae Hong Son	0.556	0.630	0.685	0.755	0.807	0.772
10	Lumphun	0.561	0.664	0.711	0.808	0.818	0.814
11	Lampang	0.575	0.666	0.719	0.781	0.814	0.809
	All	0.557	0.637	0.703	0.791	0.823	0.806
	Deep South	0.544	0.601	0.661	0.774	0.797	0.780
	North	0.560	0.644	0.702	0.779	0.803	0.797
	Northeast	0.564	0.654	0.732	0.816	0.861	0.833

\* Together will finalize selection of an estimated 5 focus provinces in February 2020, following selection of RTG core partner agencies. Thus, not all provinces and associated data presented above will be used as indicator baseline values. In addition, based on the make-up and activities of final CSO and RTG core partners, the focus geographic area unit may be a district rather than a province. If a district is the final focus area unit, Together will implement a new survey using the standard CGDC Research tools to determine the requisite baseline value.