



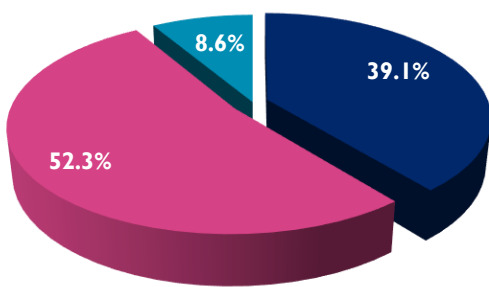
# Meghalaya | State Factsheet

## Key Indicators

Population	2.96 lakhs <sup>1</sup>
IMR	39 <sup>2</sup>
TFR	3.0 <sup>3</sup>
Under-Five Mortality	40 <sup>3</sup>

<sup>1</sup>Census, 2011; <sup>2</sup>SRS September, 2017; <sup>3</sup>NFHS 4, 2015-16

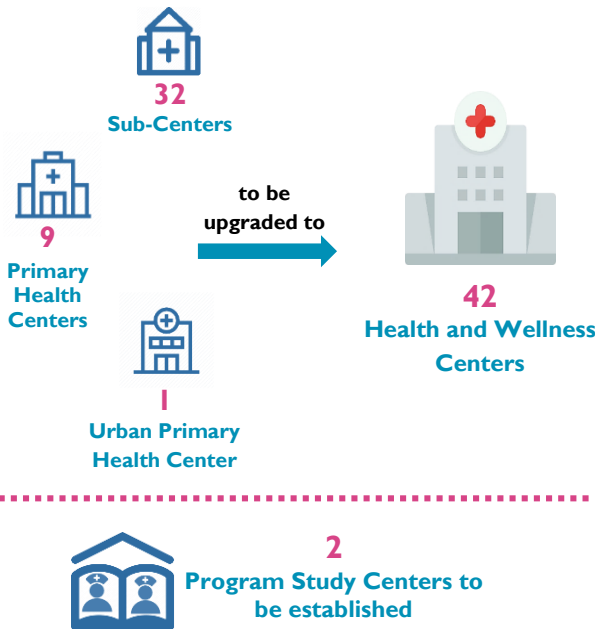
## Disease Burden in Meghalaya



- Communicable, maternal, neonatal and nutritional diseases
- Non-communicable diseases
- Injuries

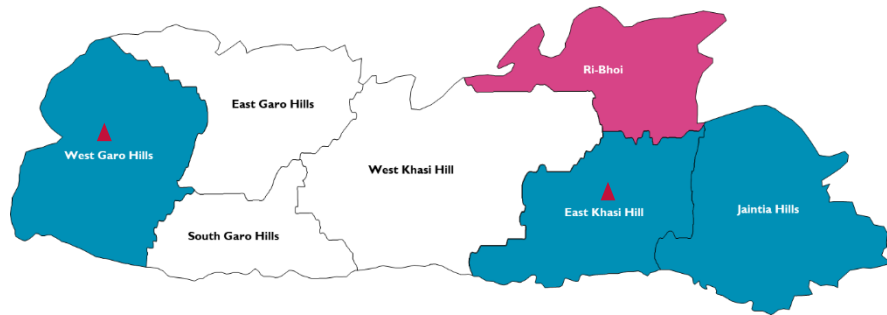
Source: India: Health of the Nation's States — The India State-Level Disease Burden Initiative, 2017; ICMR, PHFI, and IHME

## Plan for CPHC Delivery (FY 2018-19)



## Maternal and Child Survival Program

USAID's flagship Maternal and Child Survival Program (MCSP) led by Jhpiego, is providing technical assistance for strengthening the delivery of Comprehensive Primary Health Care (CPHC) services in five high focus states (Assam, Chhattisgarh, Jharkhand, Madhya Pradesh and Odisha) and six north-eastern states (Manipur, Meghalaya, Mizoram, Nagaland, Sikkim and Tripura).



- ▲ Program Study Centers (PSCs)
- MCSP intervention districts
- MCSP supported aspirational district

**Reach:**  
4 districts (all proposed HWCs)  
**PSCs: 2**  
TB Hospital, Tura  
Old ANM School, Shillong

## MCSP in Meghalaya

MCSP is providing technical assistance at the state level and in four districts, namely East Khasi Hills, West Garo Hills, Ri Bhoi and West Jaintia Hills, which include one aspirational district of Indian government.

**GOAL:** Creation of a network of 'Health and Wellness Centers' (HWCs) across intervention states for provision of Comprehensive Primary Health Care, thereby leading to universal health coverage.

**OBJECTIVE 1:** Assist the state in developing roadmaps, operational plans and financial proposals for operationalizing HWCs.

**OBJECTIVE 2:** Build the institutional capacity of the state to train mid-level providers in the six-month Certificate Course in Community Health.

**OBJECTIVE 3:** Demonstrate CPHC delivery in the intervention districts through establishment of HWCs.