



CHILD PROTECTION CASE MANAGEMENT FLOW CHART

DEFINITION OF MALTREATMENT

Maltreatments means all forms of physical and/or emotional ill-treatment, sexual abuse, neglect or negligent treatment or commercial or other exploitation, resulting in actual or potential harm to the child's health, survival, development of dignity in the context of a relationship of responsibility, trust or power.

INDICATORS FOR IDENTIFICATION AND REPORTING:

Sexual abuse: penetration, exposure to pornographic material, oral sex, suggestive behaviours or comments, penetration of the anus or vagina by fingers or objects, touching breasts or buttocks, encouraging a child to perform or acts on the perpetrator.

Deliberate neglect: deliberate deprivation by a parent and/or care giver of a child's most basic needs, such as food, shelter, warmth, clothing, care and protection; delay in seeking assistance for the child's health and/or medical needs, inattention of special educational needs, lack of adequate supervision.

Physical abuse: bruising/kicking/hitting with an object, skull fractures, shaken baby syndrome, cuts, broken bones

Emotional abuse: any act or omission by the parent and/or caregiver which results in impaired psychological and/or emotional functioning and/or development of a child or young person which may be expressed in a variety of ways such as anxiety, withdrawal, aggression, depression or delayed development.

Exploitation: including all forms of slavery or practices similar to slavery, including debt bondage or forced marriage; sexual exploitation; servitude; forced labour or services; child labour prohibited in terms of section 141 of the Act and the removal of body parts.

Commercial sexual exploitation: means the procurement of a child to perform sexual activities for financial or other reward, including acts of prostitution or pornography, irrespective of whether that reward is claimed by, payable to or shared with the procurer, the child, the parent or care-giver of the child, or any other person; or trafficking in a child for use in sexual activities, including prostitution or pornography.

Trafficking: in relation to a child, means the recruitment, sale, supply, transportation, transfer, harbouring or receipt of children, within or across the borders of the Republic by any means, including the use of threat, force or other forms of coercion, abduction, fraud, deception, abuse of power or the giving or receiving of payments or benefits to achieve the consent of a person having control of a child; due to a position of vulnerability, for the purpose of exploitation; and includes the adoption of a child facilitated or secured through illegal means.

A CASE OF CHILD ABUSE, NEGLECT AND EXPLOITATION IS IDENTIFIED AND REPORTED (s110)

PROCESS BASED ON CHILDREN'S ACT 38 OF 2005

A report or complaint is received

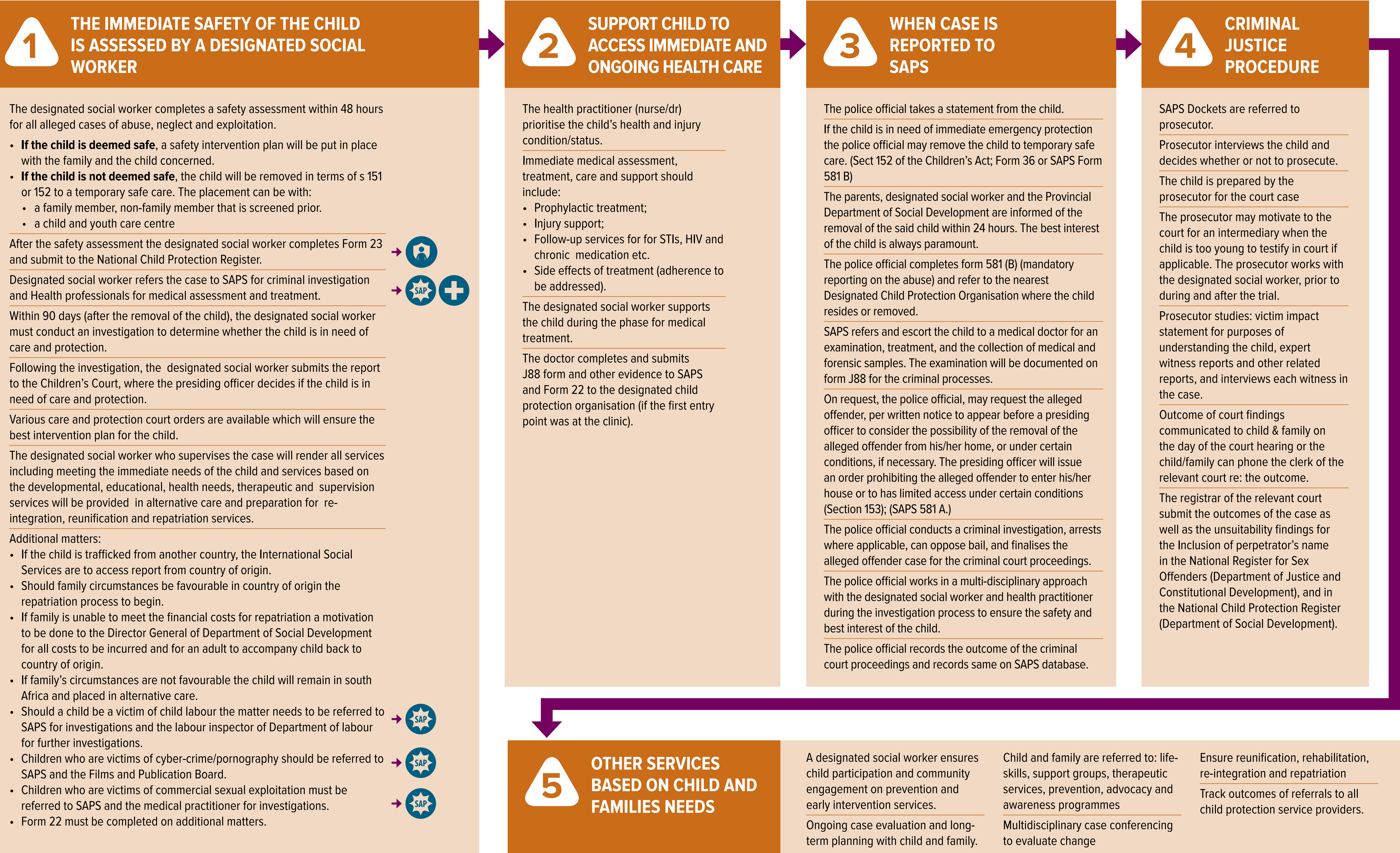
Entry-points for reporting include:

- Designated Child Protection Organisation (DSD office or Child Welfare Organization)
- Community organisation
- South African Police (SAPs)
- Faith-based Organisation
- Clinic/hospital
- Neighbour or any member of the public (Children's Act 38/2005, section 110)

A mandatory reporting individual completes Form 22

Mandatory reporting individuals must report the matter to a designated child protection organisation or the nearest police station. Form 22 is registered by the Provincial Head Office of Social Development onto the National Child Protection Register.

Supervisor assigns the case to a designated social worker (field worker).



Childline: 0800 05 55 55
 Gender base violence command centre: toll free 0800 428 428
 Trafficking Helpline: 0800 222 777



This work is supported by USAID and paid for by the American people.